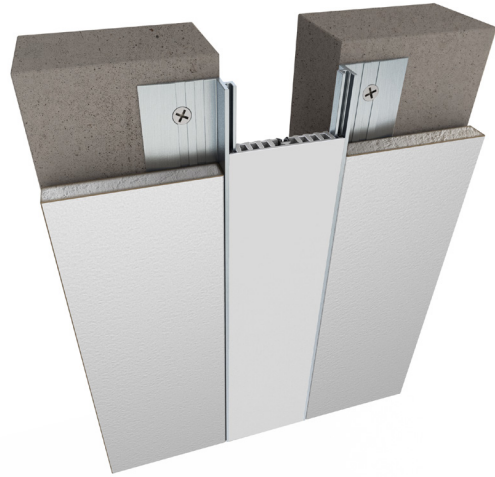


101 Series Recess Mount

A07 - Wall to Wall or Ceiling to Ceiling

A09 - Wall to Corner or Wall to Ceiling



Movement Rating ± 25%

Product Guide



Thermal



Interior



Fire Rated Option



Vapor Barrier Option

- ▶ Dual durometer seal provide secure fit and optimal flexibility
- ▶ Seals absorb limited serviceable seismic movement
- ▶ Recessed mount frames for minimal sightline
- ▶ Interior and exterior applications
- ▶ Adaptable to any 5/8" (16mm) wall and ceiling finishes including drywall, plaster and tile
- ▶ Snap-on design for easy on site assembly
- ▶ Easy to clean flush seals
- ▶ Low profile wall mounted frame optional for wall to corner (A09) condition, minimizes sightlines at corners.
- ▶ Mill finish aluminum
- ▶ Standard seal colors: black, beige, gray, off white and bright white. Custom colors available upon request.

Application	System	W		H1		H2		S		B		Movement +/-			
		Joint Width		Frame Height 1		Height 2		Sightline		Blockout		Horizontal		Vertical	
		US	mm	US	mm	US	mm	US	mm	US	mm	US	mm	US	mm
Wall/Wall Ceiling/Ceiling	101-A07-025	1"	25	3/4"	19	5/8"	16	1"	25	*	*	1/4"	6	1/4"	6
	101-A07-038	1 1/2"	38	3/4"	19	5/8"	16	1 7/16"	36	*	*	3/8"	10	3/8"	10
	101-A07-050	2"	51	3/4"	19	5/8"	16	1 7/8"	47	*	*	1/2"	13	1/2"	13
	101-A07-075	3"	76	3/4"	19	5/8"	16	2 7/8"	73	*	*	3/4"	19	3/4"	19
Wall/Corner Wall/Ceiling	101-A09-025	1"	25	3/4"	19	5/8"	16	1"	25	*	*	1/4"	6	1/4"	6
	101-A09-038	1 1/2"	38	3/4"	19	5/8"	16	1 7/16"	36	*	*	3/8"	10	3/8"	10
	101-A09-050	2"	51	3/4"	19	5/8"	16	1 7/8"	47	*	*	1/2"	13	1/2"	13
	101-A09-075	3"	76	3/4"	19	5/8"	16	2 7/8"	73	*	*	3/4"	19	3/4"	19

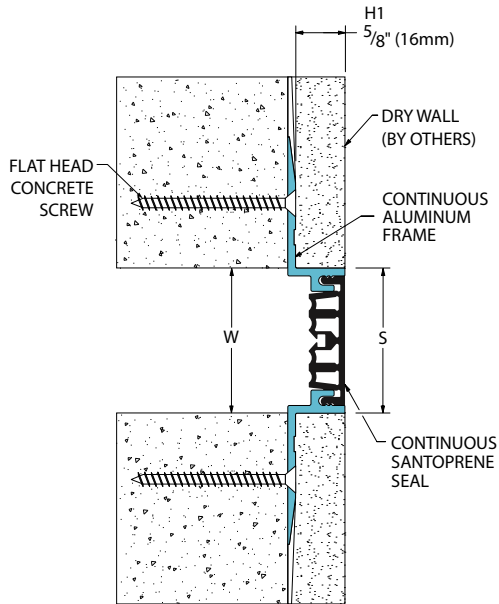
May be available in larger widths, please contact InPro Corporation for more details.

IPC.819/REV.12

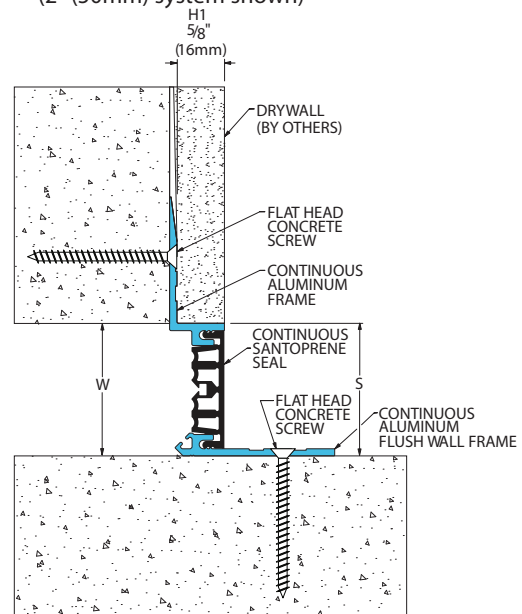
101 Series

Recessed Mount Wall and Ceiling Systems

101-A07 Wall/Wall Ceiling/Ceiling
(2" (50mm) system shown)

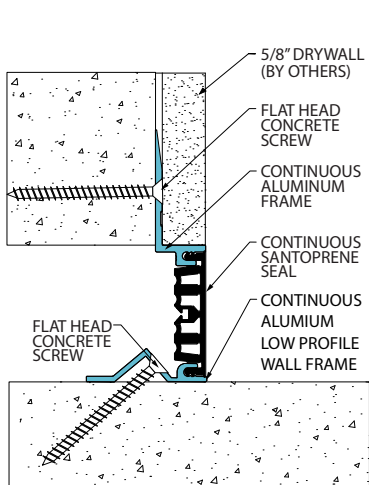


101-A09 Wall/Corner Wall/Ceiling
(2" (50mm) system shown)

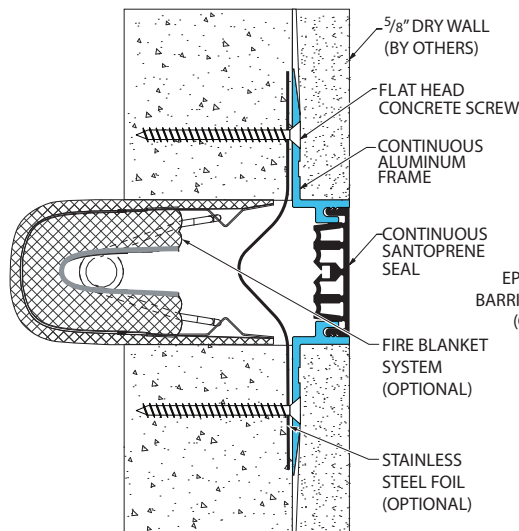


101 Series Options

Low Profile System
(101-A09-050LP system shown)



Fire Blanket System
(101-A07-050 system shown)



EPDM Vapor Barrier System
(101-A07-050 system shown)

