

114 Series

A07 - Wall to Wall or Ceiling to Ceiling

A09 - Wall to Corner or Wall to Ceiling



Movement Rating ± 50%

Product Guide



Thermal



Interior



Fire Rated
Option



Vapor Barrier
Option

- ▶ Designed for 5/8" (16mm) drywall installations
- ▶ Finish with plaster joint compound or wall covering
- ▶ Designed for a minimal sightline
- ▶ Bellows seal allows for 50% seismic movement
- ▶ Snap-fit design for easy on site assembly
- ▶ Standard seal colors: black, beige, gray, off white and bright white. Custom colors available upon request.

Application	System	W		H1		H2		S		B		Movement +/-			
		Joint Width		Frame Height 1		Height 2		Sightline		Blockout		Horizontal		Vertical	
		US	mm	US	mm	US	mm	US	mm	US	mm	US	mm	US	mm
Wall/Wall Ceiling/Ceiling	114-A07-050	2"	51	*	*	*	*	2 1/8"	54	*	*	1"	25	1"	25
	114-A07-075	3"	76	*	*	*	*	3 1/16"	78	*	*	1 1/2"	38	1 1/2"	38
	114-A07-100	4"	102	*	*	*	*	4 1/8"	105	*	*	2"	51	2"	51
	114-A09-125	5"	127	*	*	*	*	5 1/8"	130	*	*	2 1/2"	63	2 1/2"	63
	114-A07-150	6"	152	*	*	*	*	6 1/8"	156	*	*	3"	76	3"	76
Wall/Corner Wall/Ceiling	114-A09-050	2"	51	*	*	*	*	2"	51	*	*	1"	25	1"	25
	114-A09-075	3"	76	*	*	*	*	3"	76	*	*	1 1/2"	38	1 1/2"	38
	114-A09-100	4"	102	*	*	*	*	4"	102	*	*	2"	51	2"	51
	114-A09-125	5"	127	*	*	*	*	5"	127	*	*	2 1/2"	63	2 1/2"	63
	114-A09-150	6"	152	*	*	*	*	6"	152	*	*	3"	76	3"	76

IPC.905/REV.12

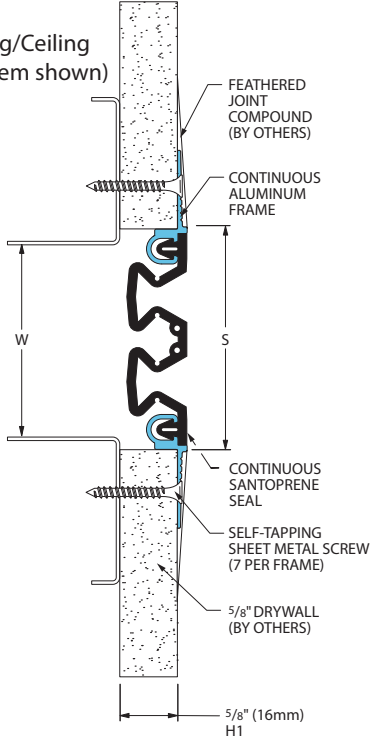
Inprocorp.com • 800.222.5556 • 262.679.9010
World Headquarters S80 W18766 Apollo Drive, Muskego, WI 53150 USA

JOINTMASTER®
EXPANSION JOINT SYSTEMS
A DIVISION OF INPRO®

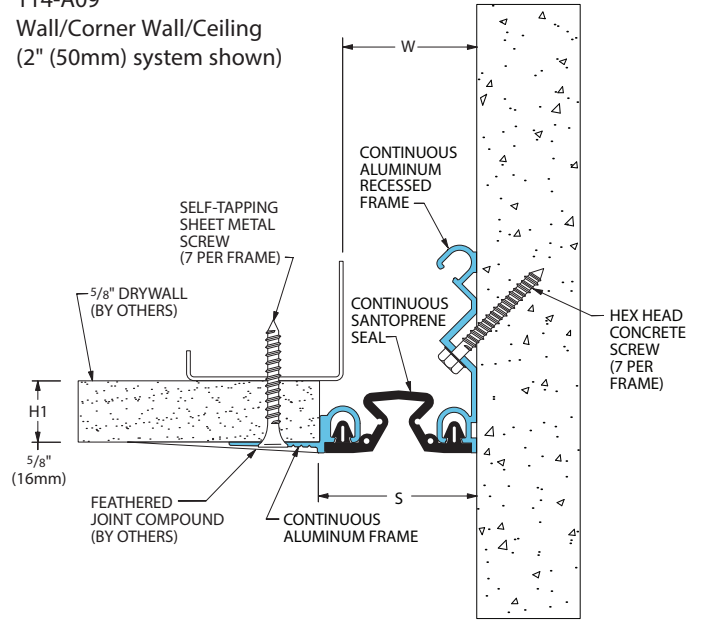
114 Series

Wall and Ceiling Systems

114-A07
Wall/Wall Ceiling/Ceiling
(3" (75mm) system shown)

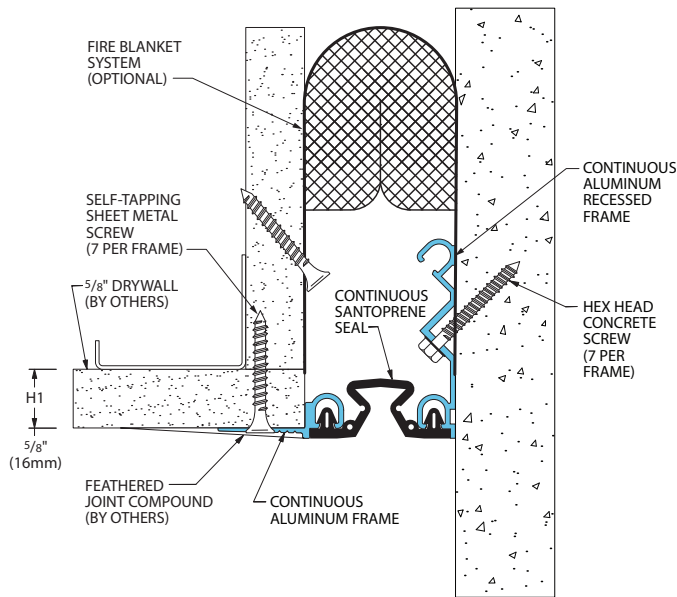


114-A09
Wall/Corner Wall/Ceiling
(2" (50mm) system shown)



114 Series Options

Fire Blanket System
(114-A09-050 system shown)



Vapor Barrier System
(114-A07-075 system shown)

