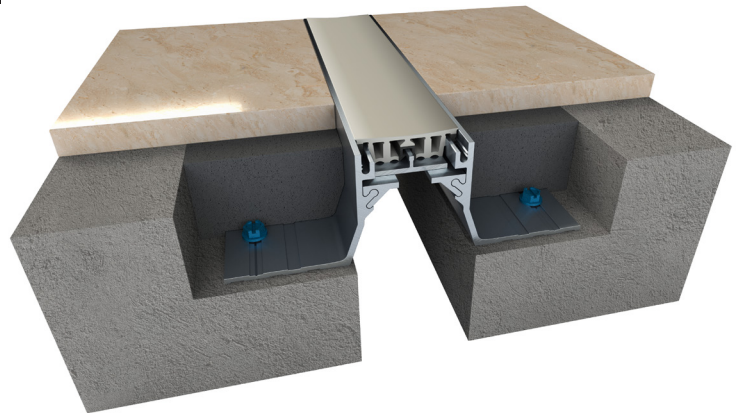


# 151 Series Recess Mount

A01 - Floor to Floor

A02 - Floor to Wall



**Movement Rating ± 25%**

## Product Guide



Thermal



Interior



Fire Rated Option



Vapor Barrier Option

- ▶ Dual durometer seal provides secure fit and optimal flexibility
- ▶ Adaptable to many finishes, including ceramic tile, marble, stone, vinyl tile and carpet
- ▶ Seamlessly integrates with the following wall and ceiling systems: 101,104,112,113,118 A07/A09
- ▶ Easy to clean flush seals. No dirt or water traps
- ▶ Snap-fit design for easy on site assembly

- ▶ Mill finish aluminum
- ▶ Standard seal colors: black, beige, gray, off white and bright white. Custom colors available upon request.
- ▶ Standard frame height: 2" (50mm)

Application	System	W		H1		H2		S		B		Movement +/-			
		Joint Width		Frame Height 1		Height 2		Sightline		Blockout		Horizontal		Vertical	
		US	mm	US	mm	US	mm	US	mm	US	mm	US	mm	US	mm
Floor to Floor	151-A01-025	1"	25	2"	50	*	*	1"	25	2 1/2"	64	1/4"	6	1/4"	6
	151-A01-038	1 1/2"	38	2"	50	*	*	1 7/16"	36	2 1/2"	64	3/8"	10	3/8"	10
	151-A01-050	2"	51	2"	50	*	*	1 7/8"	47	2 1/2"	64	1/2"	13	1/2"	13
	151-A01-075	3"	76	2"	50	*	*	2 7/8"	73	2 1/2"	64	3/4"	19	3/4"	19
Floor to Wall	151-A02-025	1"	25	2"	50	*	*	1"	25	2 1/2"	64	1/4"	6	1/4"	6
	151-A02-038	1 1/2"	38	2"	50	*	*	1 7/16"	36	2 1/2"	64	3/8"	10	3/8"	10
	151-A02-050	2"	51	2"	50	*	*	1 7/8"	47	2 1/2"	64	1/2"	13	1/2"	13
	151-A02-075	3"	76	2"	50	*	*	2 7/8"	73	2 1/2"	64	3/4"	19	3/4"	19

Standard frame height for recessed side 2" (50mm)

IPC.1819/REV.3

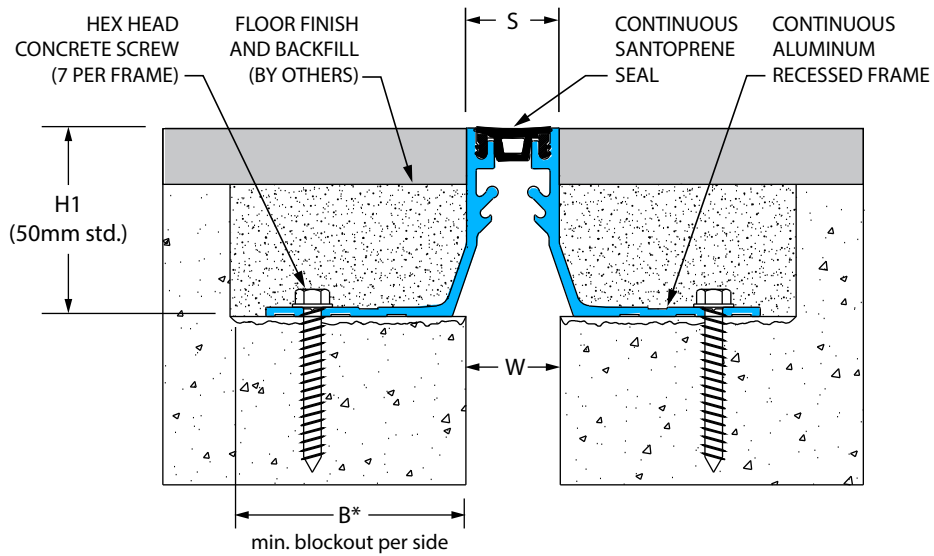
Inprocorp.com • 800.222.5556 • 262.679.9010  
 World Headquarters S80 W18766 Apollo Drive, Muskego, WI 53150 USA

**JOINTMASTER®**  
 EXPANSION JOINT SYSTEMS  
 A DIVISION OF INPRO®

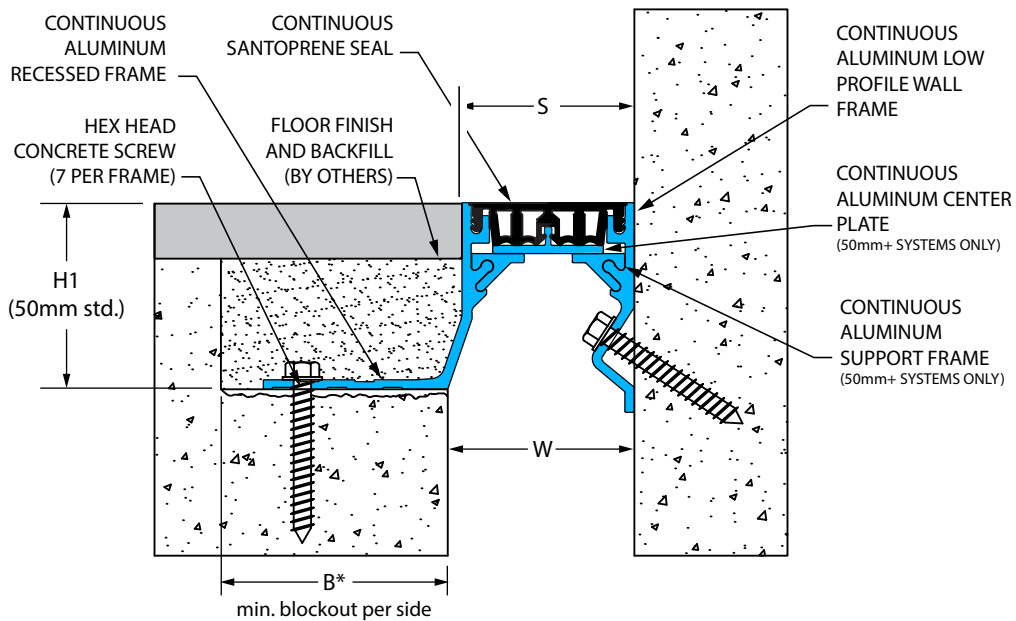
# 151 Series

## Recessed Mount Floor Systems

151-A01 Floor/Floor  
 (1" (25mm) system shown)



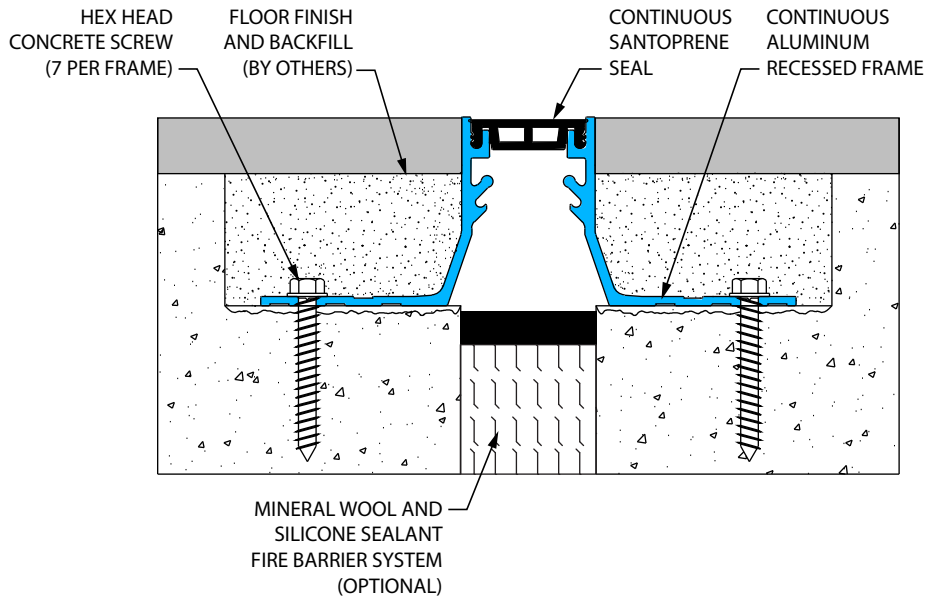
151-A02 Floor/Wall  
 (2" (50mm) system shown)



# 151 Series

## System Options

151-A01 Floor/Floor With Mineral Wool  
(1 1/2" (38mm) system shown)



151-A01 Floor/Floor With Vapor Barrier  
(2" (50mm) system shown)

