

223 Series

A07 -Wall to Wall

A09 - Wall to Corner



Movement Rating: Thermal

Product Guide



- ▶ Recessed mount frames for minimal sightline
- ▶ Dual durometer seal provides secure fit and optimal flexibility
- ▶ Center bar system ensures pan assembly is centered in joint at all times
- ▶ System seamlessly integrates with 223-A01/A02
- ▶ Designed for 5/8" (16mm) drywall installations
- ▶ Pan uses 3/8" (10mm) drywall to maintain wall finish through joint span
- ▶ Excellent thermal movement accommodations
- ▶ Standard seal colors: black, beige, gray, off white and bright white. Custom colors available upon request.

Application	System	W		H1		S		B		Movement +/-			
		Joint Width		Frame Height 1		Sightline		Blockout		Horizontal		Vertical	
		US	mm	US	mm	US	mm	US	mm	US	mm	US	mm
Wall to wall	223-A07-200	8"	200	5/8"	16	6"	150	*	*	2"	51	2"	51
	223-A07-250	10"	250	5/8"	16	6"	150	*	*	2"	51	2"	51
	223-A07-300	12"	300	5/8"	16	6"	150	*	*	2"	51	2"	51
	223-A07-350	14"	350	5/8"	16	6"	150	*	*	2"	51	2"	51
	223-A07-400	16"	400	5/8"	16	6"	150	*	*	2"	51	2"	51
Wall to Corner	223-A07-450	18"	450	5/8"	16	6"	150	*	*	2"	51	2"	51
	223-A09-200	8"	200	5/8"	16	3"	75	*	*	1"	25	1"	25
	223-A09-250	10"	250	5/8"	16	3"	75	*	*	1"	25	1"	25
	223-A09-300	12"	300	5/8"	16	3"	75	*	*	1"	25	1"	25
	223-A09-350	14"	350	5/8"	16	3"	75	*	*	1"	25	1"	25
	223-A09-400	16"	400	5/8"	16	3"	75	*	*	1"	25	1"	25
	223-A09-450	18"	450	5/8"	16	3"	75	*	*	1"	25	1"	25

Available in larger widths, please contact Inpro Corporation for more details.

IPC.1566/REV.4

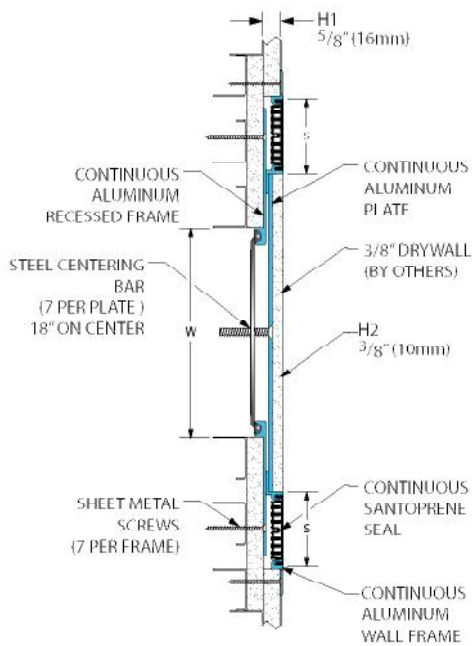
Inprocorp.com • 800.222.5556 • 262.679.9010
 World Headquarters S80 W18766 Apollo Drive, Muskego, WI 53150 USA

JOINTMASTER®
 EXPANSION JOINT SYSTEMS
 A DIVISION OF INPRO®

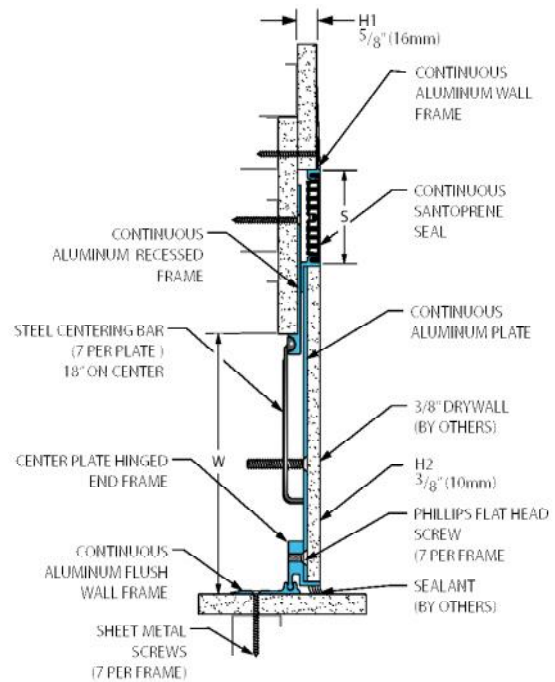
223 Series

Recessed Mount Floor and Wall Systems

223-A07 Wall/Wall
(8" (200mm) system shown)

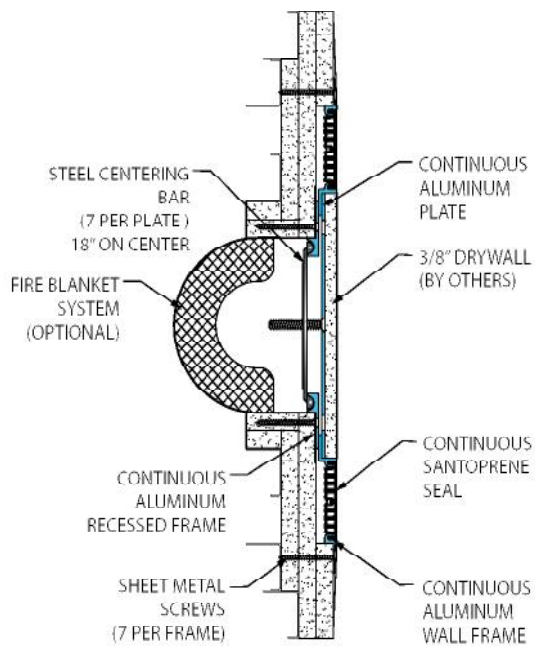


223-A07 Wall/Corner
(8" (200mm) system shown)



223 Series Options

Fire Barrier System
(8" (200mm) system shown)



Vapor Barrier System
(8" (200mm) system shown)

