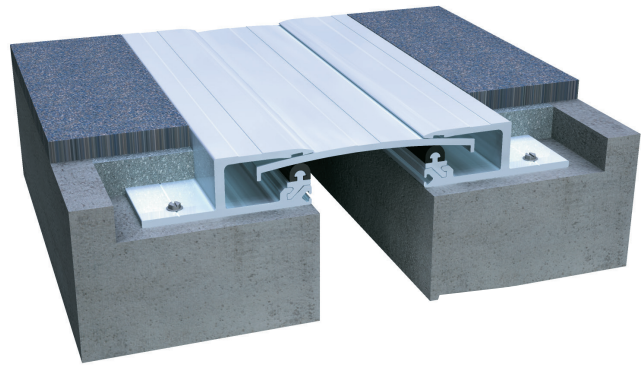


# 300 Series

A01 - Floor to Floor

A02 - Floor to Wall



**Movement Rating ± 50%**

## Product Guide



Interior



Seismic



Fire Rated  
Option



Vapor Barrier  
Option

- ▶ Patented “no-bump” configuration. ADA compliant. (Patent No. 5384996)
- ▶ Gasketed to eliminate transition rattle
- ▶ Standard load capabilities
- ▶ Recessed frame accommodates many floor finishes including concrete, terrazzo, tile, VCT and carpet
- ▶ ± 100% movement available on selected systems

Application	System	W		H1		H2		S		B		Movement +/-			
		Joint Width		Frame Height 1		Height 2		Sightline		Blockout		Horizontal		Vertical	
		US	mm	US	mm	US	mm	US	mm	US	mm	US	mm	US	mm
Floor to Floor	300-A01-025	1"	25	1"	25	*	*	3 1/4"	83	2 3/4"	70	1/2"	13	1/4"	6
	300-A01-050	2"	51	1"	25	*	*	5 1/4"	133	3 1/4"	83	1"	25	1/2"	13
	300-A01-075	3"	76	1"	25	*	*	7 1/8"	181	3 3/4"	95	1 1/2"	38	3/4"	19
	300-A01-100	4"	102	1"	25	*	*	9 1/8"	232	4 1/4"	108	2"	51	1"	25
	300-A01-150	6"	152	1"	25	*	*	13 1/8"	333	5 1/4"	133	3"	76	1 1/2"	38
Floor to Wall	300-A02-025	1"	25	1"	25	*	*	2 1/8"	5	2 3/4"	70	1/8"	3	1/8"	3
	300-A02-050	2"	51	1"	25	*	*	3 5/8"	92	3 1/4"	83	3/8"	10	1/4"	6
	300-A02-075	3"	76	1"	25	*	*	5"	127	3 3/4"	95	9/16"	14	3/8"	10
	300-A02-100	4"	102	1"	25	*	*	6 5/8"	168	4 1/4"	108	3/4"	19	1/2"	13
	300-A02-150	6"	152	1"	25	*	*	9 1/2"	241	5 1/4"	133	1 1/4"	31	3/4"	19

\*Contact your InPro Representative for loading capabilities

IPC.828/REV.11

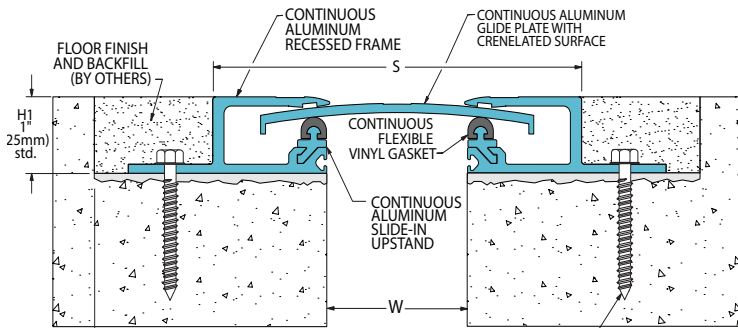
Inprocorp.com • 800.222.5556 • 262.679.9010  
World Headquarters S80 W18766 Apollo Drive, Muskego, WI 53150 USA

**JOINTMASTER®**  
EXPANSION JOINT SYSTEMS  
A DIVISION OF INPRO®

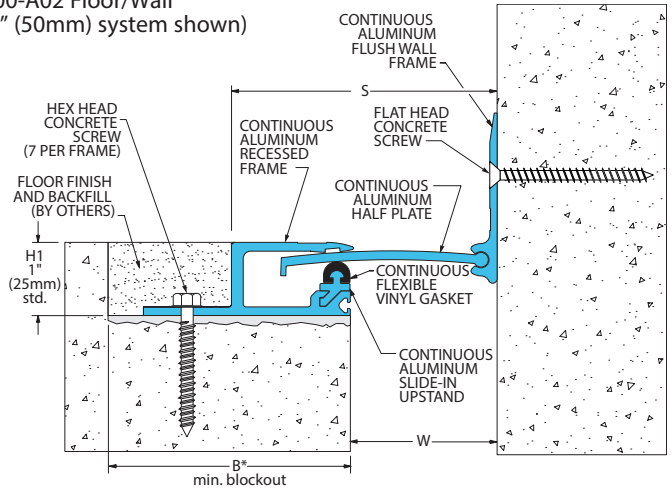
# 300 Series

## Glide Plate Seismic Floor Systems

300-A01 Floor/Floor  
(2" (50mm) system shown)

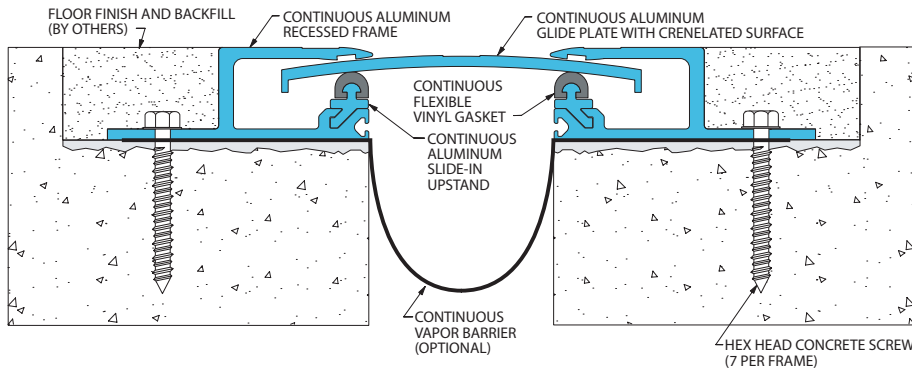


300-A02 Floor/Wall  
(2" (50mm) system shown)



## 300 Series Options

Vapor Barrier  
(300-A01-050 system shown)



Fire Blanket System  
(300-A01-050 system shown)

