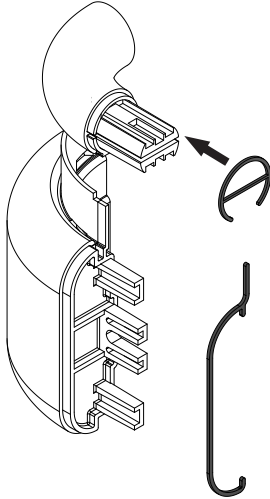


Installation Instructions

3110/3120 Handrail Reveal

FIG. 1



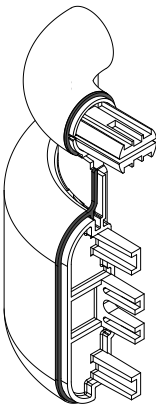
Please read all instructions before installing handrail.

Material must be stored, installed and used in environmentally controlled conditions.

1. Slip reveal over locator surface on Returns, Inside and Outside Corners. See Fig. 1 & 2.

NOTE: For 3120 reveal is only for G2-line base cover.

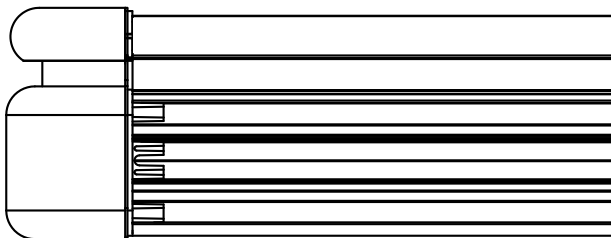
FIG. 2



2. Attach Returns and Corners to retainer, leaving 1/16" [2mm] gap between Return/Corner and retainer allowing for adjustment. See Fig. 3.

Note: Cut cover to length between the reveal pieces on the returns and/or corners.

FIG. 3



IPC.2151/REV.1