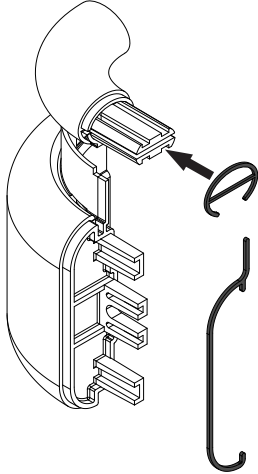


# Installation Instructions

## 3130/3140 Handrail Reveal

FIG. 1



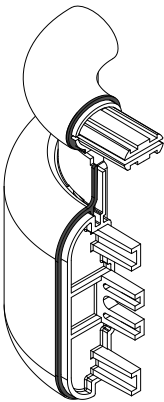
**Please read all instructions before installing handrail.**

**Material must be stored, installed and used in environmentally controlled conditions.**

1. Slip reveal over locator surface on Returns, Inside and Outside Corners. See Fig. 1 & 2.

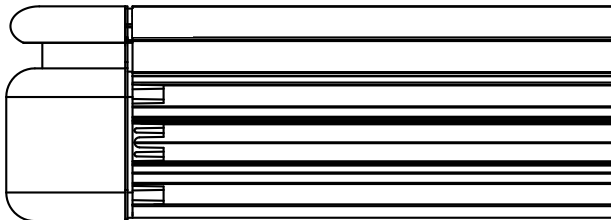
NOTE: For 3140 reveal is only for G2-line base cover.

FIG. 2



2. Attach Returns and Corners to retainer, leaving 1/16" [2mm] gap between Return/Corner and retainer allowing for adjustment. See Fig. 3.  
Note: Cut cover to length between the reveal pieces on the returns and/or corners.

FIG. 3



IPC.2172/REV.1