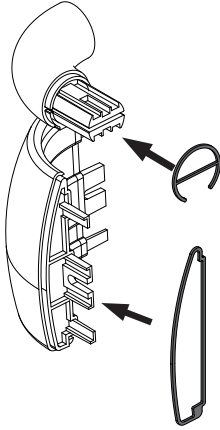


# Installation Instructions

3510/3520 HR Reveal

Please read all instructions before installing handrail.

FIG. 1



Material must be stored, installed and used in environmentally controlled conditions.

1. Slip reveal over locator surface on Returns, and Outside Corners. See Fig. 1 & 2. For Inside Corners. See Fig. 3 & 4.

NOTE: For 3520 system, reveal is only for the lower FV and G2 Wall Guard systems.

FIG. 2

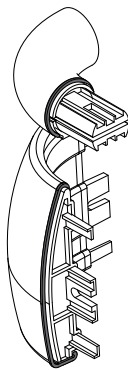


FIG. 3

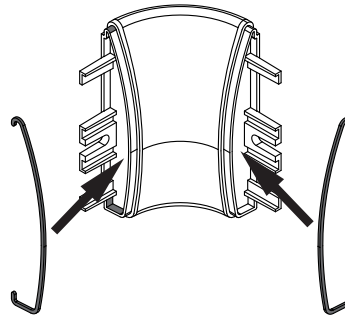


FIG. 4

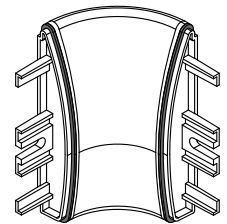
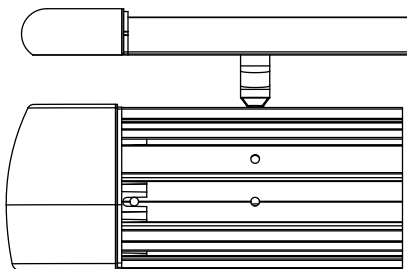


FIG. 5



2. Attach Returns and Corners to retainer, leaving 1/16" [2mm] gap between Return/Corner and retainer allowing for adjustment. See Fig. 3. Note: Cut cover to length between the reveal pieces on the returns and/or corners.

IPC.2274/REV.1