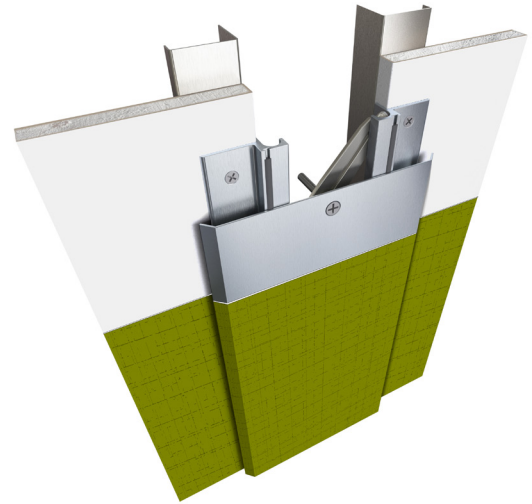


491 Series

A07 - Wall to Wall or Ceiling to Ceiling

A09 - Wall to Corner or Wall to Ceiling



Movement Rating ± 50%

Product Guide



Interior



Seismic



Fire Rated
Option



Vapor Barrier
Option

- ▶ Adaptable to many wall finishes including drywall and tile
- ▶ Clear anodized finish standard, cover plate can be primed, painted or wall papered to match adjacent wall finish
- ▶ System designed for renovation and surface mount installations
- ▶ Extra wide joint widths available
- ▶ ± 100% movement available on selected models
- ▶ Centering bar system constantly re-centers cover plate & allows for multi-directional seismic movement

Application	System	W		H1		H2		S		B		Movement +/-			
		Joint Width		Frame Height 1		Height 2		Sightline		Blockout		Horizontal		Vertical	
		US	mm	US	mm	US	mm	US	mm	US	mm	US	mm	US	mm
Wall/Wall Ceiling/Ceiling	491-A07-050	2"	51	5/8"	16	*	*	5 3/4"	146	*	*	9/16"	14	1"	25
	491-A07-075	3"	76	5/8"	16	*	*	6 3/4"	171	*	*	1 1/2"	38	1 1/2"	38
	491-A07-100	4"	102	5/8"	16	*	*	7 3/4"	197	*	*	2"	51	2"	51
	491-A07-150	6"	152	5/8"	16	*	*	9 3/4"	248	*	*	2 1/2"	64	3"	76
	491-A07-200	8"	203	5/8"	16	*	*	13"	330	*	*	4"	102	4"	102
	491-A07-300	12"	305	5/8"	16	*	*	19"	483	*	*	6"	152	6"	152
Wall/Corner Wall/Ceiling	491-A09-050	2"	51	5/8"	16	*	*	3 7/8"	98	*	*	1/2"	13	1/2"	13
	491-A09-075	3"	76	5/8"	16	*	*	4 7/8"	124	*	*	3/4"	19	3/4"	19
	491-A09-100	4"	102	5/8"	16	*	*	5 7/8"	149	*	*	1"	25	1"	25
	491-A09-150	6"	152	5/8"	16	*	*	7 7/8"	200	*	*	1 1/2"	38	1 1/2"	38
	491-A09-200	8"	203	5/8"	16	*	*	10 1/2"	267	*	*	2"	51	2"	51
	491-A09-300	12"	305	5/8"	16	*	*	15 1/2"	394	*	*	3"	76	3"	76

Available in larger widths, please contact InPro Corporation for more details.

IPC.941/REV.6

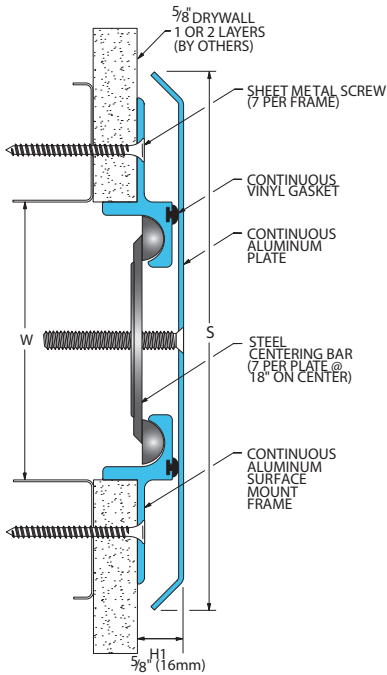
Inprocorp.com • 800.222.5556 • 262.679.9010
World Headquarters S80 W18766 Apollo Drive, Muskego, WI 53150 USA

JOINTMASTER®
EXPANSION JOINT SYSTEMS
A DIVISION OF INPRO®

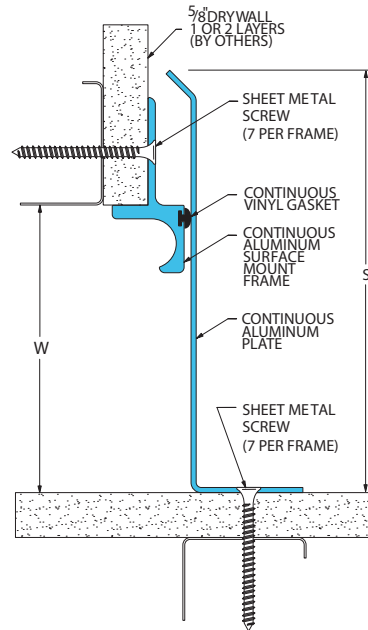
491 Series

Wall and Ceiling Systems

491-A07 Wall/Wall, Ceiling/Ceiling
(4" (100mm) system shown)

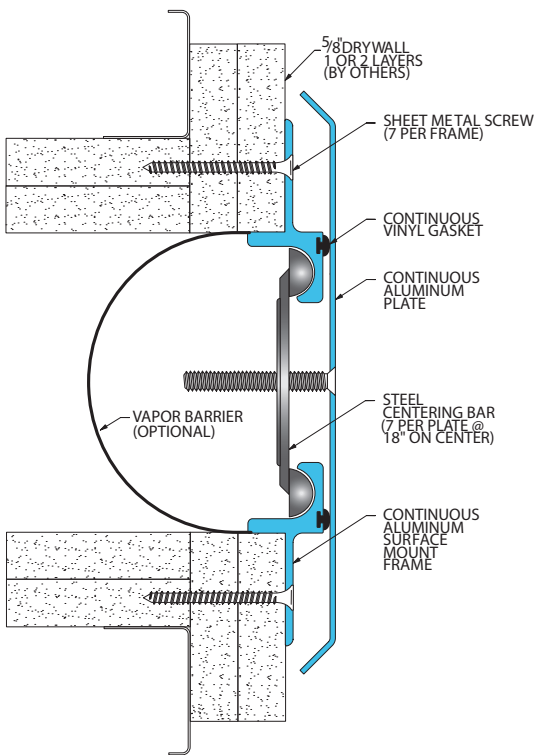


491-A09 Wall/Corner, Wall/Ceiling
(4" (100mm) system shown)



491 Series Options

Vapor Barrier System
(491-A07-100 system shown)



Fire Blanket System
(491-A07-100 system shown)

