

# Installation Instructions

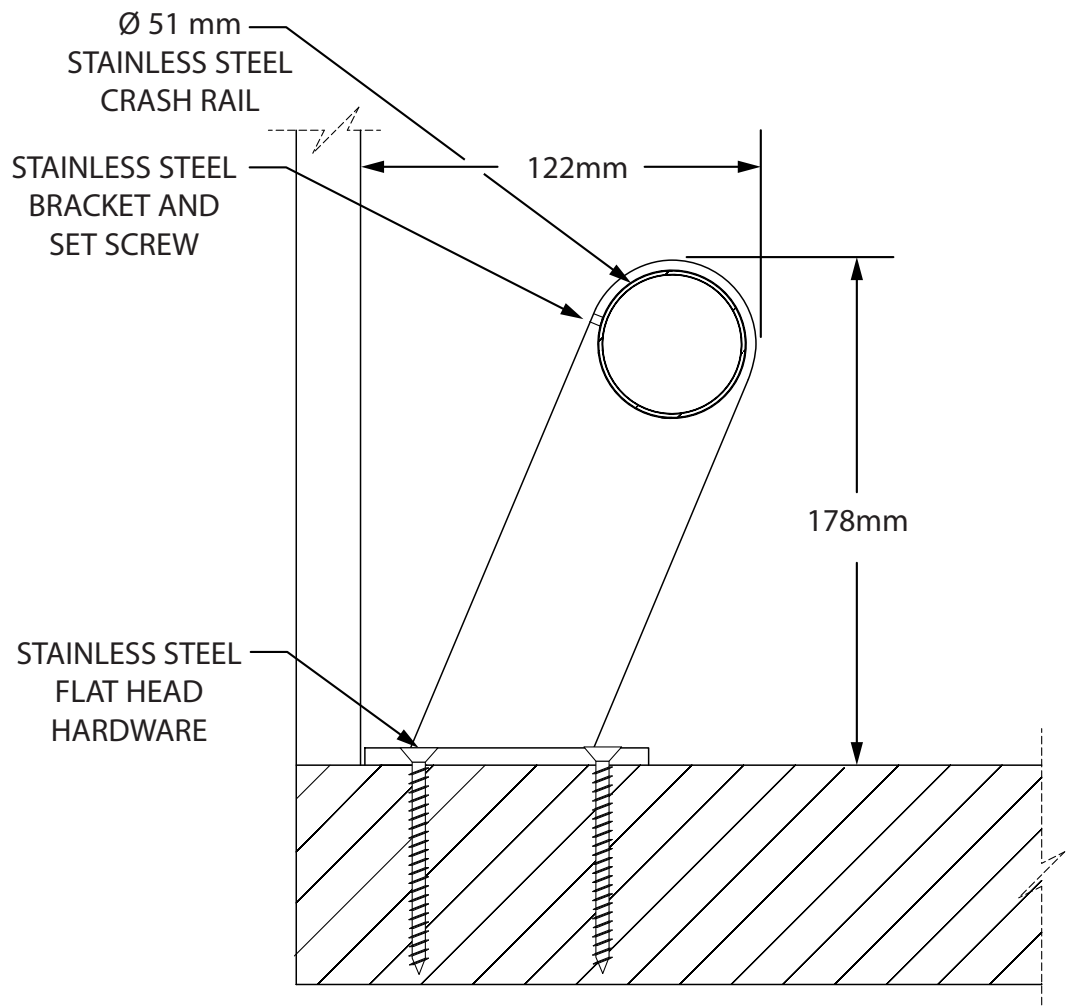
## 62SS Crash Rail - Floor Mounted

### Important

1. Acclimate materials 24 hrs. before installation. Maintain temperature controlled environment after installation.
2. Install in accordance with manufacturer's installation instructions. Failure to do so will void the warranty.

### Installation Tips

1. Use a carbide toothed compound miter saw blade when cutting stainless rail components.
2. Lubricate blades when cutting to reduce burrs.
3. Clean all cuts using a file or de-burring tool.
4. Reference last page for adhering corner pieces and splicing components.



IPC.3203/REV.1

IPC® Door + Wall Protection

inpro.com • 800.222.5556 • 262.679.9010

World Headquarters S80 W18766 Apollo Drive, Muskego, WI 53150 USA

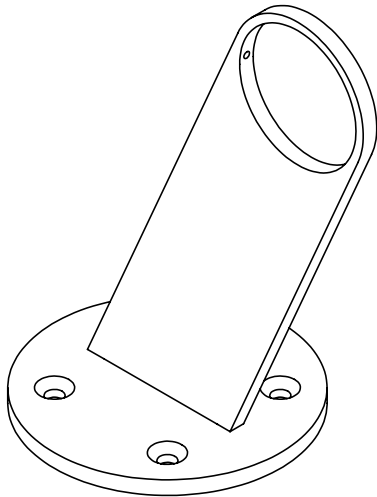
Installation Hotline: 866.394.6776

**inpro**®

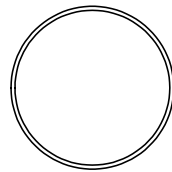
# Installation Instructions

62SS Crash Rail - Floor Mounted

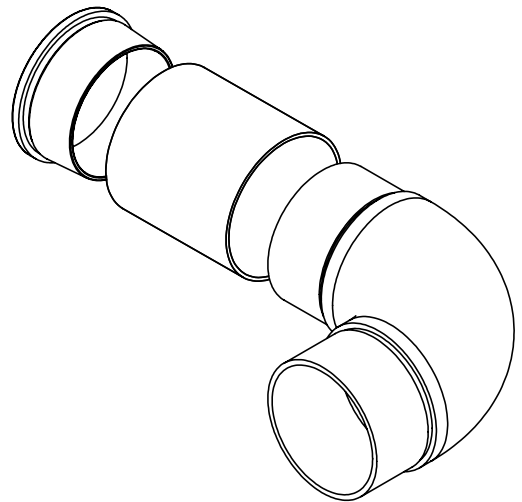
## Components and Fasteners



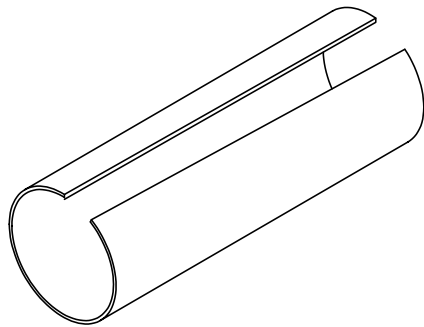
AE62SSBK  
Stainless Steel Bracket



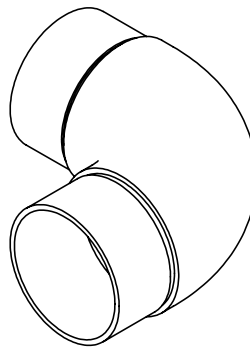
AE62SS  
Stainless Steel Rail  
(3 meter length)



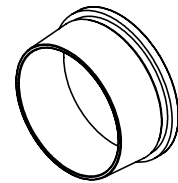
AE62SS-FMRET  
Three Part Return  
(Assembled In Field)



AE62SS-SPL  
Stainless Steel Splice



AE62SS-ICOC  
Stainless Steel  
Inside/Outside  
Corner



AE62SS-SSEC  
Stainless Steel End Cap

Substrate	Specified Fasteners	Inpro Part#
Concrete	1/4" x 1 3/4" Phillips Flat Head Concrete Screw Anchor	HWK-62SS-C

IPC® Door + Wall Protection

inpro.com • 800.222.5556 • 262.679.9010

World Headquarters S80 W18766 Apollo Drive, Muskego, WI 53150 USA

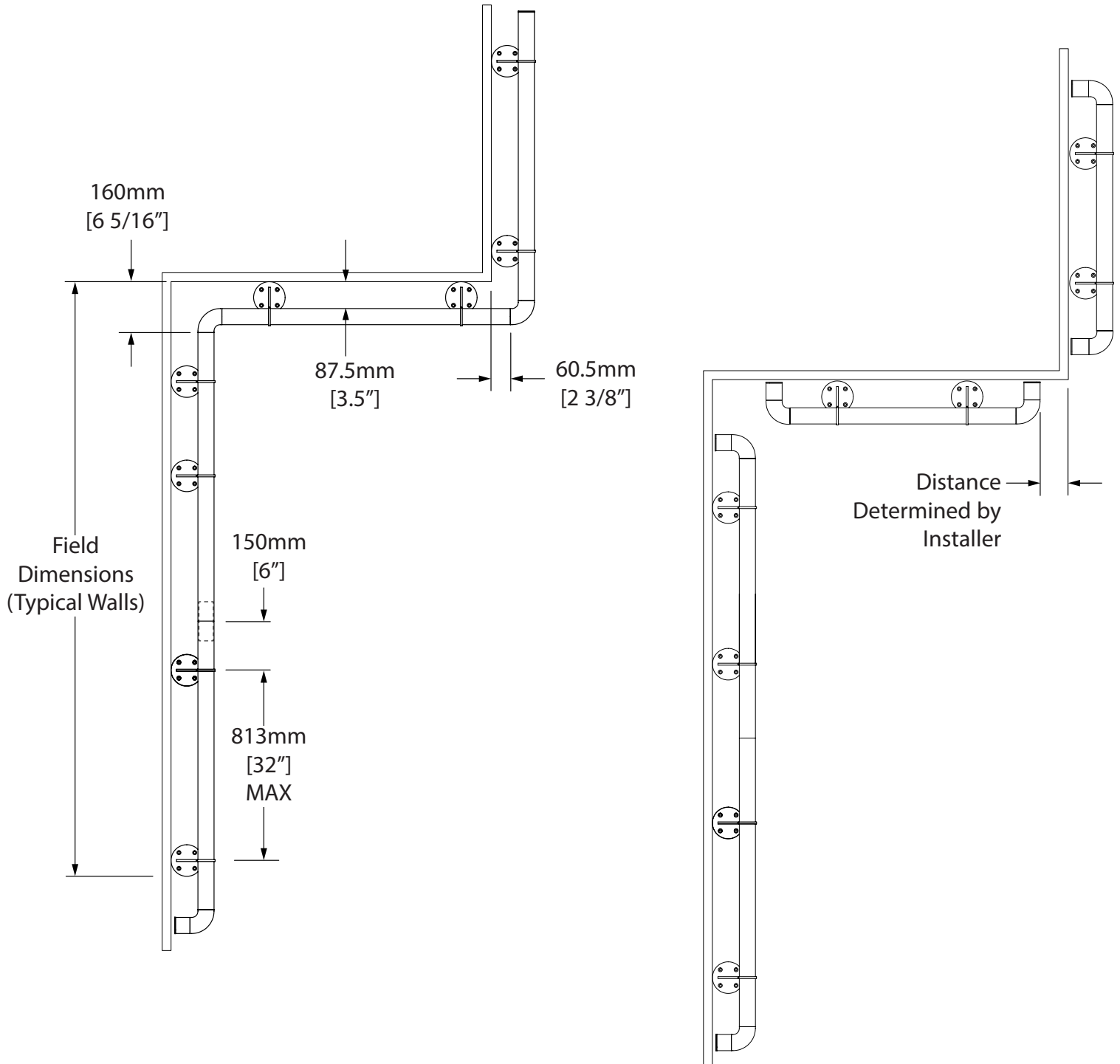
Installation Hotline: 866.394.6776

**inpro**®

# Installation Instructions

62SS Crash Rail - Floor Mounted

## Layout Views



IPC® Door + Wall Protection

inpro.com • 800.222.5556 • 262.679.9010

World Headquarters S80 W18766 Apollo Drive, Muskego, WI 53150 USA

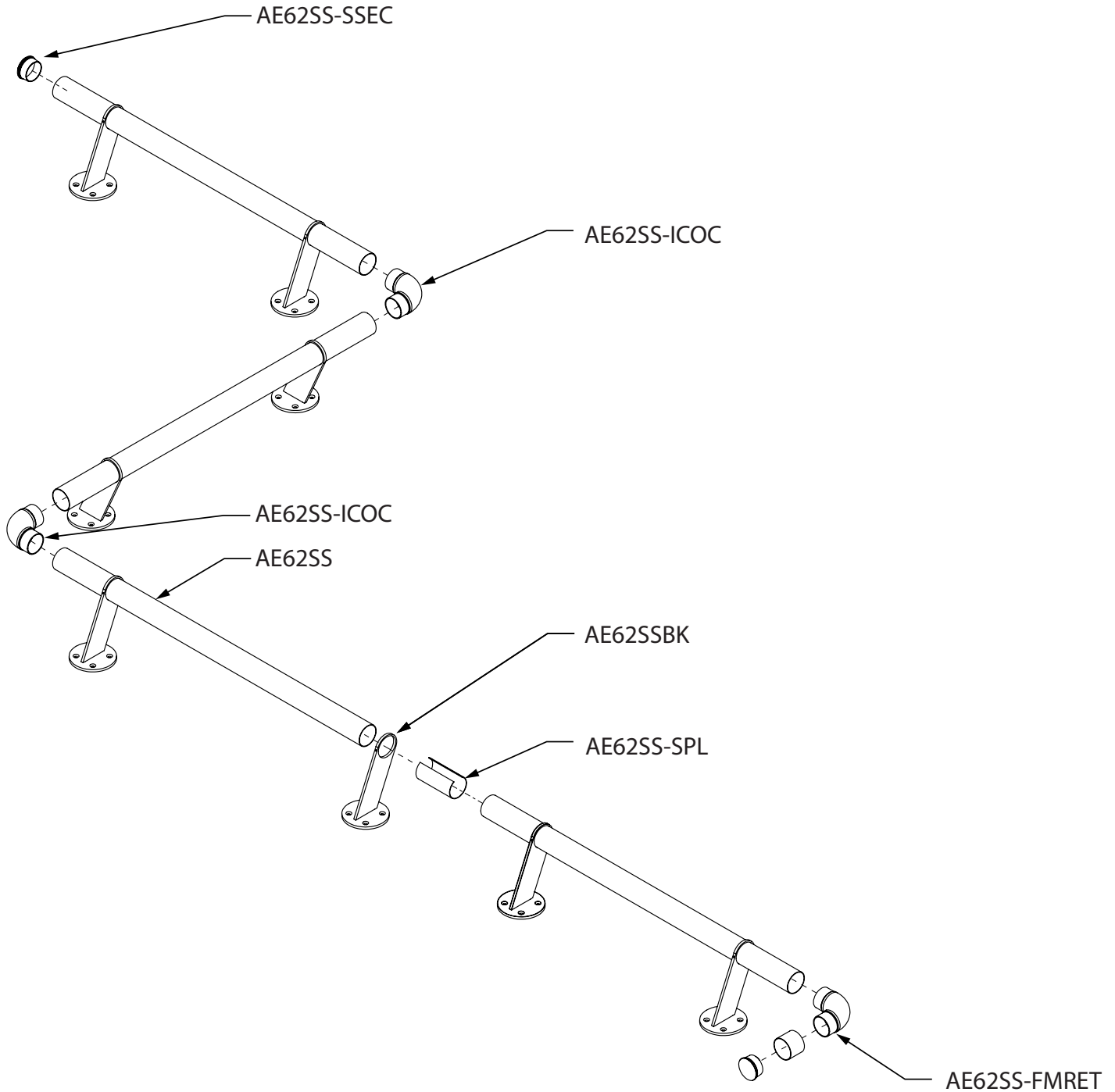
Installation Hotline: 866.394.6776

**inpro**®

# Installation Instructions

62SS Crash Rail - Floor Mounted

## Exploded Assembly



IPC® Door + Wall Protection

[inpro.com](http://inpro.com) • 800.222.5556 • 262.679.9010

World Headquarters S80 W18766 Apollo Drive, Muskego, WI 53150 USA

Installation Hotline: 866.394.6776

**inpro**®

# Installation Instructions

## 62SS Crash Rail - Floor Mounted

Please read all instructions before installing the crash rail.

Material must be stored, installed and used in environmentally controlled conditions.

1. Before installation dry fit the first section of rail. If run includes a corner condition, begin installation at corners first. (See last page for assembly)

NOTE: If installation includes both inside and outside corners, always begin at inside corner first.

2. Position floor brackets on the floor flush and parallel with the wall and use the pre-drilled holes on the bracket to mark anchor locations on the floor.

3. Remove assembly from floor and drill marked anchor locations for the first section of rail using a 6mm Concrete Drill Bit to a depth of 35mm.

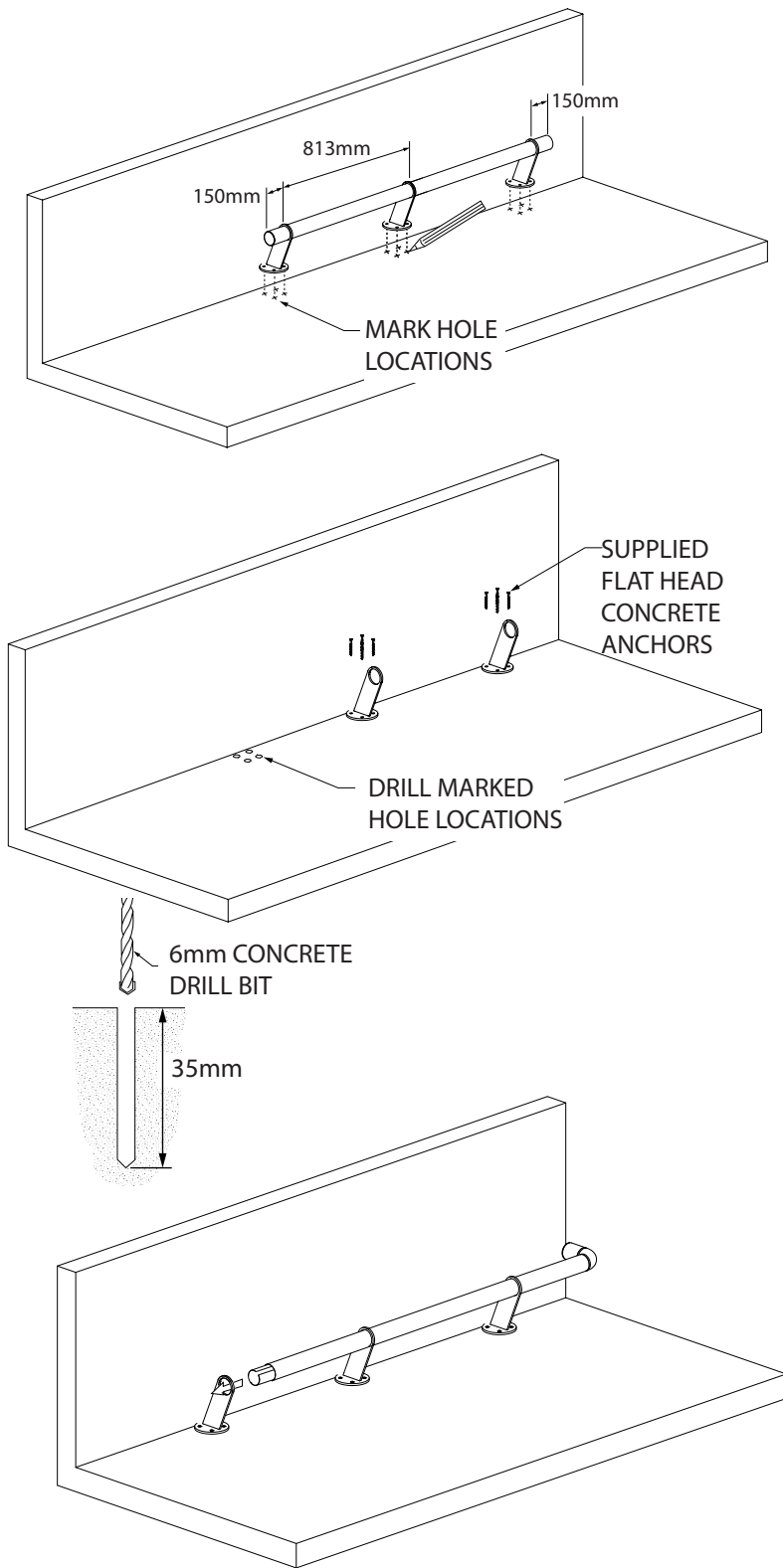
CRITICAL: Hole depth must be 35mm (or deeper) failure to drill to proper depth may result in fastener breakage.

CRITICAL: Drive screw anchors until flat head is flush with top of bracket. Do not over tighten anchors.

4. Return first set of brackets to location and drive supplied flat head concrete screw anchors into the drilled holes using an impact drill driver.

5. Install the first length of rail into the brackets. (Depending on location, the first rail will either have a return or corner piece)

6. Dry fit a splice piece into the end of the rail.



IPC® Door + Wall Protection

inpro.com • 800.222.5556 • 262.679.9010

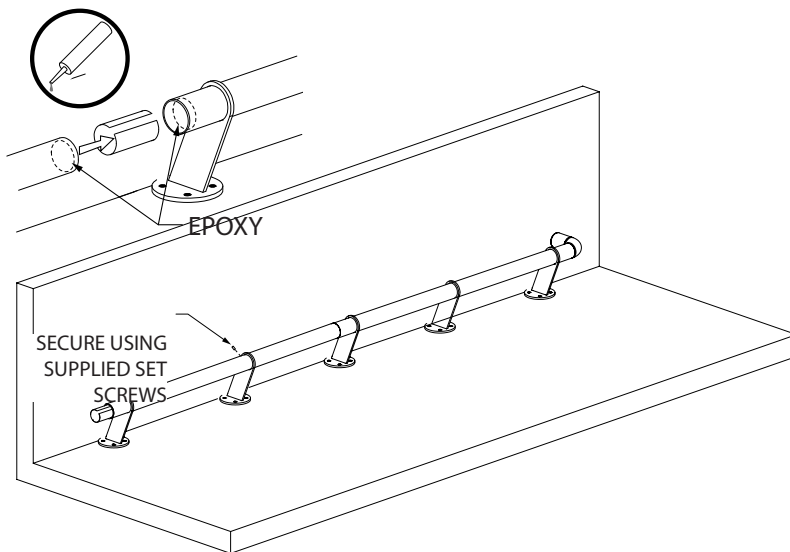
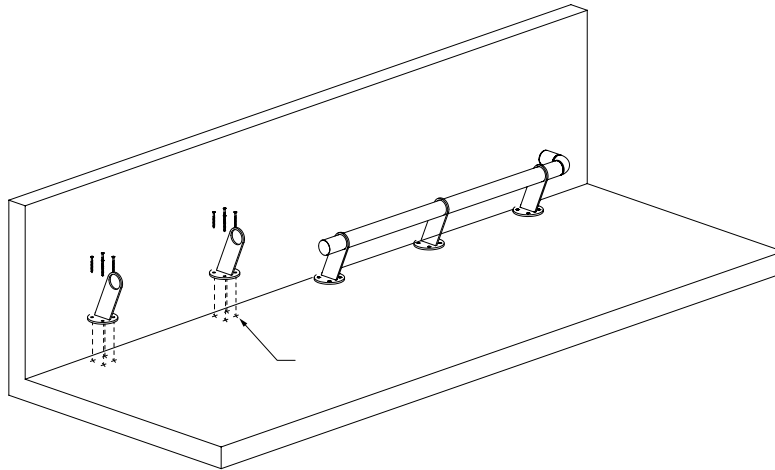
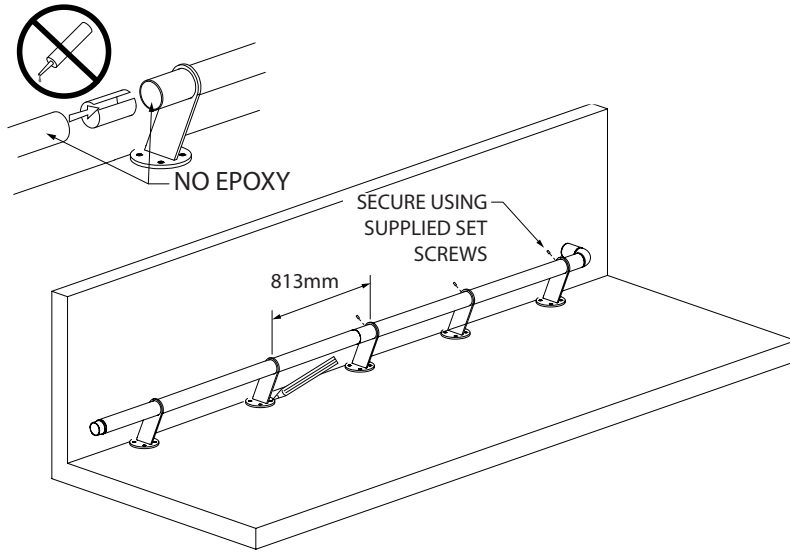
World Headquarters S80 W18766 Apollo Drive, Muskego, WI 53150 USA

Installation Hotline: 866.394.6776

**inpro**®

# Installation Instructions

## 62SS Crash Rail - Floor Mounted



7. Secure straight length into position by tightening the set screw on each bracket.

8. Pre-assemble next length of rail and dry fit to the previously installed rail.

NOTE: Do not use epoxy on splice component when dry fitting

9. Continue straight run installation by repeating steps 2 - 4.

10. After securing brackets, slide rail into brackets. Apply an epoxy bead to the inside wall, 25mm from the end of the rail. Repeat step on intersecting rail and insert splice piece. Holding splice in the middle, pinch the splice together, and slide the adjoining rails over, until the rail end touch.

11. Continue installation. If installation began at a corner, install intersecting rail, then continue installation run on either side.

IPC® Door + Wall Protection

inpro.com • 800.222.5556 • 262.679.9010

World Headquarters S80 W18766 Apollo Drive, Muskego, WI 53150 USA

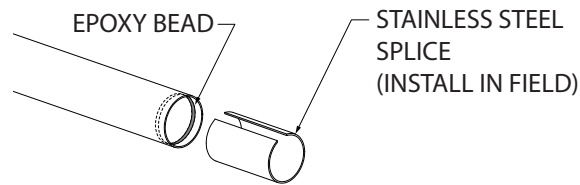
Installation Hotline: 866.394.6776

**inpro**®

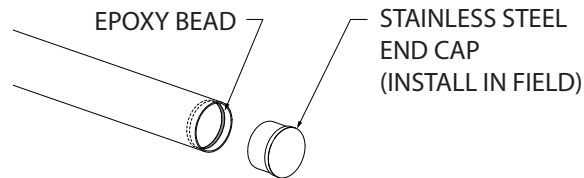
# Installation Instructions

## 62SS Crash Rail - Floor Mounted

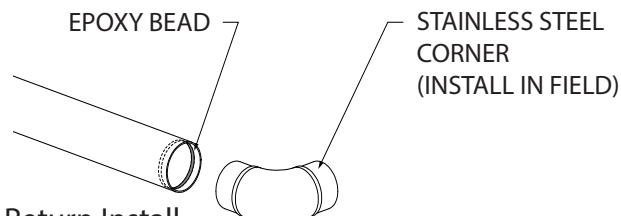
### Splice Install



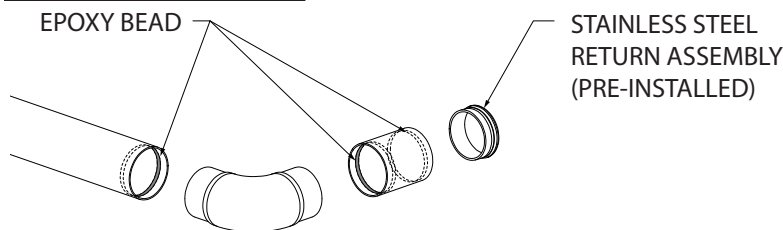
### End Cap Install



### Corner Install



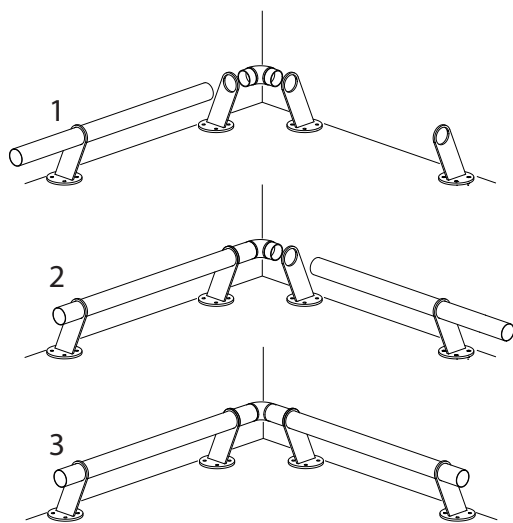
### Return Install



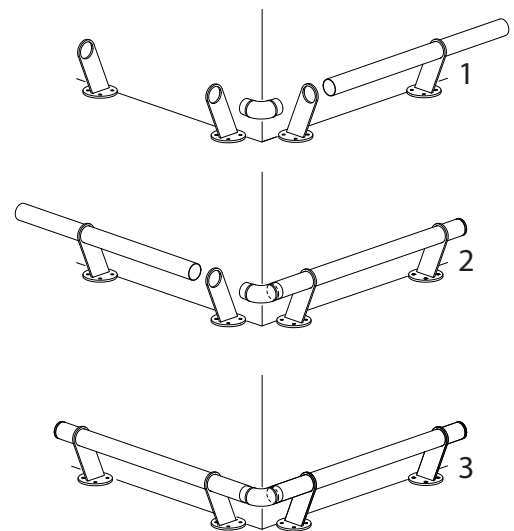
### Splicing/Transition Instructions

1. Assemble glue gun, cartridge, and tips per the manufactures instructions.
  2. Apply a 5mm bead of epoxy to the inside wall of the stainless steel rail.
  3. Insert corner, splice, or end cap. Use a clean rag and denatured alcohol to clean up any epoxy on the outside of the rail.
- NOTE: For corners only pre-adhere one straight rail to each, adhere next straight rail in-field.
4. For returns, pre-glue all components together before installing rail. Allow components to cure for 5 hours.

### Inside Corner Assembly



### Outside Corner Assembly



IPC® Door + Wall Protection

inpro.com • 800.222.5556 • 262.679.9010

World Headquarters S80 W18766 Apollo Drive, Muskego, WI 53150 USA

Installation Hotline: 866.394.6776

**inpro**®