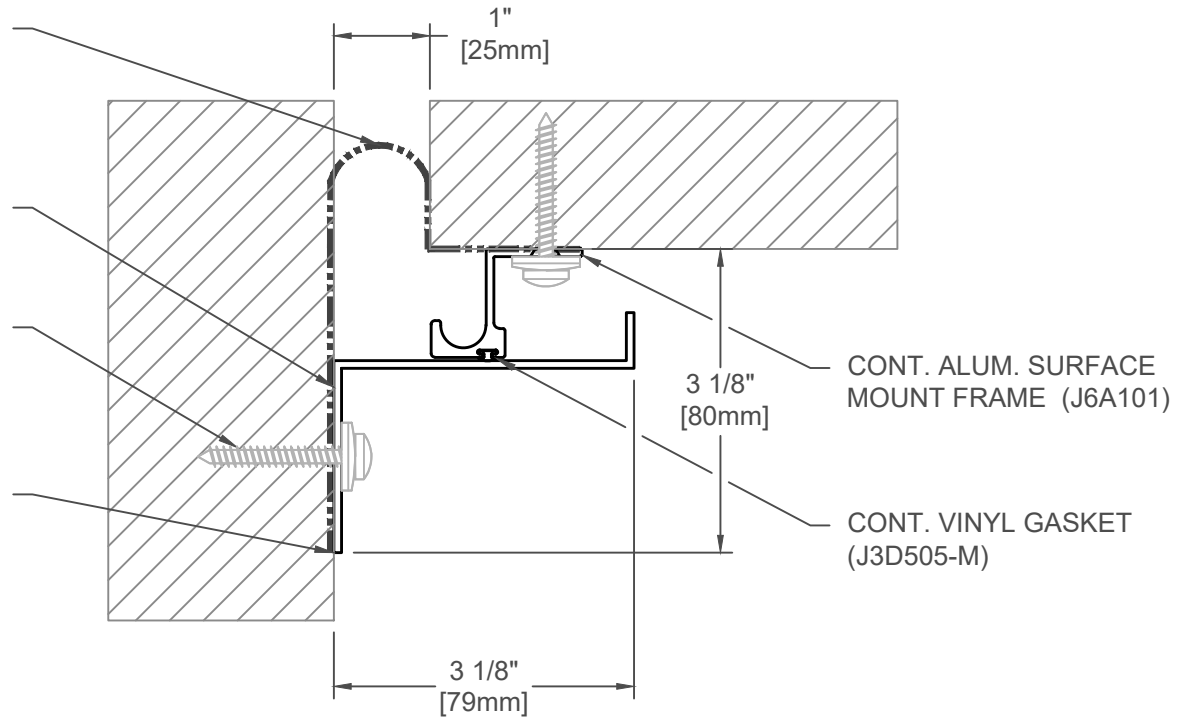


REINF. EPDM VAPOR BARRIER (JL006-RVB) NOTE: SET IN CONT. BED OF BUTYL SEALANT (BY OTHERS) TERMINATE RVB AT OUTSIDE EDGES OF SYSTEM

CONT. ALUM. HALF PLATE (J6C109-F) 6" [152mm]  
SPLICE PLATE (J6C109-FSP)

#12 x 1 1/2" [M5x38] STAINLESS PAN HEAD SCREW THRU NEOPRENE WEATHER WASHER (7 PER FRAME @ 18" [457mm] O.C.) (JKSS28)

APPLY CONT. BEAD OF SEALANT AT FULL PERIMETER (BY OTHERS)



### 651-A09-025

JOINT WIDTH		MOVEMENT ±			
		HORIZONTAL		VERTICAL	
US	mm	US	mm	US	mm
1"	25	1/2"	13	1/2"	13

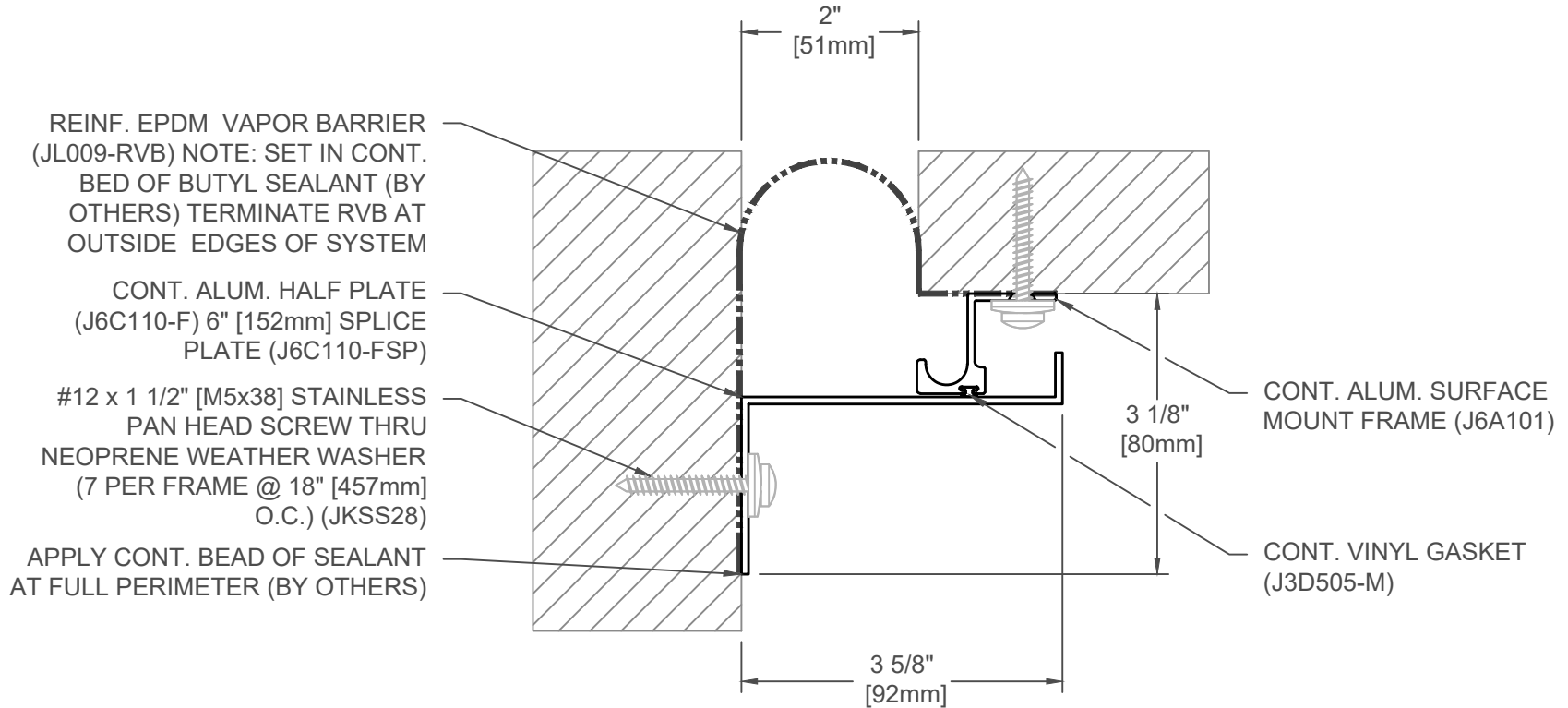
FINISH: MILL
PROJECT:
CUSTOMER:
LOCATION:

APPLICATION:  
WALL/CORNER, WALL/CEILING  
SURFACE MOUNT  
EXTERIOR CONDITION

DATE:	12-6-04
SCALE:	1:2
DOC:	CADJM.002/R5

**inpro.**

For More Information Visit: [Inprocorp.com](http://Inprocorp.com)



### 651-A09-050

JOINT WIDTH		MOVEMENT ±			
		HORIZONTAL		VERTICAL	
US	mm	US	mm	US	mm
2"	51	1"	25	1"	25

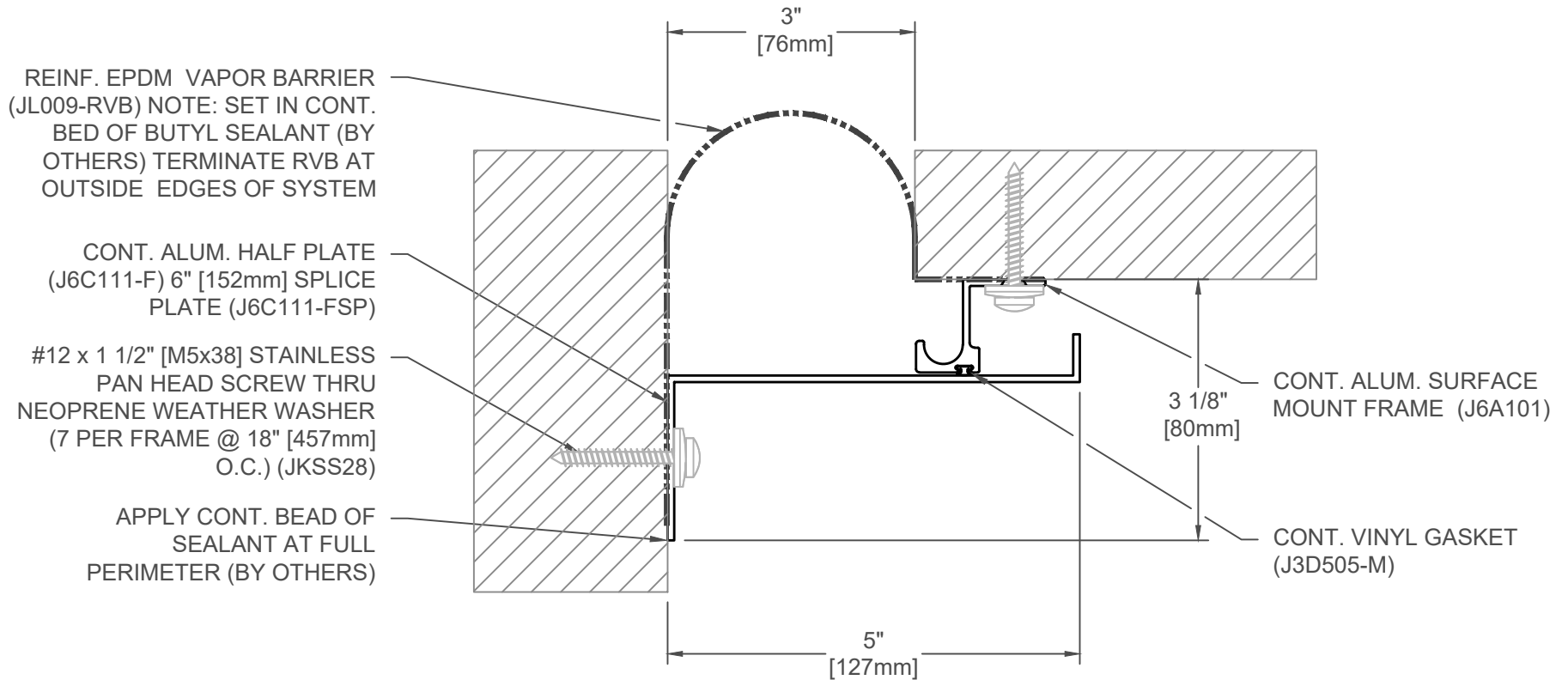
FINISH: MILL
PROJECT:
CUSTOMER:
LOCATION:

APPLICATION-  
WALL/CORNER, WALL/CEILING  
SURFACE MOUNT  
EXTERIOR CONDITION

DATE:	12-6-04
SCALE:	1:2
DOC:	CADJM.002/R5



For More Information Visit: [Inprocorp.com](http://Inprocorp.com)



### 651-A09-075

JOINT WIDTH		MOVEMENT ±			
		HORIZONTAL		VERTICAL	
US	mm	US	mm	US	mm
3"	76	1-1/2"	38	1-1/2"	38

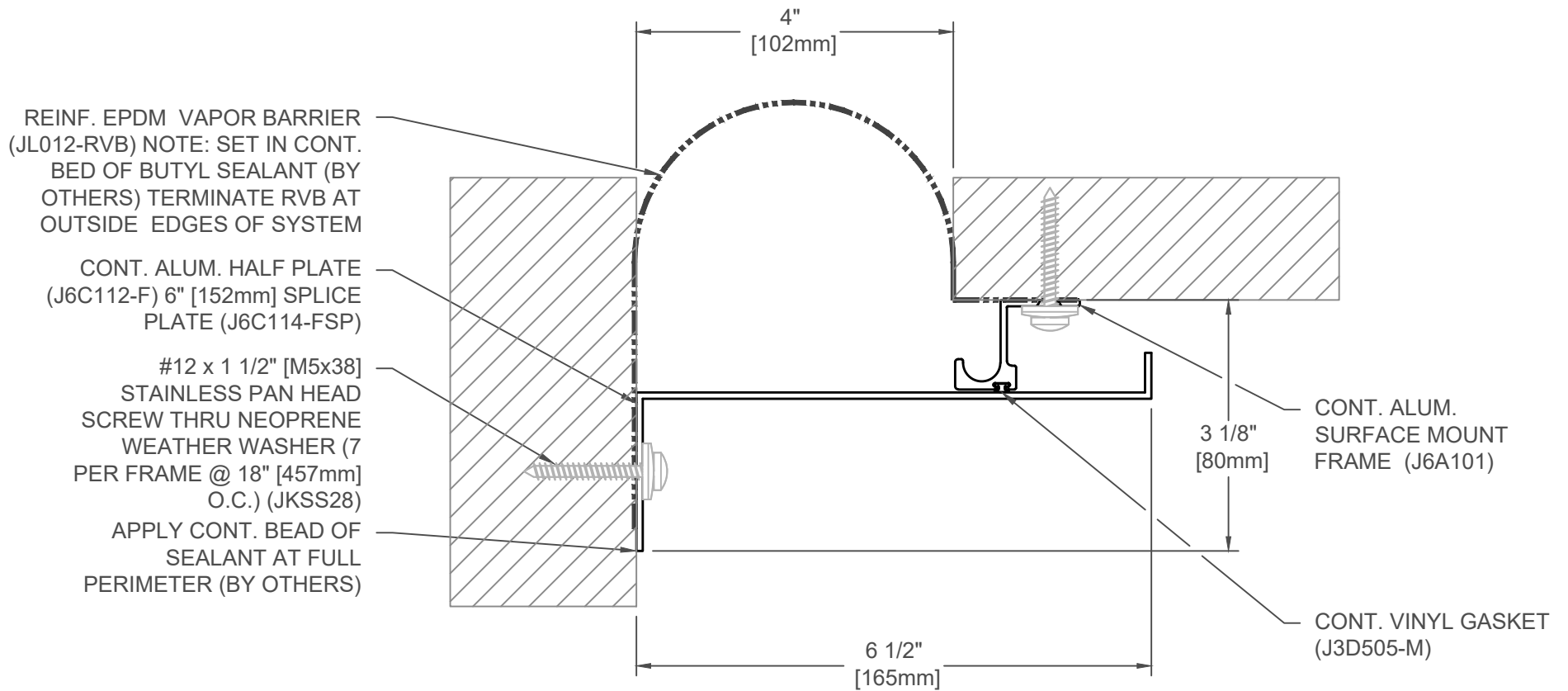
FINISH: MILL
PROJECT:
CUSTOMER:
LOCATION:

APPLICATION-  
WALL/CORNER, WALL/CEILING  
SURFACE MOUNT  
EXTERIOR CONDITION

DATE:	12-6-04
SCALE:	1:2
DOC:	CADJM.002/R5

**inpro.**

For More Information Visit: [Inprocorp.com](http://Inprocorp.com)



### 651-A09-100

JOINT WIDTH		MOVEMENT ±			
		HORIZONTAL		VERTICAL	
US	mm	US	mm	US	mm
4"	102	2"	51	2"	51

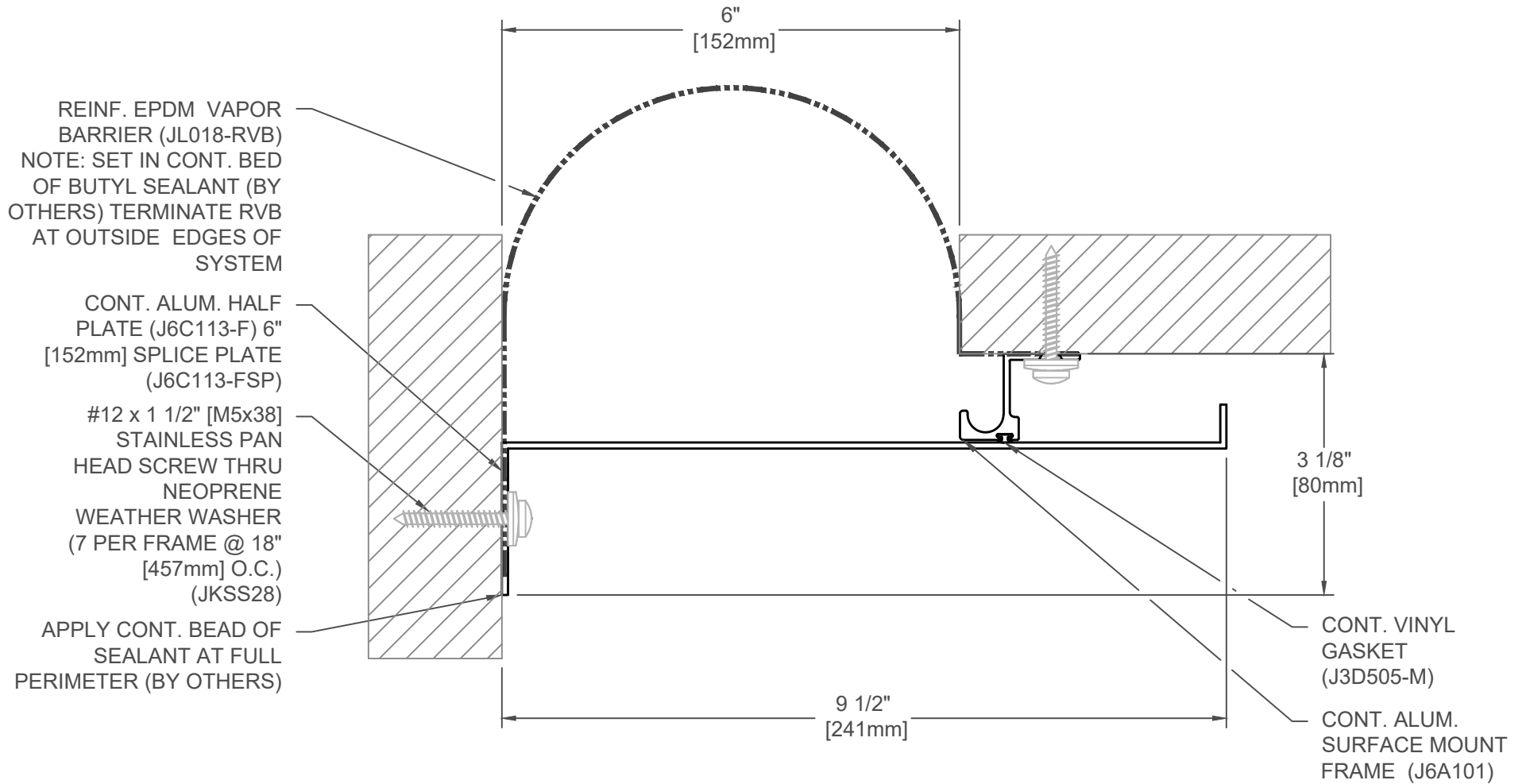
FINISH: MILL
PROJECT:
CUSTOMER:
LOCATION:

APPLICATION-  
WALL/CORNER, WALL/CEILING  
SURFACE MOUNT  
EXTERIOR CONDITION

DATE:	12-6-04
SCALE:	1:2
DOC:	CADJM.002/R5

**inpro.**

For More Information Visit: [Inprocorp.com](http://Inprocorp.com)



### 651-A09-150

JOINT WIDTH		MOVEMENT ±			
		HORIZONTAL		VERTICAL	
US	mm	US	mm	US	mm
6"	152	3"	76	3"	76

FINISH: MILL
PROJECT:
CUSTOMER:
LOCATION:

APPLICATION-  
WALL/CORNER, WALL/CEILING  
SURFACE MOUNT  
EXTERIOR CONDITION

DATE:	12-6-04
SCALE:	1:2
DOC:	CADJM.002/R5

**inpro.**

For More Information Visit: [Inprocorp.com](http://Inprocorp.com)

REINF. EPDM VAPOR BARRIER (JL018-RVB) NOTE: SET IN CONT. BED OF BUTYL SEALANT (BY OTHERS) TERMINATE RVB AT OUTSIDE EDGES OF SYSTEM

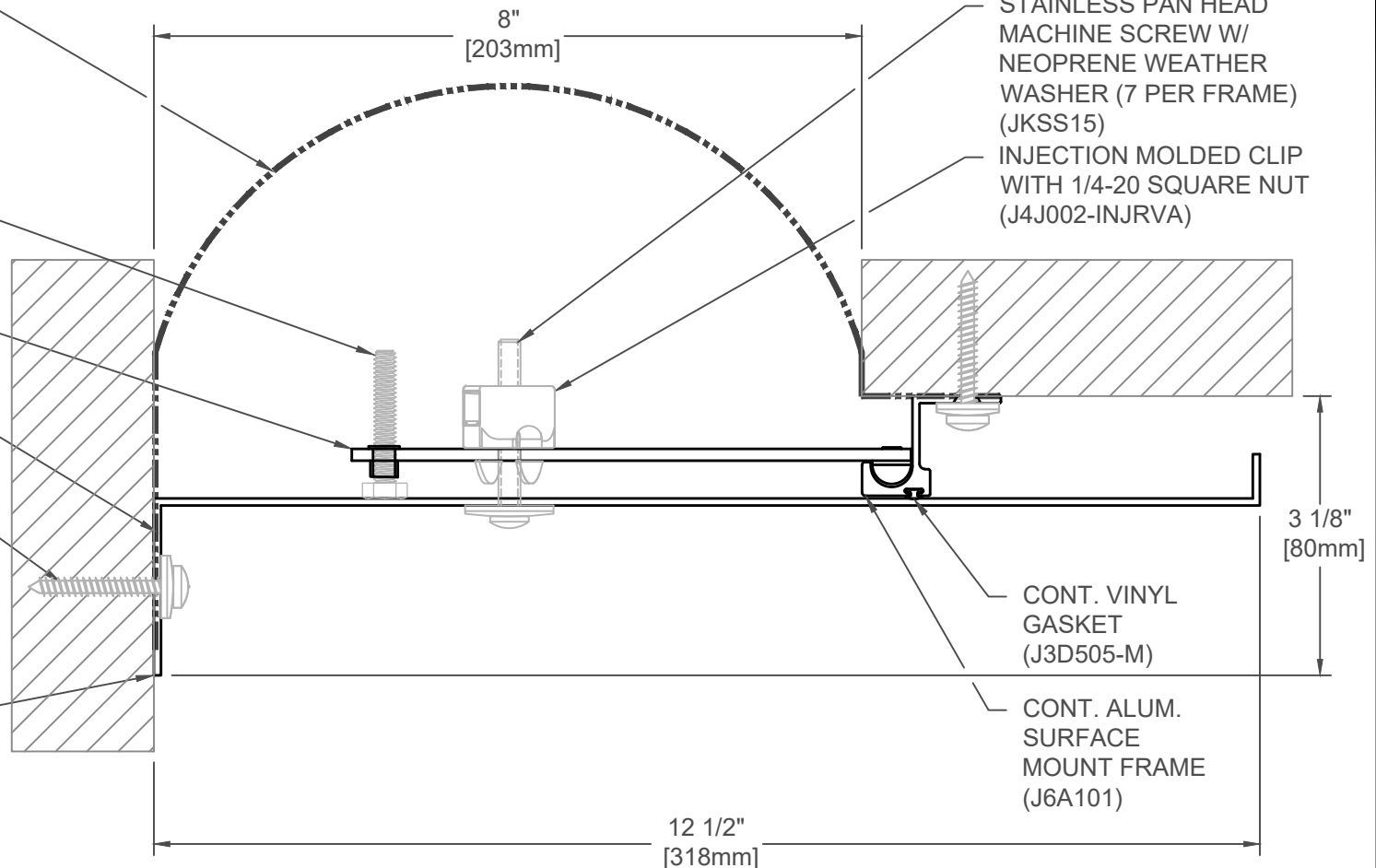
1/4"-20 X 1 1/2" HEX HEAD CAP SCREW (JK112)

STAINLESS STEEL CENTERING BAR (7 PER PLATE @ 18" [457mm] O.C.)(J7J012-HDBW)

CONT. ALUM. HALF PLATE (J6C114-F) 6" [152mm] SPLICE PLATE (J6C114-FSP)

#12 x 1 1/2" [M5x38] STAINLESS PAN HEAD SCREW THRU NEOPRENE WEATHER WASHER (7 PER FRAME @ 18" [457mm] O.C.) (JKSS28)

APPLY CONT. BEAD OF SEALANT AT FULL PERIMETER (BY OTHERS)



### 651-A09-200

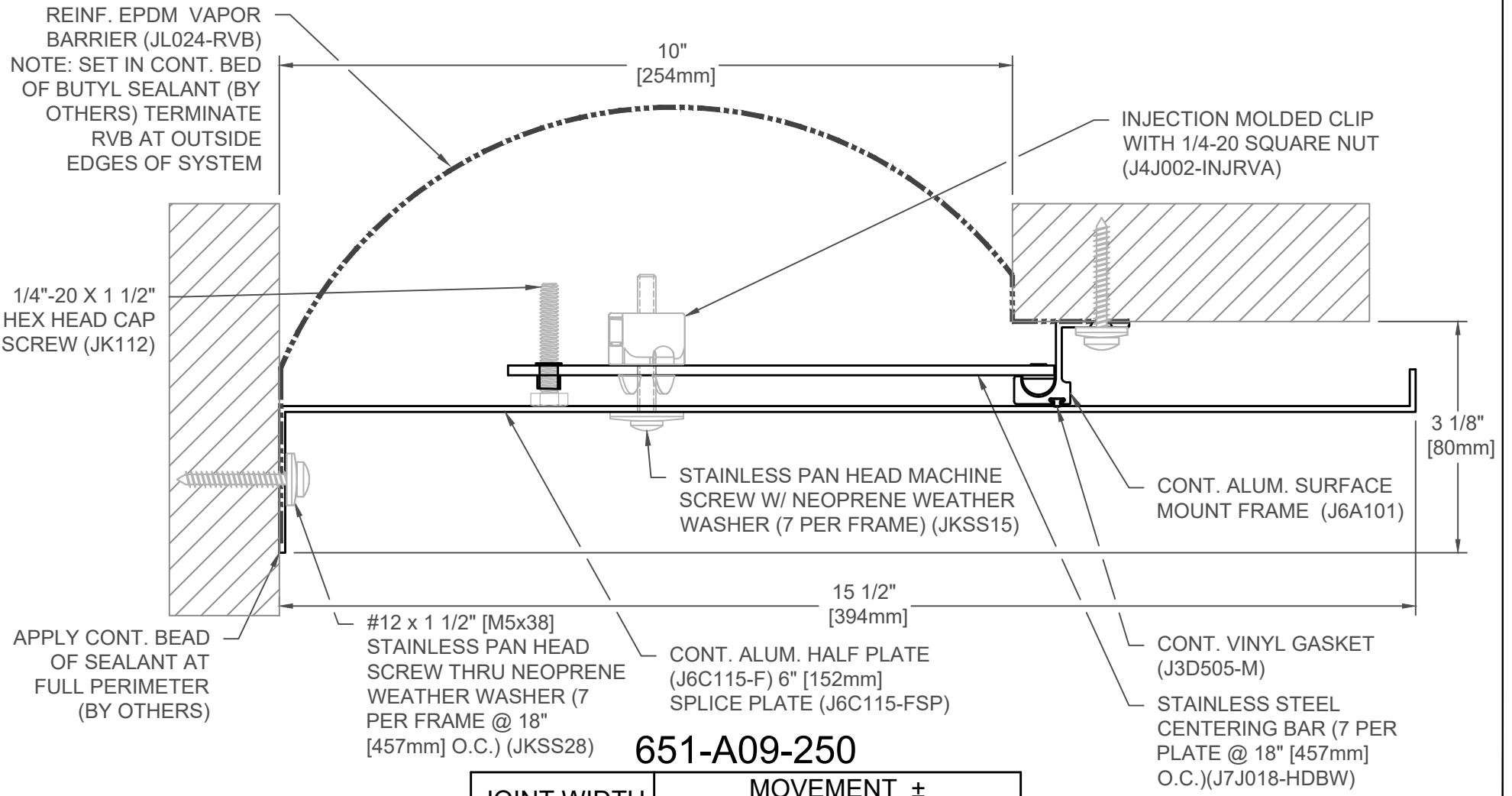
JOINT WIDTH		MOVEMENT ±			
		HORIZONTAL		VERTICAL	
US	mm	US	mm	US	mm
8"	203	4"	102	4"	102

FINISH: MILL
PROJECT:
CUSTOMER:
LOCATION:

APPLICATION:  
WALL/CORNER, WALL/CEILING  
SURFACE MOUNT  
EXTERIOR CONDITION

DATE:	12-6-04
SCALE:	1:2
DOC:	CADJM.002/R5

**inpro.**  
For More Information Visit: [Inprocorp.com](http://Inprocorp.com)



### 651-A09-250

JOINT WIDTH		MOVEMENT ±			
		HORIZONTAL		VERTICAL	
US	mm	US	mm	US	mm
10"	254	5"	127	5"	127

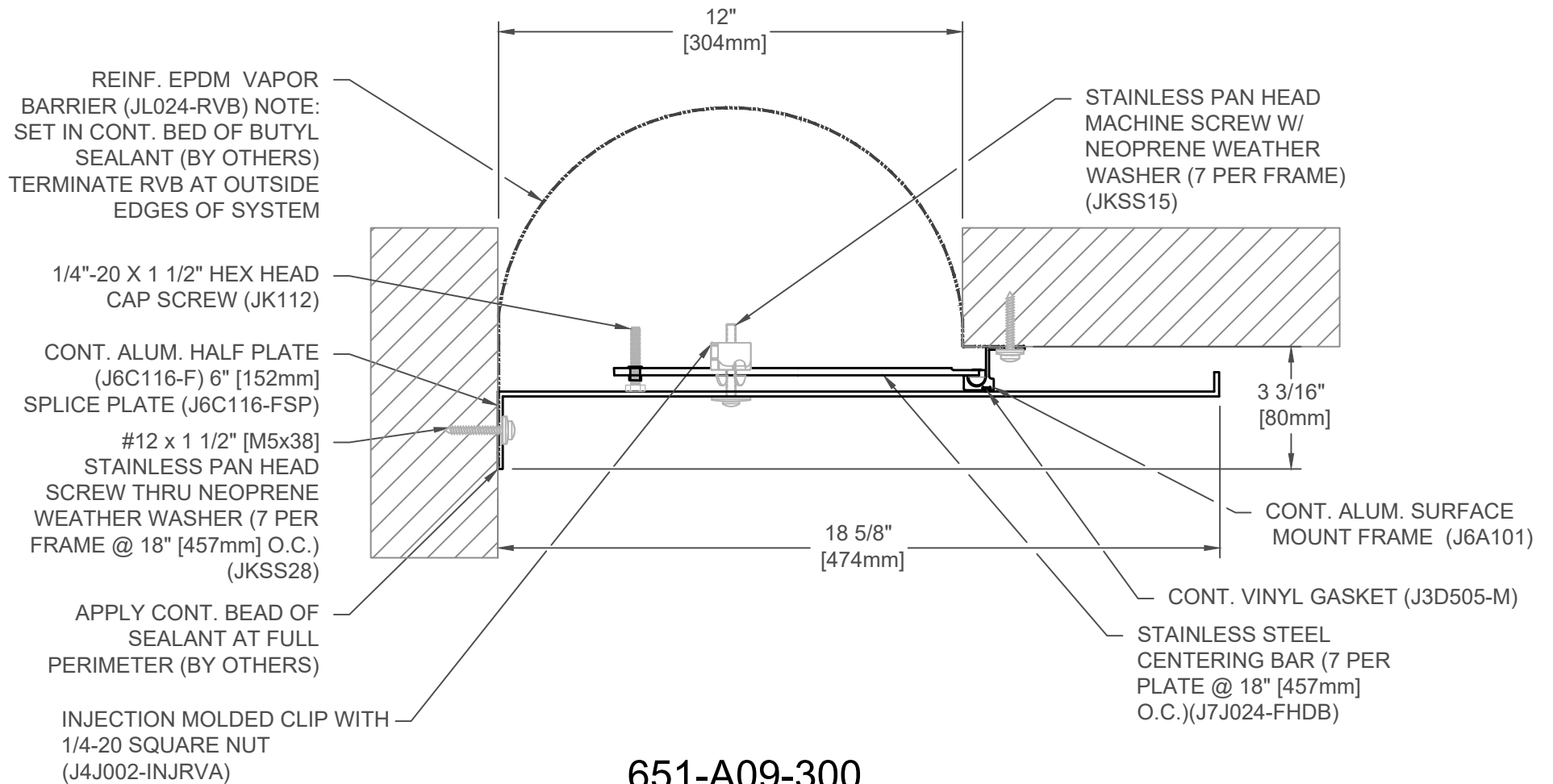
FINISH: MILL
PROJECT:
CUSTOMER:
LOCATION:

APPLICATION-  
WALL/CORNER, WALL/CEILING  
SURFACE MOUNT  
EXTERIOR CONDITION

DATE:	12-7-16
SCALE:	1:2
DOC:	CADJM.002/R5

**inpro.**

For More Information Visit: [Inprocorp.com](http://Inprocorp.com)



### 651-A09-300

JOINT WIDTH		MOVEMENT ±			
		HORIZONTAL		VERTICAL	
US	mm	US	mm	US	mm
12"	305	6"	152	6"	152

FINISH: MILL
PROJECT:
CUSTOMER:
LOCATION:

APPLICATION-  
WALL/CORNER, WALL/CEILING  
SURFACE MOUNT  
EXTERIOR CONDITION

DATE:	4-13-05
SCALE:	1:4
DOC:	CADJM.002/R5

**inpro.**  
For More Information Visit: [Inprocorp.com](http://Inprocorp.com)



REINF. EPDM VAPOR BARRIER (JL024-RVB) NOTE: SET IN CONT. BED OF BUTYL SEALANT (BY OTHERS) TERMINATE RVB AT OUTSIDE EDGES OF SYSTEM

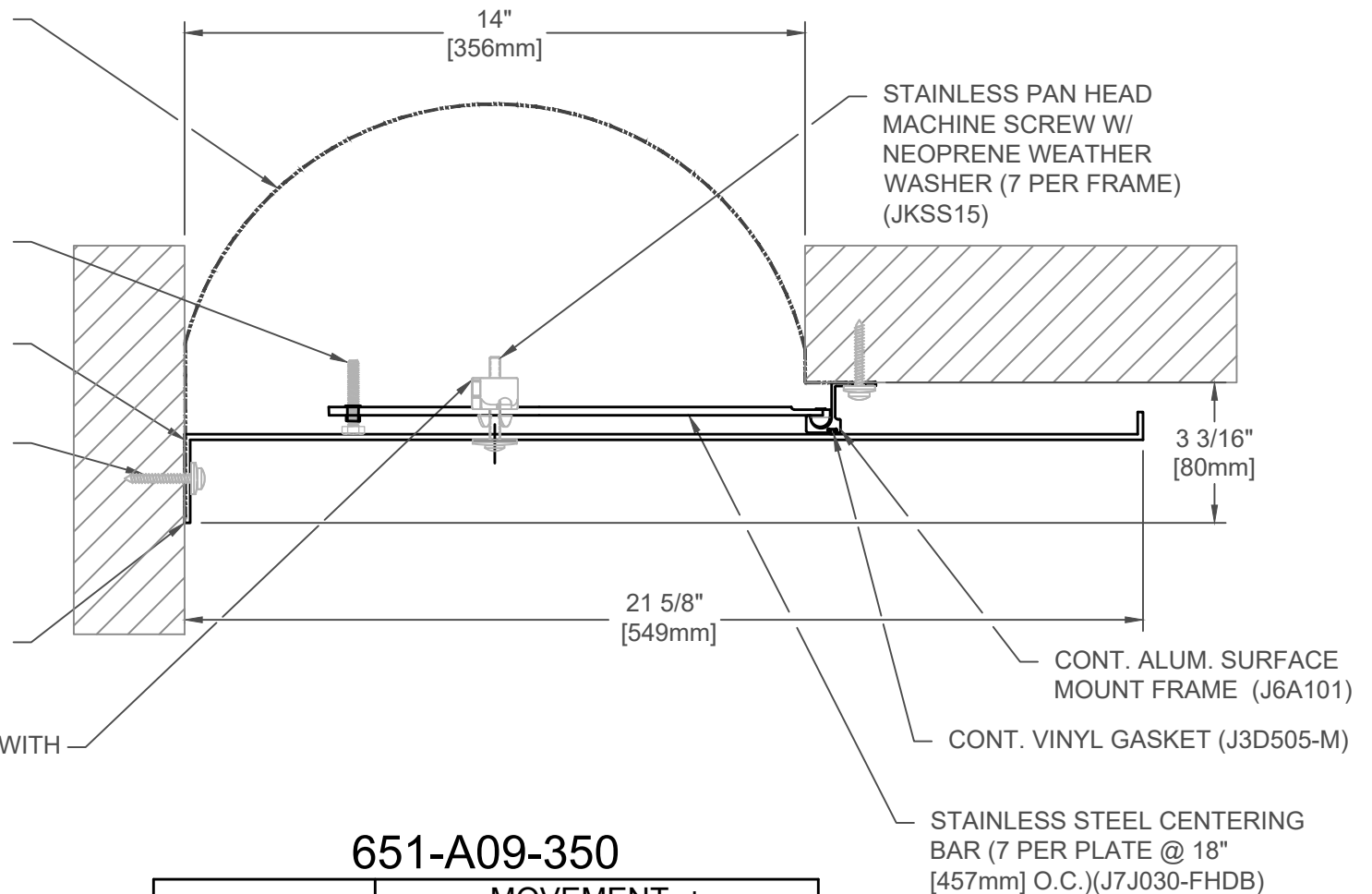
1/4"-20 X 1 1/2" HEX HEAD CAP SCREW (JK112)

CONT. ALUM. HALF PLATE (J6C116-F) 6" [152mm] SPLICE PLATE (J6C116-FSP)

#12 x 1 1/2" [M5x38] STAINLESS PAN HEAD SCREW THRU NEOPRENE WEATHER WASHER (7 PER FRAME @ 18" [457mm] O.C.) (JKSS28)

APPLY CONT. BEAD OF SEALANT AT FULL PERIMETER (BY OTHERS)

INJECTION MOLDED CLIP WITH 1/4-20 SQUARE NUT (J4J002-INJRVA)



### 651-A09-350

JOINT WIDTH		MOVEMENT ±			
		HORIZONTAL		VERTICAL	
US	mm	US	mm	US	mm
14"	356	7"	178	7"	178

FINISH: MILL
PROJECT:
CUSTOMER:
LOCATION:

APPLICATION-  
WALL/CORNER, WALL/CEILING  
SURFACE MOUNT  
EXTERIOR CONDITION

DATE:	12-7-16
SCALE:	1:4
DOC:	CADJM.002/R5

REINF. EPDM VAPOR BARRIER (JL024-RVB) NOTE: SET IN CONT. BED OF BUTYL SEALANT (BY OTHERS) TERMINATE RVB AT OUTSIDE EDGES OF SYSTEM

1/4"-20 X 1 1/2" HEX HEAD CAP SCREW (JK112)

CONT. ALUM. HALF PLATE (J6C116-F) 6" [152mm] SPLICE PLATE (J6C116-FSP)

#12 x 1 1/2" [M5x38] STAINLESS PAN HEAD SCREW THRU NEOPRENE WEATHER WASHER (7 PER FRAME @ 18" [457mm] O.C.) (JKSS28)

APPLY CONT. BEAD OF SEALANT AT FULL PERIMETER (BY OTHERS)

INJECTION MOLDED CLIP WITH 1/4-20 SQUARE NUT (J4J002-INJRVVA)

16" [406mm]

STAINLESS PAN HEAD MACHINE SCREW W/ NEOPRENE WEATHER WASHER (7 PER FRAME) (JKSS15)

3 3/16" [81mm]

25" [635mm]

CONT. ALUM. SURFACE MOUNT FRAME (J6A101)

CONT. VINYL GASKET (J3D505-M)

STAINLESS STEEL CENTERING BAR (7 PER PLATE @ 18" [457mm] O.C.)(J7J030-FHDB1)

### 651-A09-400

JOINT WIDTH		MOVEMENT ±			
		HORIZONTAL		VERTICAL	
US	mm	US	mm	US	mm
16"	406	8"	203	8"	203

FINISH: MILL
PROJECT:
CUSTOMER:
LOCATION:

APPLICATION-  
WALL/CORNER, WALL/CEILING  
SURFACE MOUNT  
EXTERIOR CONDITION

DATE:	12-7-16
SCALE:	1:4
DOC:	CADJM.002/R5

**inpro.**  
For More Information Visit: [Inprocorp.com](http://Inprocorp.com)