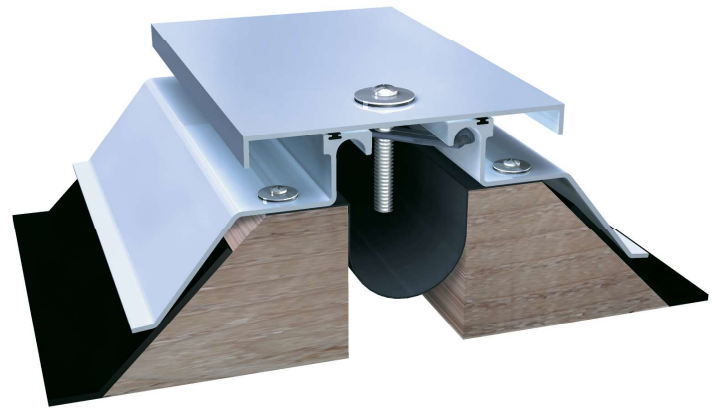


# 661 Series

A01 - Roof to Roof

A02 - Roof to Wall



**Movement Rating ± 50%**

## Product Guide



Seismic



Exterior



Fire Rated  
Option



Vapor Barrier  
Option

- ▶ Easy onsite assembly and installation
- ▶ Multi-directional seismic movement
- ▶ Moisture barrier included
- ▶ Neoprene weather washers prevent leaking where fasteners penetrate frames/covers
- ▶ Canted curb mount
- ▶ Factory formed transitions available
- ▶ Plate available in stainless steel

Application	System	W		H1		H2		S		S1		Movement +/-			
		Joint Width		Frame Height 1		Height 2		Frame Sightline		Plate Sightline		Horizontal		Vertical	
		US	mm	US	mm	US	mm	US	mm	US	mm	US	mm	US	mm
Roof/Roof	661-A01-025	1"	25	1 1/4"	32	*	*	8 7/8"	226	4 1/4"	108	1 1/2"	13	1 1/2"	13
	661-A01-050	2"	51	1 1/4"	32	*	*	8 7/8"	226	5 1/4"	133	1"	25	1"	25
	661-A01-075	3"	76	1 1/4"	32	*	*	9 7/8"	251	6 1/4"	159	1 1/2"	38	1 1/2"	38
	661-A01-100	4"	102	1 1/4"	32	*	*	10 7/8"	276	7 1/4"	184	2"	51	2"	51
	661-A01-150	6"	152	1 1/4"	32	*	*	12 7/8"	327	10 1/2"	267	3"	76	3"	76
	661-A01-200	8"	203	1 1/4"	32	*	*	14 7/8"	378	13 1/2"	343	4"	102	4"	102
	661-A01-250	10"	254	1 1/4"	32	*	*	16 7/8"	429	16 1/2"	394	5"	127	5"	127
	661-A01-300	12"	305	1 3/8"	35	*	*	18 7/8"	480	19 1/2"	495	6"	152	6"	152
Roof/Wall	661-A01-350	14"	356	1 3/8"	35	*	*	20 7/8"	531	22 1/2"	572	7"	178	7"	178
	661-A01-400	16"	406	1 3/8"	35	*	*	22 7/8"	581	25"	635	8"	203	8"	203
	661-A02-025	1"	25	1 1/4"	32	*	*	5 3/16"	132	2 5/8"	67	1 1/2"	13	1 1/2"	13
	661-A02-050	2"	51	1 1/4"	32	*	*	5 7/16"	138	3 5/8"	92	1"	25	1"	25
	661-A02-075	3"	76	1 1/4"	32	*	*	6 7/16"	164	5"	127	1 1/2"	38	1 1/2"	38
	661-A02-100	4"	102	1 1/4"	32	*	*	7 7/16"	189	6 1/2"	165	2"	51	2"	51
	661-A02-150	6"	152	1 1/4"	32	*	*	9 1/2"	241	9 1/2"	241	3"	76	3"	76
	661-A02-200	8"	203	1 1/4"	32	*	*	11 7/16"	291	12 1/2"	318	4"	102	4"	102
661-A02-250	10"	254	1 1/4"	32	*	*	13 7/16"	341	15 1/2"	394	5"	127	5"	127	
661-A02-300	12"	305	1 3/8"	35	*	*	15 7/16"	392	18 5/8"	473	6"	152	6"	152	
661-A02-350	14"	356	1 3/8"	35	*	*	17 7/16"	443	21 5/8"	549	7"	178	7"	178	
661-A02-400	16"	406	1 3/8"	35	*	*	19 7/16"	494	25"	635	8"	203	8"	203	

May be available in larger widths, please contact InPro Corporation for more details.

IPC.864/REV.11

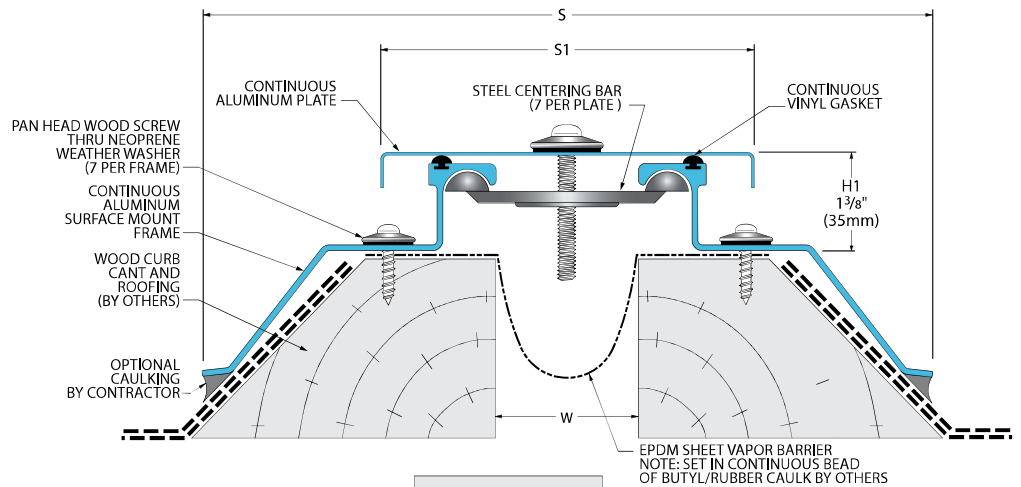
Inprocorp.com • 800.222.5556 • 262.679.9010  
World Headquarters S80 W18766 Apollo Drive, Muskego, WI 53150 USA

**JOINTMASTER®**  
EXPANSION JOINT SYSTEMS  
A DIVISION OF INPRO®

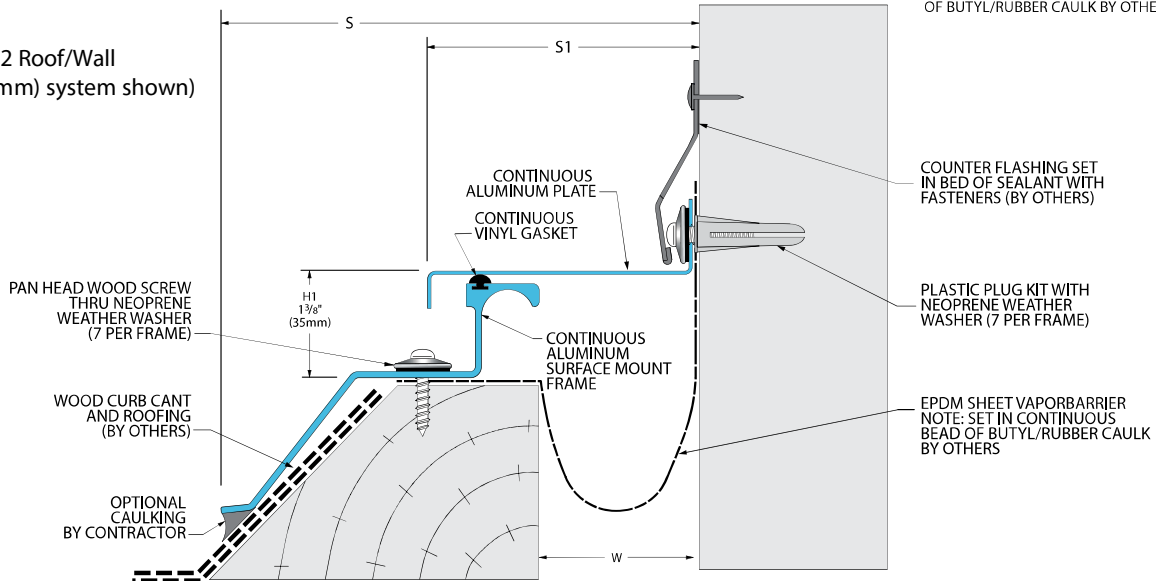
# 661 Series

## Roof Systems

661-A01 Roof/Roof  
(2" (50mm) system shown)

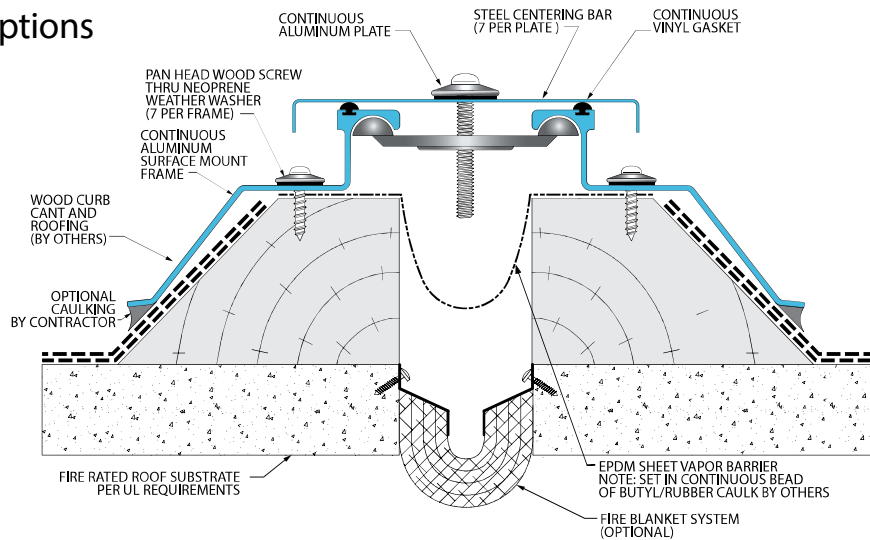


661-A02 Roof/Wall  
(2" (50mm) system shown)



## 661 Series Options

Fire Blanket System  
(661-A01-050 system shown)



Inprocorp.com • 800.222.5556 • 262.679.9010

World Headquarters S80 W18766 Apollo Drive, Muskego, WI 53150 USA

**JOINTMASTER®**

EXPANSION JOINT SYSTEMS  
A DIVISION OF INPRO®