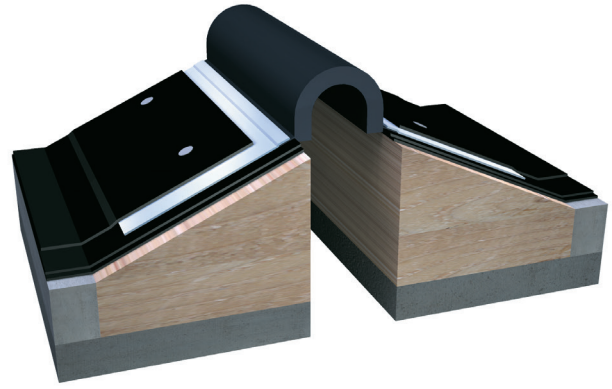


672 Series

G01 - Roof to Roof

G02 - Roof to Wall



Movement Rating ± 50%

Product Guide



Seismic



Exterior



Fire Rated
Option



Vapor Barrier
Option

- ▶ Weatherproof roof system that will remain watertight during the severest seismic events
- ▶ Splicing kits provided for simple installation
- ▶ Black EPDM bellows with galvanized flanges standard
- ▶ White EPDM bellows available
- ▶ Optional PVC bellows and flange available
- ▶ Optional stainless steel, copper, aluminum and EPDM flanges available
- ▶ Factory preformed transitions available
- ▶ Available in 10' lengths as standard
- ▶ 50' rolls available for some profiles.

Application	System	W		H1		H2		S		B		Movement +/-			
		Joint Width		Frame Height 1		Height 2		Sightline		Blockout		Horizontal		Vertical	
		US	mm	US	mm	US	mm	US	mm	US	mm	US	mm	US	mm
Roof/Roof	672-G01-050	2"	51	*	*	*	*	*	*	*	*	1"	25	1"	25
	672-G01-075	3"	76	*	*	*	*	*	*	*	*	1 1/2"	38	1 1/2"	38
	672-G01-100	4"	102	*	*	*	*	*	*	*	*	2"	51	2"	51
	672-G01-150	6"	152	*	*	*	*	*	*	*	*	3"	76	3"	76
	672-G01-200	8"	203	*	*	*	*	*	*	*	*	4"	102	4"	102
Roof/Wall	672-G02-050	2"	51	*	*	*	*	*	*	*	*	1"	25	1"	25
	672-G02-075	3"	76	*	*	*	*	*	*	*	*	1 1/2"	38	1 1/2"	38
	672-G02-100	4"	102	*	*	*	*	*	*	*	*	2"	51	2"	51
	672-G02-150	6"	152	*	*	*	*	*	*	*	*	3"	76	3"	76
	672-G02-200	8"	203	*	*	*	*	*	*	*	*	4"	102	4"	102

May be available in larger widths, please contact InPro Corporation for more details.

IPC.867/REV.12

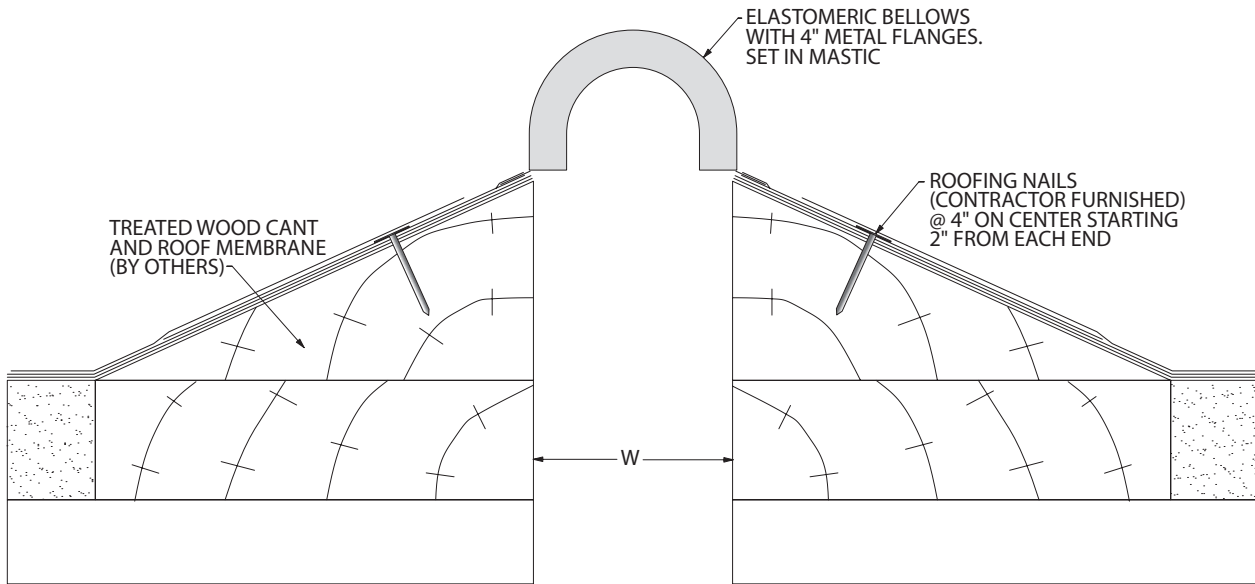
Inprocorp.com • 800.222.5556 • 262.679.9010
 World Headquarters S80 W18766 Apollo Drive, Muskego, WI 53150 USA

JOINTMASTER®
 EXPANSION JOINT SYSTEMS
 A DIVISION OF INPRO®

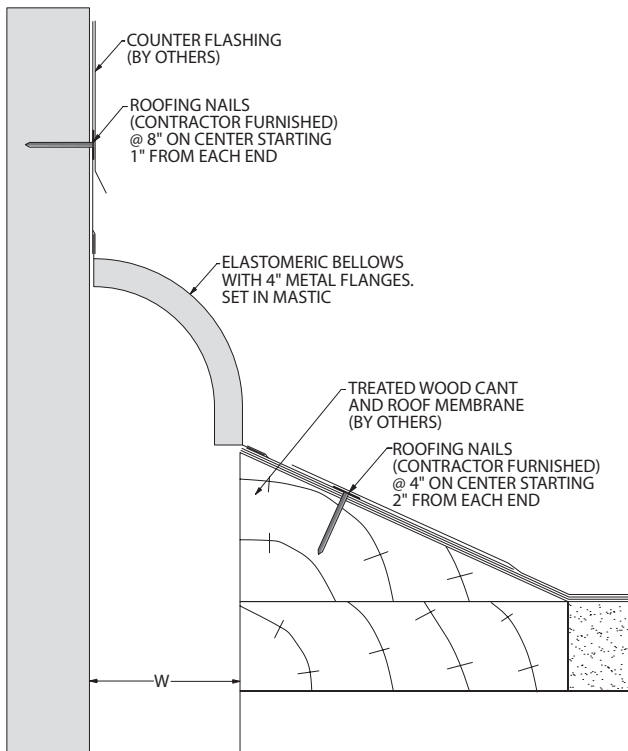
672 Series

Bellows Roof Systems

672-G01 Canted Roof/Roof
(2" (50mm) system shown)



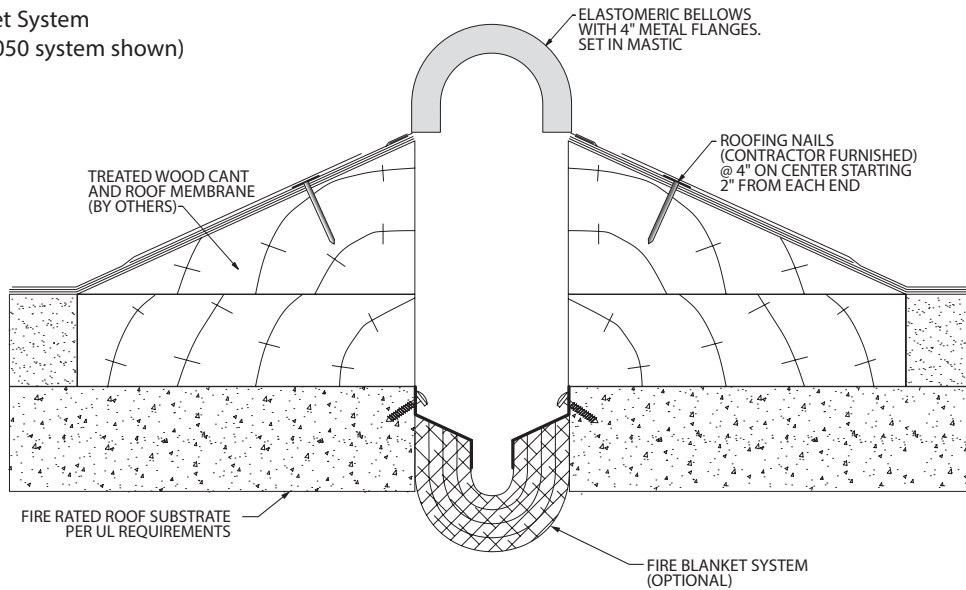
672-G02 Canted Roof/Wall
(2" (50mm) system shown)



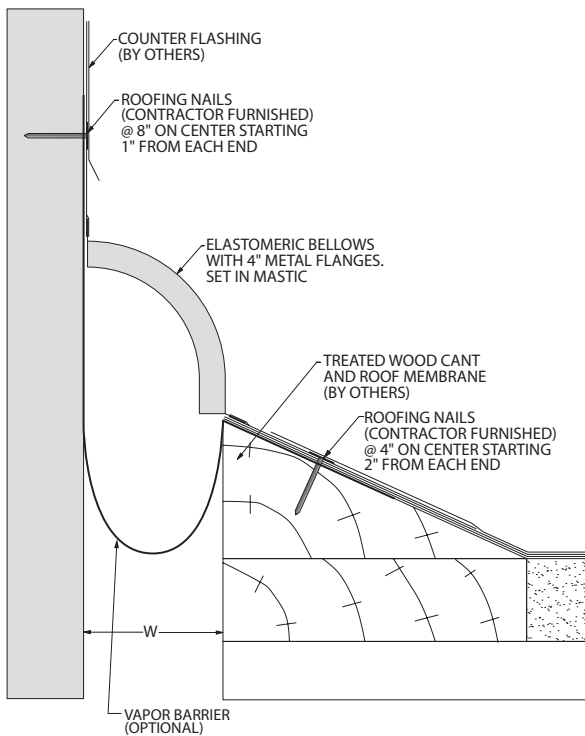
672 Series

Options

Fire Blanket System
(672-G01-050 system shown)



Vapor Barrier System
(672-G01-050 system shown)



Factory Preformed Intersections/Transitions
Consult factory for available configurations.

