

767 Series

A01 - Floor to Floor



Movement Rating ± 50%

Product
Guide



Seismic



Exterior



Interior



Heavy Duty



Fire Rated
Option



Vapor Barrier
Option



ADA

- ▶ Industry unique robust design for heavy duty applications.
- ▶ Tapered cover plate provides an ADA compliant low profile design that is self-leveling and allows for a seamless transition.
- ▶ Carpet and vinyl flooring can be secured under the cover plate for a reduced sightline, ideal for design scenarios where finish and strength are equally important.
- ▶ Frames provide additional fasteners suited for high traffic, heavy loading conditions.

Application	System	W		H1		H2		S		B		Movement +/-			
		Joint Width		Frame Height 1		Height 2		Sightline		Blockout		Horizontal		Vertical	
		US	mm	US	mm	US	mm	US	mm	US	mm	US	mm	US	mm
Floor to Floor	767-A01-100	4"	100	2"	51	*	*	13 1/2"	222	6 5/8"	102	2"	51	3/4"	152
	767-A01-150	6"	150	2"	51	*	*	15 1/2"	394	6 5/8"	206	3"	76	1 1/2"	178
	767-A01-200	8"	200	2"	51	*	*	17 1/2"	445	6 5/8"	206	4"	102	2"	203

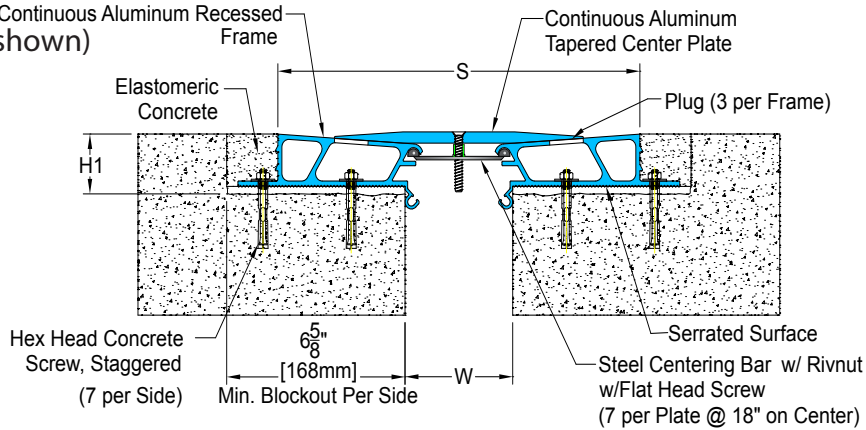
*Contact your InPro Representative for loading capabilities

IPC.1338/REV.8

767 Series

Heavy Duty Seismic Floor Systems

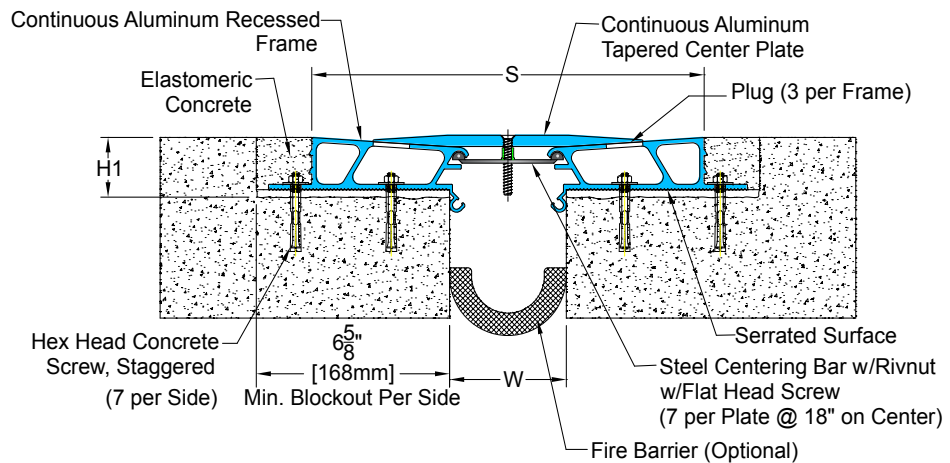
767-A01 Floor/Floor Continuous Aluminum Recessed Frame (4" (100mm) system shown)



767 Series

Options

Fire Barrier System (767-A01-100 system shown)



Vapor Barrier (767-A01-100 system)

