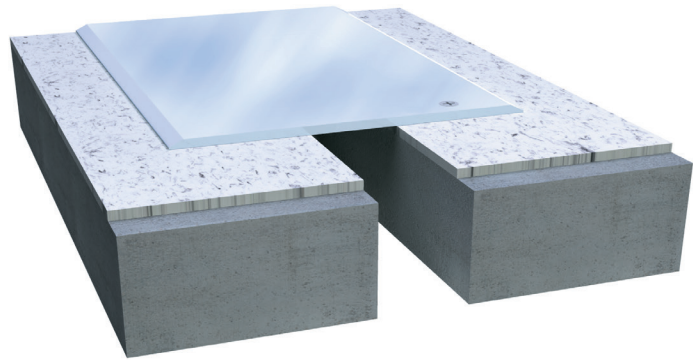


801 Series

A01 - Floor to Floor

A02 - Floor to Wall



Movement Rating $\pm 50\%$

Product Guide



Thermal



Exterior



Interior



Fire Rated
Option



Vapor Barrier
Option

- Designed with beveled edges for pedestrian safety
- Easy to install
- Economical solution for retrofit and surface mount installations
- Mill finish aluminum standard, brushed and anti-slip finishes also available
- Also available in stainless steel and brass
- Wider widths available

Application	System	W		H1		H2		S		B		Movement +/-			
		Joint Width		Frame Height 1		Height 2		Sightline		Blockout		Horizontal		Vertical	
		US	mm	US	mm	US	mm	US	mm	US	mm	US	mm	US	mm
Floor to Floor	801-A01-025	1"	25	1/8"	3	*	*	4 1/8"	105	*	*	1/2"	13	*	*
	801-A01-050	2"	51	1/8"	3	*	*	5 5/8"	143	*	*	1"	25	*	*
	801-A01-075	3"	76	1/4"	6	*	*	9 1/4"	235	*	*	1 1/2"	38	*	*
	801-A01-100	4"	102	1/4"	6	*	*	9 1/4"	235	*	*	2"	51	*	*
Floor to Wall	801-A02-025	1"	25	1/8"	3	*	*	2 9/16"	65	*	*	1/2"	13	*	*
	801-A02-050	2"	51	1/8"	3	*	*	3 13/16"	97	*	*	1"	25	*	*
	801-A02-075	3"	76	1/4"	6	*	*	7 1/2"	189	*	*	1 1/2"	38	*	*
	801-A02-100	4"	102	1/4"	6	*	*	7 1/2"	189	*	*	2"	51	*	*

Available in larger widths, please contact Inpro for more details.

IPC.879/REV.15

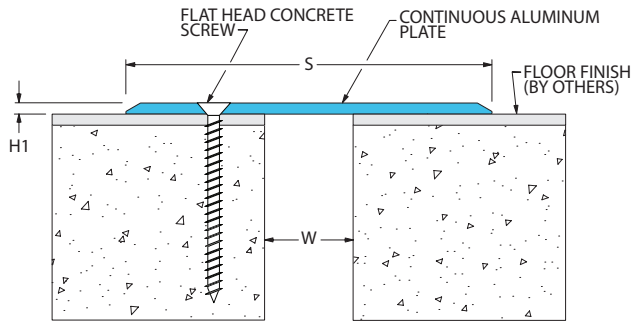
Inprocorp.com • 800.222.5556 • 262.679.9010
World Headquarters S80 W18766 Apollo Drive, Muskego, WI 53150 USA

JOINTMASTER®
EXPANSION JOINT SYSTEMS
A DIVISION OF INPRO®

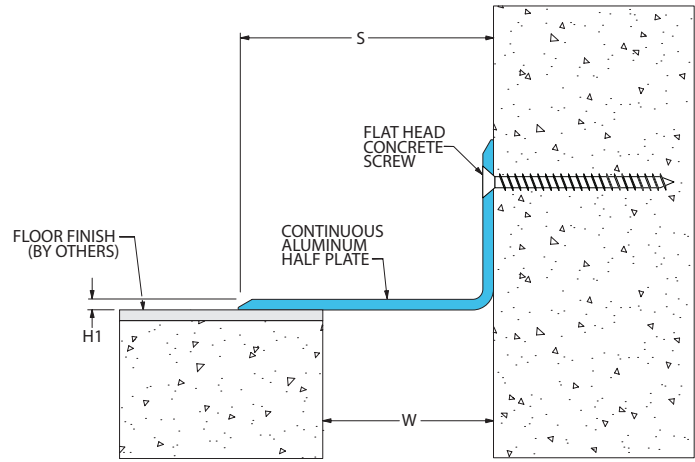
801 Series

Floor and Wall Systems

801-A01 Floor/Floor
(1" (25mm) system shown)

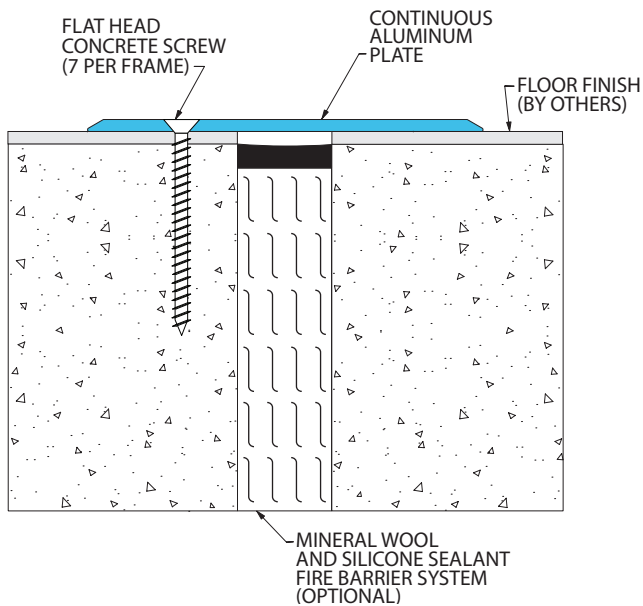


801-A02 Floor/Wall
(2" (50mm) system shown)



801 Series Options

801-A01 with Mineral Wool & Silicone System
(1" (25mm) system shown)



801-A01 With Vapor Barrier
(2" (50mm) system shown)

