

925-025 SYSTEM

RATED SUBSTRATE MUST BE IN COMPLIANCE WITH UL ASSEMBLY REQUIREMENTS (BY OTHERS)

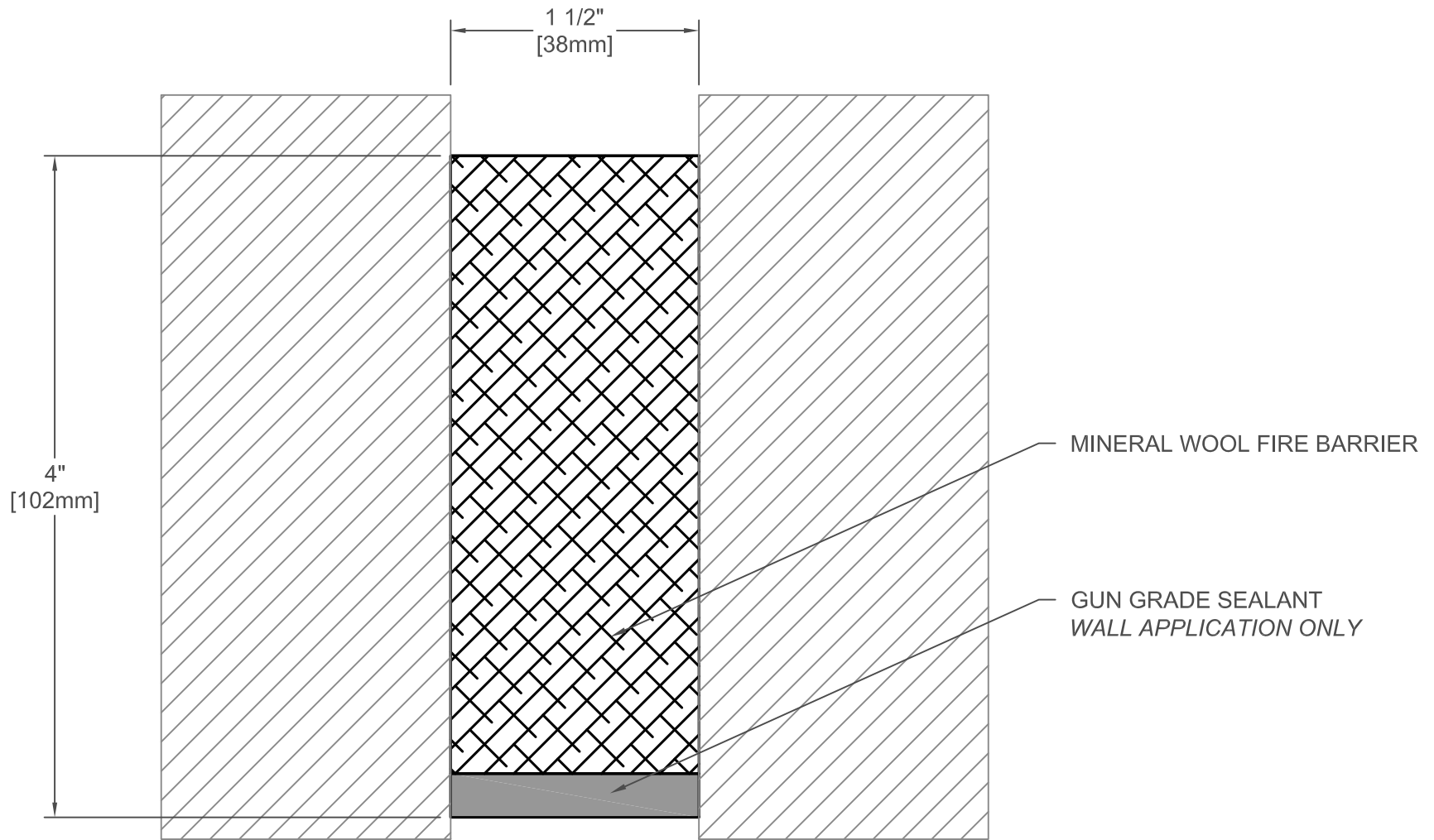
FINISH: N/A
PROJECT:
CUSTOMER:
LOCATION:

925 MINERAL WOOL
3 HR FIRE BARRIER
WALL TO WALL APPLICATION

DATE:	10/5/18
SCALE:	1:1
DOC:	CADJM.183/R2

inpro.

For More Information Visit: Inprocorp.com



925-038 SYSTEM

RATED SUBSTRATE MUST BE IN COMPLIANCE WITH UL ASSEMBLY REQUIREMENTS (BY OTHERS)

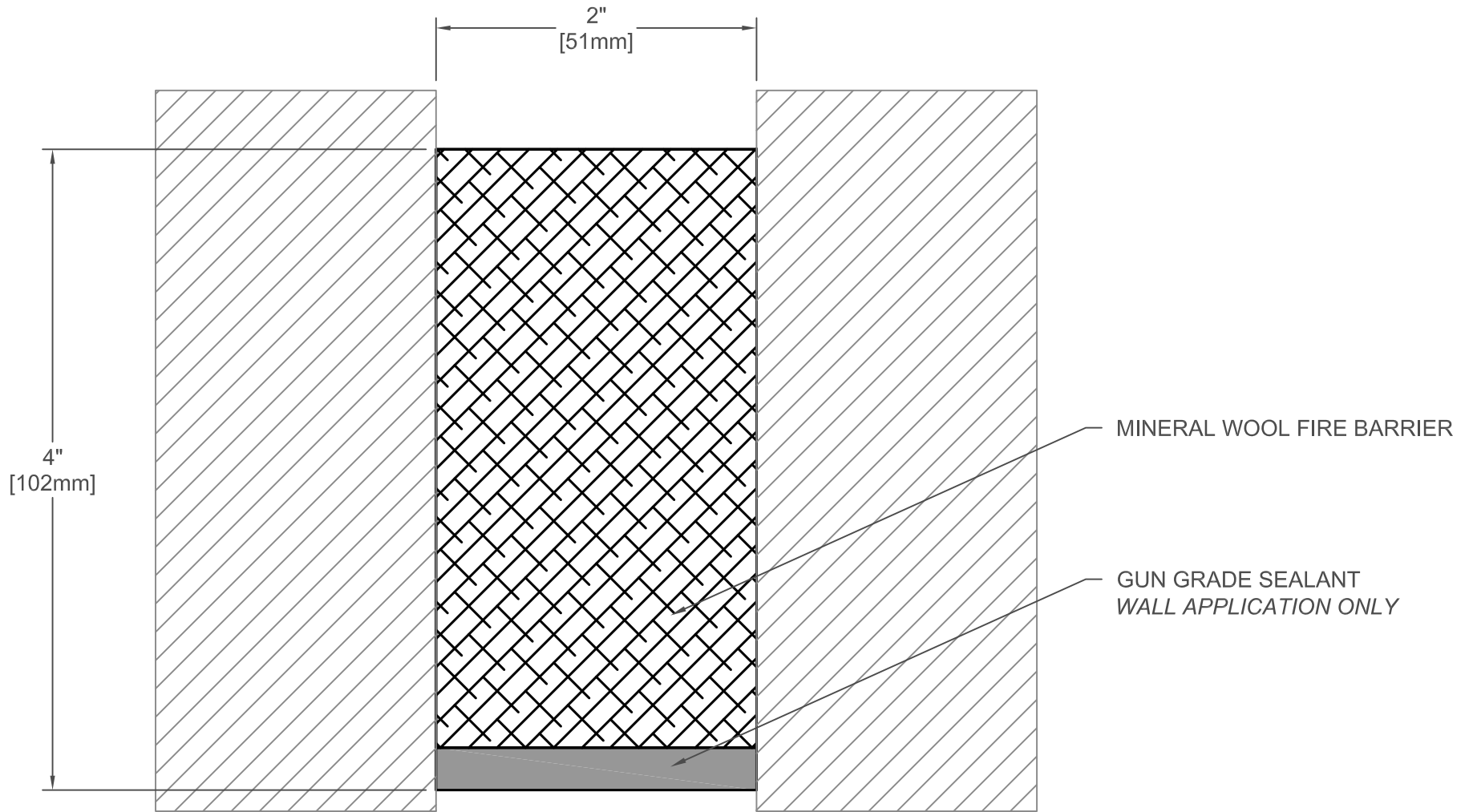
FINISH: N/A
PROJECT:
CUSTOMER:
LOCATION:

925 MINERAL WOOL
3 HR FIRE BARRIER
WALL TO WALL APPLICATION

DATE:	10/5/18
SCALE:	1:1
DOC:	CADJM.183/R2

inpro.

For More Information Visit: Inprocorp.com



925-050 SYSTEM

RATED SUBSTRATE MUST BE IN COMPLIANCE WITH UL ASSEMBLY REQUIREMENTS (BY OTHERS)

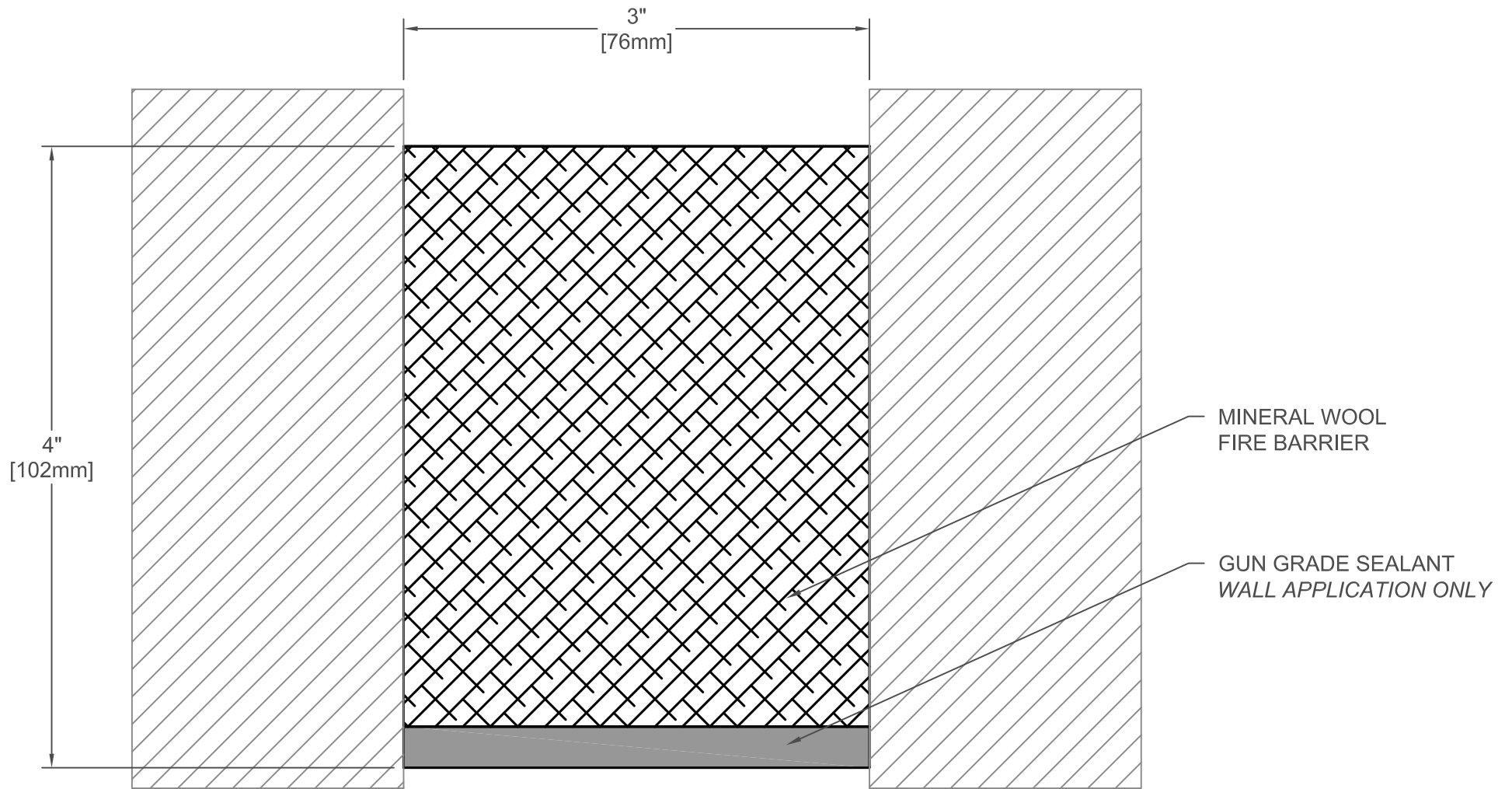
FINISH: N/A
PROJECT:
CUSTOMER:
LOCATION:

925 MINERAL WOOL
3 HR FIRE BARRIER
WALL TO WALL APPLICATION

DATE:	10/5/18
SCALE:	1:1
DOC:	CADJM.183/R2

inpro.

For More Information Visit: Inprocorp.com



925-075 SYSTEM

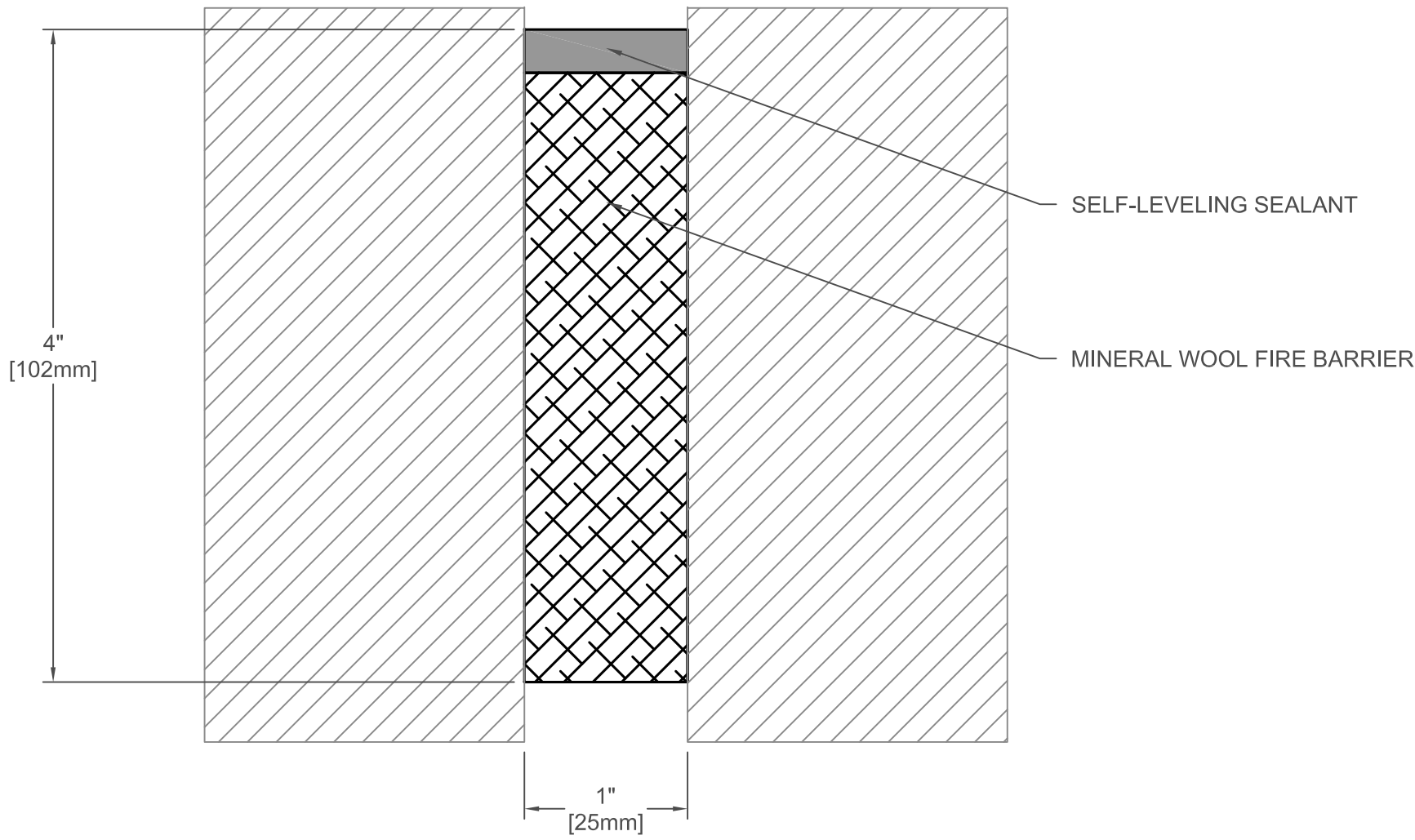
RATED SUBSTRATE MUST BE IN COMPLIANCE WITH UL ASSEMBLY REQUIREMENTS (BY OTHERS)

FINISH: N/A
PROJECT:
CUSTOMER:
LOCATION:

925 MINERAL WOOL
3 HR FIRE BARRIER
WALL TO WALL APPLICATION

DATE:	10/5/18
SCALE:	1:1
DOC:	CADJM.183/R2





925-025 SYSTEM

RATED SUBSTRATE MUST BE IN COMPLIANCE WITH UL ASSEMBLY REQUIREMENTS (BY OTHERS)

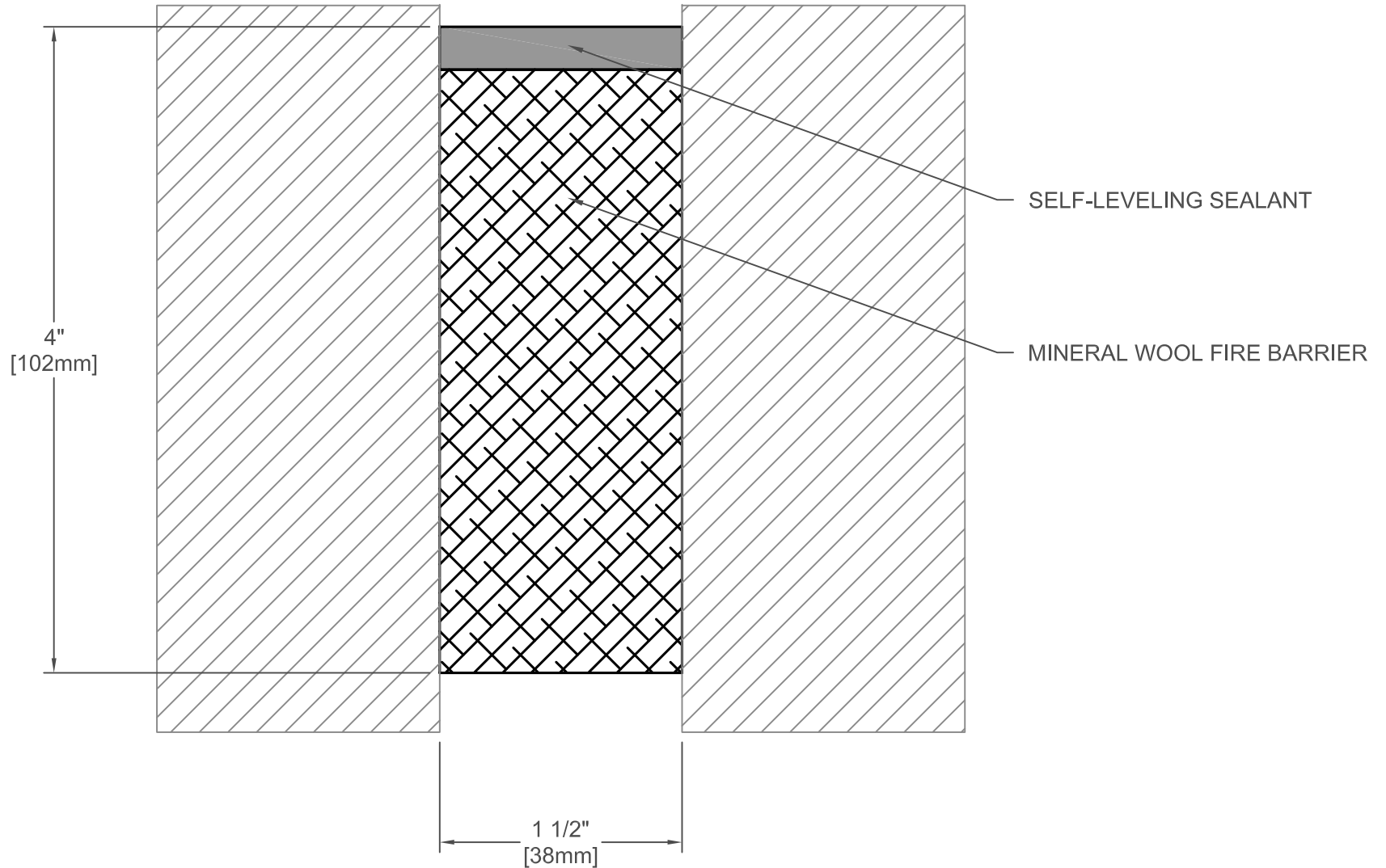
FINISH: N/A
PROJECT:
CUSTOMER:
LOCATION:

925 MINERAL WOOL
3 HR FIRE BARRIER
FLOOR TO FLOOR APPLICATION

DATE:	10/5/18
SCALE:	1:1
DOC:	CADJM.183/R2



For More Information Visit: Inprocorp.com



925-038 SYSTEM

RATED SUBSTRATE MUST BE IN COMPLIANCE WITH UL ASSEMBLY REQUIREMENTS (BY OTHERS)

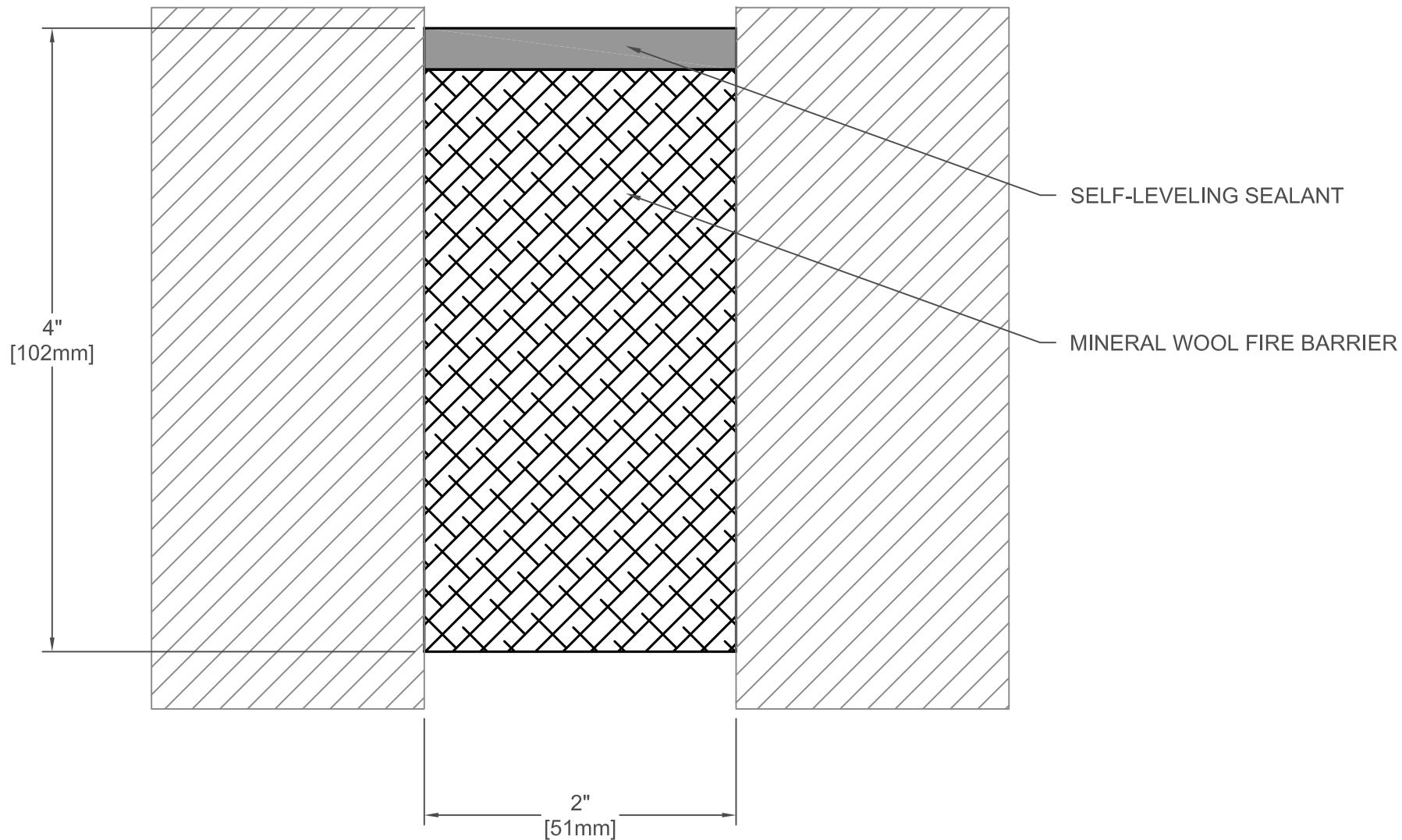
FINISH: N/A
PROJECT:
CUSTOMER:
LOCATION:

925 MINERAL WOOL
3 HR FIRE BARRIER
FLOOR TO FLOOR APPLICATION

DATE:	10/5/18
SCALE:	1:1
DOC:	CADJM.183/R2

inpro.

For More Information Visit: Inprocorp.com



925-050 SYSTEM

RATED SUBSTRATE MUST BE IN COMPLIANCE WITH UL ASSEMBLY REQUIREMENTS (BY OTHERS)

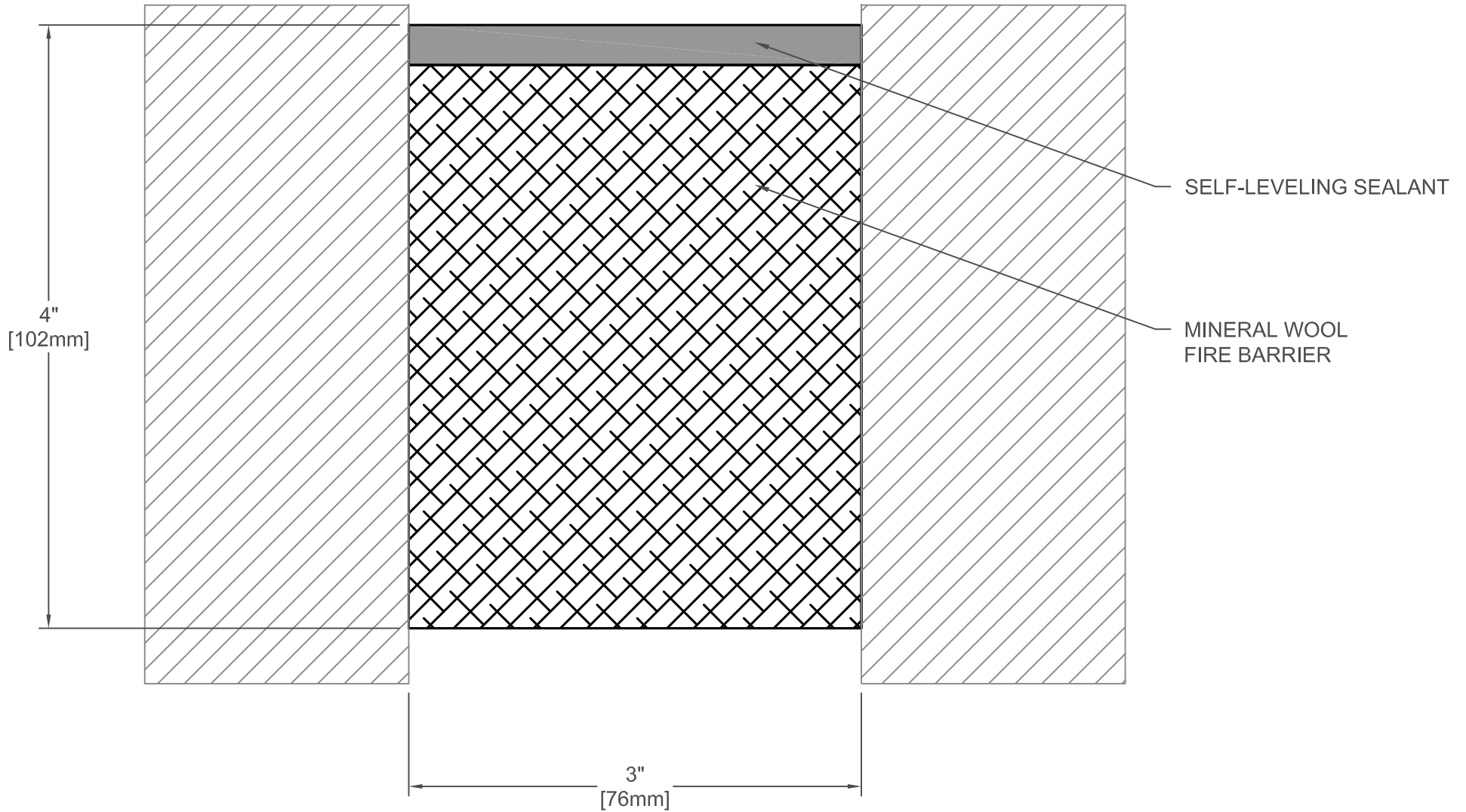
FINISH: N/A
PROJECT:
CUSTOMER:
LOCATION:

925 MINERAL WOOL
3 HR FIRE BARRIER
FLOOR TO FLOOR APPLICATION

DATE:	10/5/18
SCALE:	1:1
DOC:	CADJM.183/R2



For More Information Visit: Inprocorp.com



925-075 SYSTEM

RATED SUBSTRATE MUST BE IN COMPLIANCE WITH UL ASSEMBLY REQUIREMENTS (BY OTHERS)

FINISH: N/A
PROJECT:
CUSTOMER:
LOCATION:

925 MINERAL WOOL
3 HR FIRE BARRIER
FLOOR TO FLOOR APPLICATION

DATE:	10/5/18
SCALE:	1:1
DOC:	CADJM.183/R2

inpro.

For More Information Visit: Inprocorp.com