

# 935 Series

Fire Barrier System

Floors and Walls - Textiled wool & Sealant



**Movement Rating ±50%**

## Product Guide



Thermal



Exterior



Interior



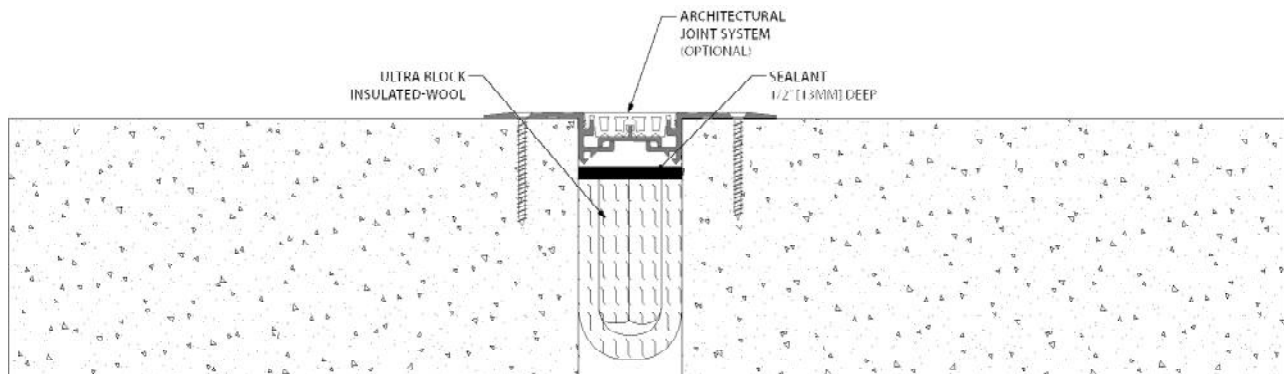
Fire Rated Option



Vapor Barrier Option

- ▶ Economical system for joint widths up to 5" [127mm]
- ▶ Offers greater movement than mineral wool and sealant fire barrier systems
- ▶ Fire barrier system is compliant with ASTM E119 and UL 2079
- ▶ The unique design of the 935 fire barrier allows for an easy installation, high resiliency and a uniform fill across the joint opening
- ▶ Fire resistant sealant stops smoke migration through the joint opening
- ▶ Available in 2,3 or 4 hour fire ratings, fire rating dependant on depth of material and width of joint opening
- ▶ Sealant provided in 20 oz [591 ml] tubes and 5 US gallon [18.92] pails

Application	System	Joint Width		Fire Rating	Movement %
		US	mm	Hours	
All Conditions	935-025	1"	25	2, 3, 4 hr.	50%
	935-050	2"	51	2,3,4 hr.	50%
	935-075	3"	76	2,3,4 hr.	50%
	935-100	4"	102	2 hr & 3 hr	50%
	935-125	5"	127	2 hr & 3 hr	25%



IPC.919/REV.6

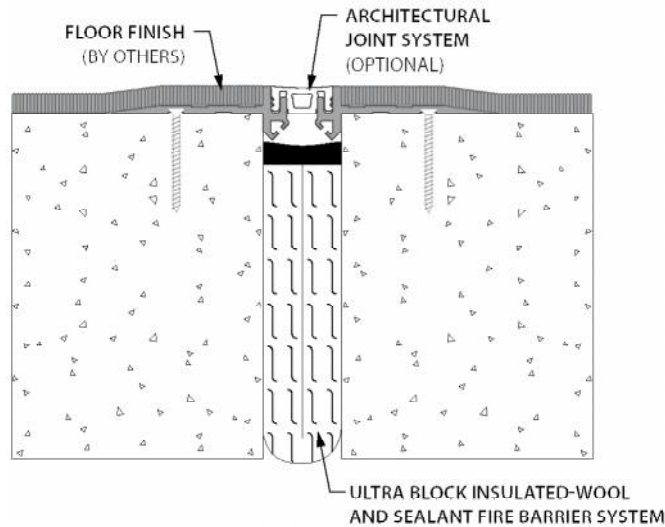
Inprocorp.com • 800.222.5556 • 262.679.9010  
 World Headquarters S80 W18766 Apollo Drive, Muskego, WI 53150 USA

**JOINTMASTER®**  
 EXPANSION JOINT SYSTEMS  
 A DIVISION OF INPRO®

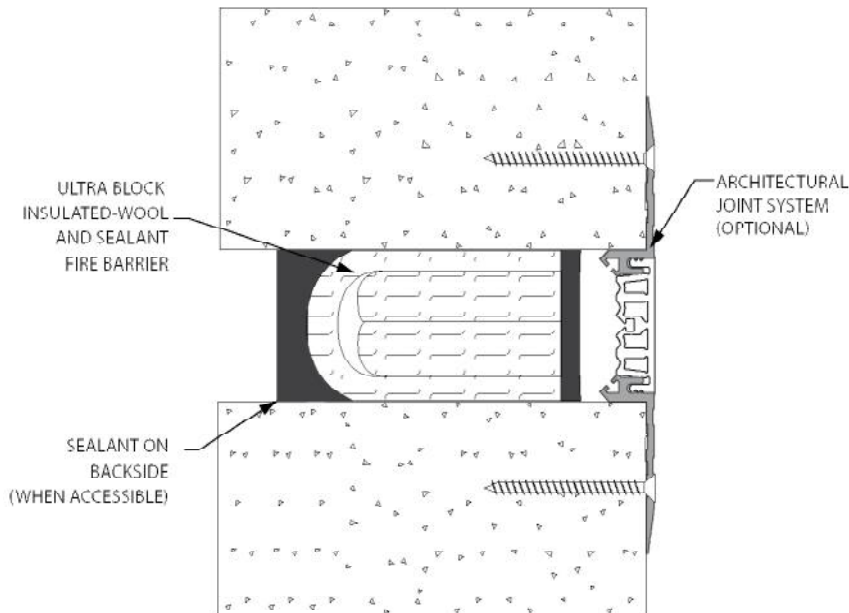
# 935 Series

## Fire Barrier System

### Ultra Block Wool & Sealant Fire Barrier System (1" (25mm) floor system shown)



### Ultra Block Wool & Sealant Fire Barrier System (2" (50mm) wall system shown)



Applications	Coverage: Installed 1/2" thick (13mm)	Joint Width: 1" (25mm)		Joint Width: 2" (50mm)		Joint Width: 3" (75mm)		Joint Width: 4" (100mm)		Joint Width: 5" (125mm)	
		LF	LM	LF	LM	LF	LM	LF	LM	LF	LM
Floor Conditions	20 oz. [591ml] Cartridge	5	1.5	3	.91	2	.61	1	.30	.5	.15
	5 US Gallon Pail	192.5	58.7	96.3	29.4	64.2	19.6	48.1	14.7	38.5	11.7
Wall Conditions	20 oz. [591ml] Cartridge	2.5	.76	1.5	.46	1	.30	.5	.15	.25	.08
	5 US Gallon Pail	96.3	29.3	48.1	14.6	32.1	9.78	24.1	7.34	19.3	5.9