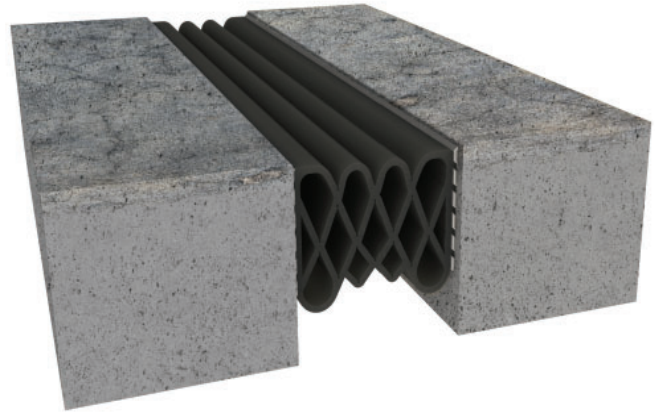


AR-S Series Compression Seal

AR-S - Architectural Applications



Movement Rating: ±50%

Product
Guide



- ▶ Heavy pedestrian / light duty vehicular loading capabilities
- ▶ Appropriate for horizontal & vertical applications where watertight conditions are required.
- ▶ Comprised of a tough synthetic rubber called "Santoprene": Superior movement while being highly resistant to UV degradation, extreme temperatures, and chemicals
- ▶ Heat weldable for watertight seams & transition points
- ▶ Industry unique profile ensures against waviness or bulging while addressing high load resistance
- ▶ Unique design incorporates ribs on side faces to aid in pooling epoxy and adding surface area for increased adhesion
- ▶ Profile engineered for improved ease of installation
- ▶ Color Seals available- Contact your Rep. for more information
- ▶ Lateral shear capable

Application	System	Nominal Joint Width Install Range		Thermal Maximum Joint Width		Seismic Maximum Joint Width		Lateral Shear Total Ability (±)		H1		H2	
										Seal Height		Installed Depth	
		US	mm	US	mm	US	mm	US	mm	US	mm	US	mm
Architectural Compression Seals	AR-100S	3/4"-1 1/4"	19-32	1 1/4"	32	1 1/2"	38	7/16"	11	2"	51	2 3/16"	56
	AR-200S	1 5/8"-2 3/8"	41-60	2 1/2"	64	3"	75	13/16"	21	2 3/16"	56	2 3/8"	60
	AR-300S	2 1/2"-3 3/8"	63-86	3 3/4"	95	4 1/2"	114	1 1/4"	32	3 5/16"	84	3 1/2"	89
	AR-400S	3 1/2"-4 3/8"	89-111	5"	127	6"	152	1 5/8"	41	3 5/16"	84	3 1/2"	89

* "Thermal Maximum Joint Width" column refers to anticipated annual joint fluctuation per industry standards. If joint increases beyond these parameters without reduction to the original specified joint width, per ASTM E1399, an engineering evaluation to determine revised movement needs is required.

IPC.888/REV.20

AR-S Series

Compression Seal Systems

AR - S Compression Seal
(2" (50mm) seal shown)

