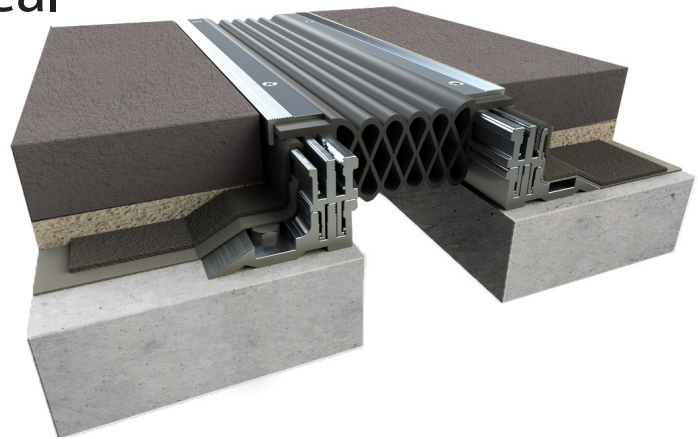


SR Series Compression Seal

SR - Exterior Applications



Movement Rating: ±50%

Product Guide



Thermal Exterior Seismic

- ▶ For use in Splitslab construction projects with deck waterproofing membranes.
- ▶ Application exterior building structures including Plazas, Greenroofs, Stadiums and Mass Transit projects where watertight conditions are required.
- ▶ Variable upstand heights available for a wide range of topping slab thicknesses. This eliminates the need to separately purchase galvanized steel angles.
- ▶ Slip resistant Aluminum or Stainless Steel cover plates can be added for high loads or pedestrian foot traffic
- ▶ Aluminum or Stainless Steel seal retaining caps also available.
- ▶ (2) counterflashing options available to ensure proper compatability with specified waterproofing measures (SBC Bituthene Polyester or Thermoplastic Flashing) - Contact Rep. for further details.

Seal Traits:

- ▶ Patented seal profile creates a crisp slight line with no linear waviness along with excellent load resistance.
- ▶ Comprised of Santoprene TPV Rubber: Superior movement while being highly resistant to UV degradation, extreme temperatures, and chemicals.
- ▶ Fully heat weldable for watertight seams and transitions.
- ▶ Seal available in black only.

Application	System	W		S		H1		Movement +/-	
		Joint Width		Sight Line		Seal Height			
		US	mm	US	mm	US	mm	US	mm
Floor to Floor	SR-200S	2"	51	4 11/16"	119	2 5/16"	59	1"	25
	SR-300S	3"	76	5 5/8"	143	2 3/8"	60	1 1/2"	38
	SR-400S	4"	102	6 11/16"	170	2 3/16"	56	2"	51

IPC.3042/REV.3

Inprocorp.com • 800.222.5556 • 262.679.9010

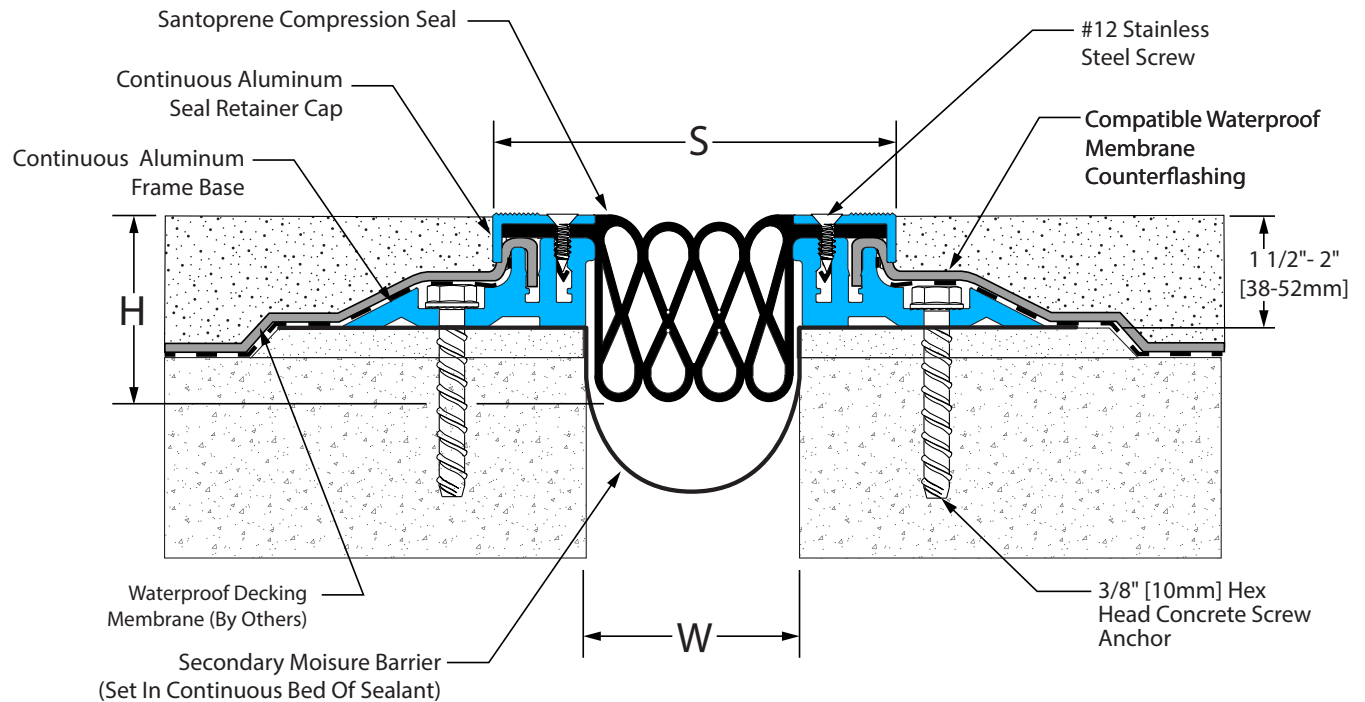
World Headquarters S80 W18766 Apollo Drive, Muskego, WI 53150 USA

JOINTMASTER®
EXPANSION JOINT SYSTEMS
A DIVISION OF INPRO®

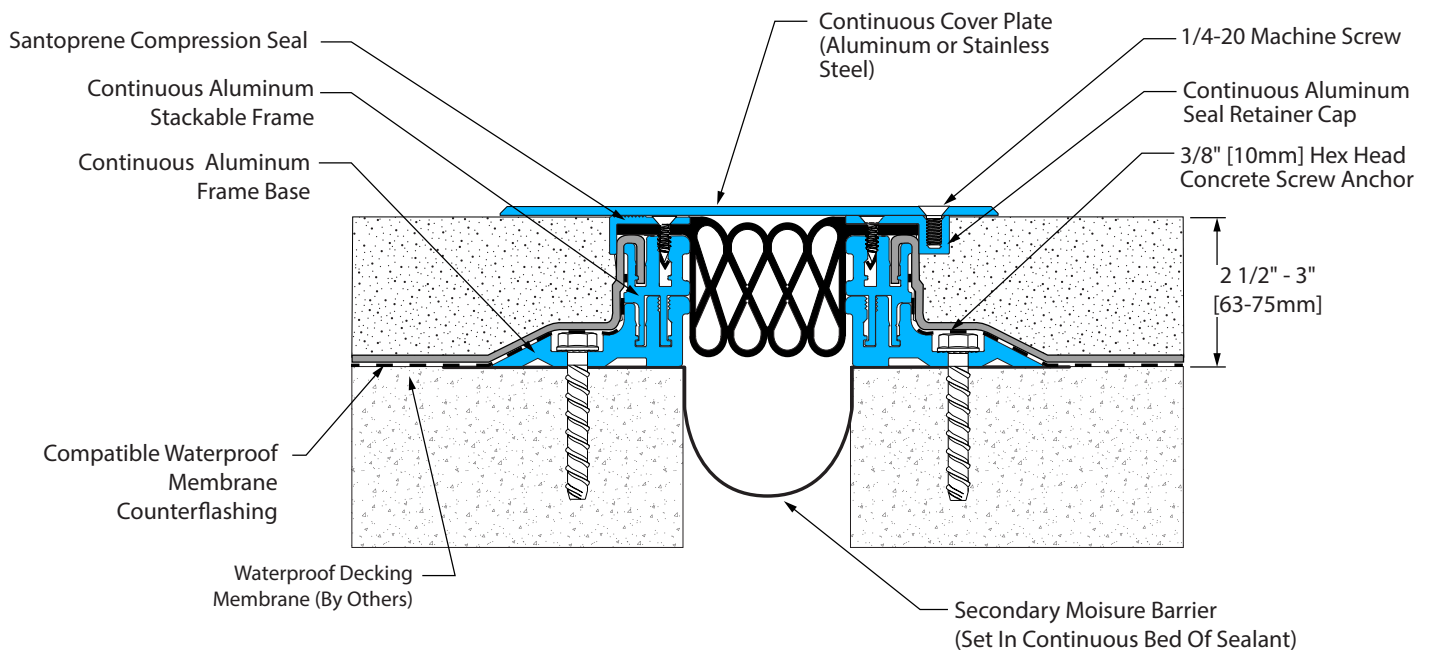
SR Series Compression Seal

SR - Exterior Applications

SR Compression Seal: Floor to Floor System (SR-300-38A System Shown)



SR Compression Seal: Floor to Floor System (SR-300A-63A System with Optional Cover Plate Shown)



Inprocorp.com • 800.222.5556 • 262.679.9010

World Headquarters S80 W18766 Apollo Drive, Muskego, WI 53150 USA

JOINTMASTER®

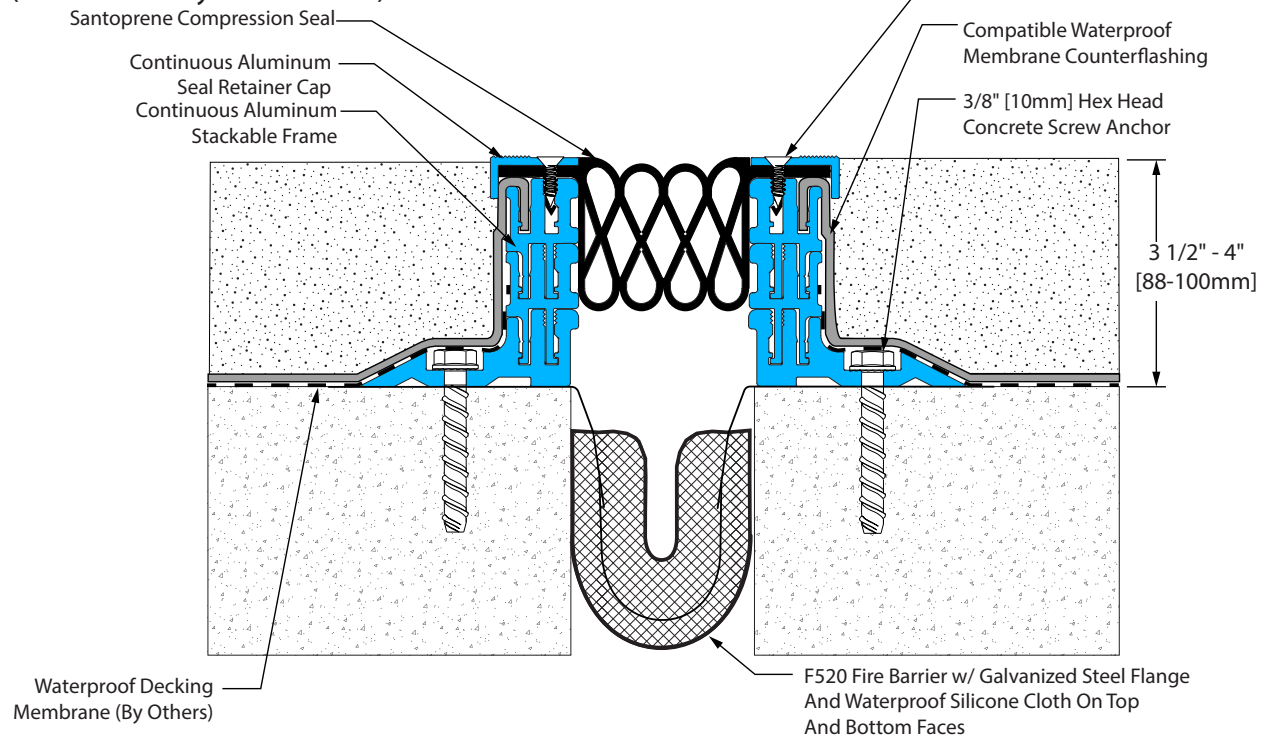
EXPANSION JOINT SYSTEMS
A DIVISION OF INPRO®

SR Series Compression Seal

SR - Exterior Applications

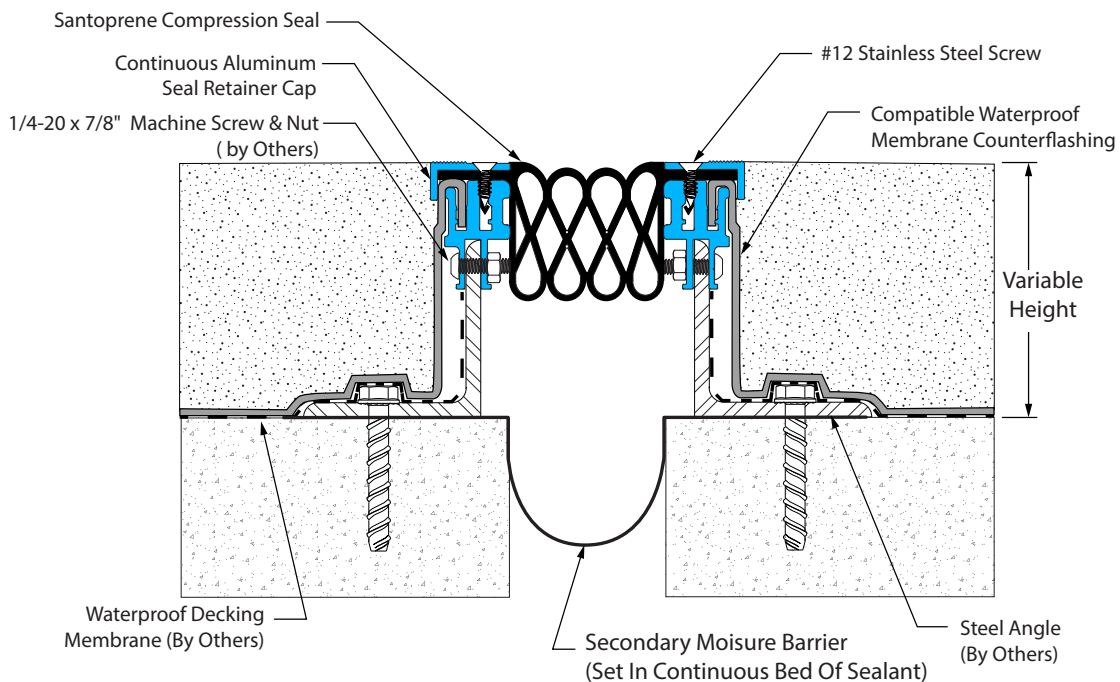
Fire Blanket System

(SR-300-88A System Shown)



Steel Angle System

(SR-300-38 System Shown)



Inprocorp.com • 800.222.5556 • 262.679.9010

World Headquarters S80 W18766 Apollo Drive, Muskego, WI 53150 USA

JOINTMASTER®

EXPANSION JOINT SYSTEMS
A DIVISION OF INPRO®