

BioPrism® Solid Surface

Installation Supplement for Wall Panels Over Tile or CMU

Please read all instructions before installing products.

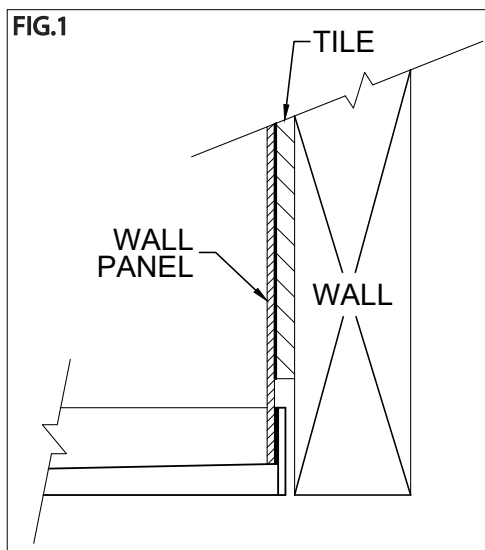
These instructions are intended as a supplement to the standard Wall Cladding and Shower Wall installation instructions, please see those instructions for more details.

1. Treat any mold/mildew with 3 parts water to 1 part household bleach mixture. Leave it on for 20 minutes and add more as it dries; wear eye and skin protection; rinse thoroughly.
2. Remove all dirt by scrubbing with detergent and warm water, rinse thoroughly, and then allow to dry.
3. Scrape out and widen any cracks; brush out all the dust. Seal the cracks with matching 100% acrylic or siliconized acrylic caulk, and smooth it flush while still wet. Make second application in several hours if needed. Check grouting and repair or re-grout as needed
4. **Tile Only** - To prepare a Tile wall for InPro® Boss 385 100% silicone, use a belt sander with 24 or 36 grit sandpaper and "burnish" a 2" x 2" area on the tile, approximately every 8"-10" square over the entire surface of the wall until you remove the glazed surface, or until a coarse texture exists.
5. Place quarter-coin sized drops of Boss 385 100% silicone every 8"-10" on the wall (the burnished areas for tile) and install the panels. See the Wall Cladding or Shower Wall installation instructions for more details.

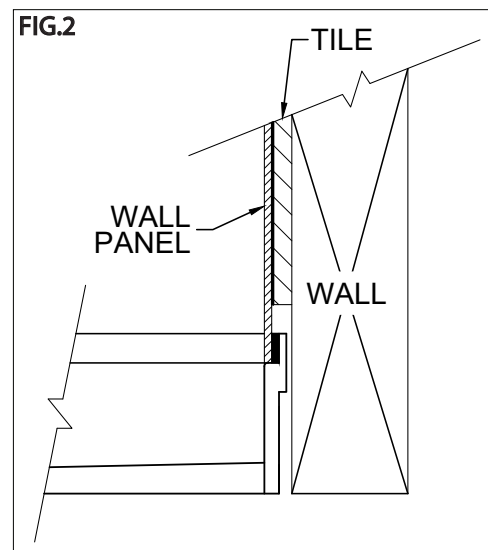
Installing Wall Panels Over Tile along with a BioPrism Shower Receptor

When installing wall panels over tile along with a shower receptor, you have two options to ensure proper wall cladding alignment:

Option 1: Chip out the lower portion of tile to form a void at the bottom of the wall. The water barrier/flange will be recessed into this void to ensure proper wall cladding alignment. See the Shower Wall & Shower Receptor installation instructions for more details.



SINGLE WATER BARRIER



DOUBLE WATER BARRIER

IPC.1334/REV.5

ENDURANT® Washroom Systems

inpro.com • 800.222.5556 • 262.679.9010

World Headquarters S80 W18766 Apollo Drive, Muskego, WI 53150 USA

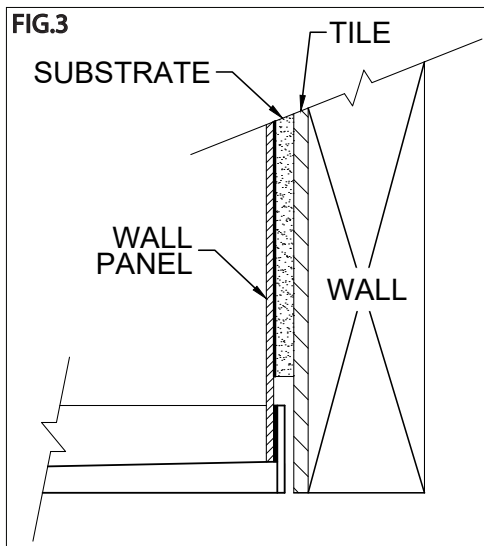
Installation Hotline: 866.394.6776

inpro®

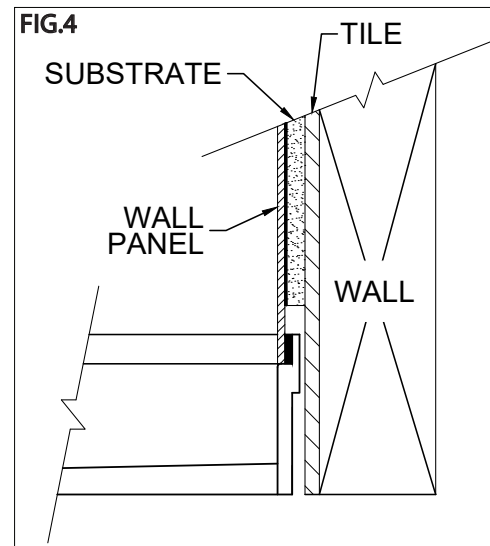
BioPrism® Solid Surface

Installation Supplement for Wall Panels Over Tile or CMU

Option 2: Install a substrate on top of the tile to create a void at the bottom of the wall. The water barrier/flange will be recessed into this void to ensure proper wall cladding alignment. See the Shower Wall & Shower Receptor installation instructions for more details.



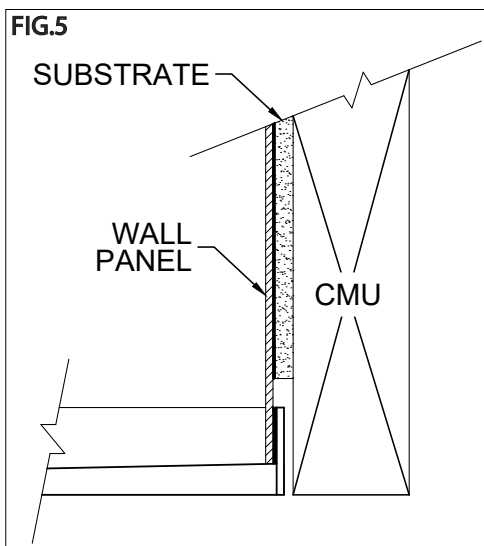
SINGLE WATER BARRIER



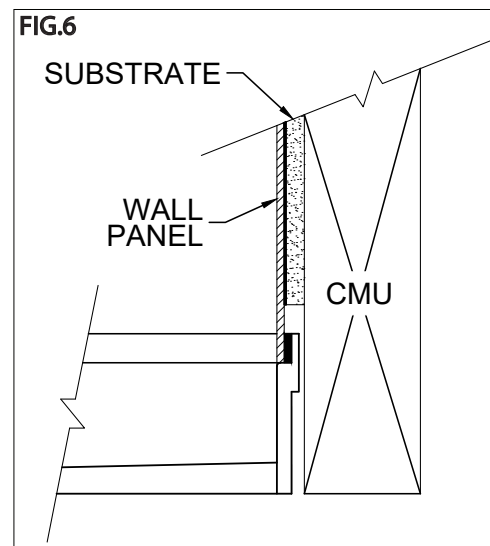
DOUBLE WATER BARRIER

Installing Wall Panels Over CMU along with a BioPrism Shower Receptor

When installing wall cladding over CMU along with a shower receptor, install a substrate on top of the CMU to create a void at the bottom of the wall. The water barrier/flange will be recessed into this void to ensure proper wall cladding alignment. See the Shower Wall & Shower Receptor installation instructions for more details.



SINGLE WATER BARRIER



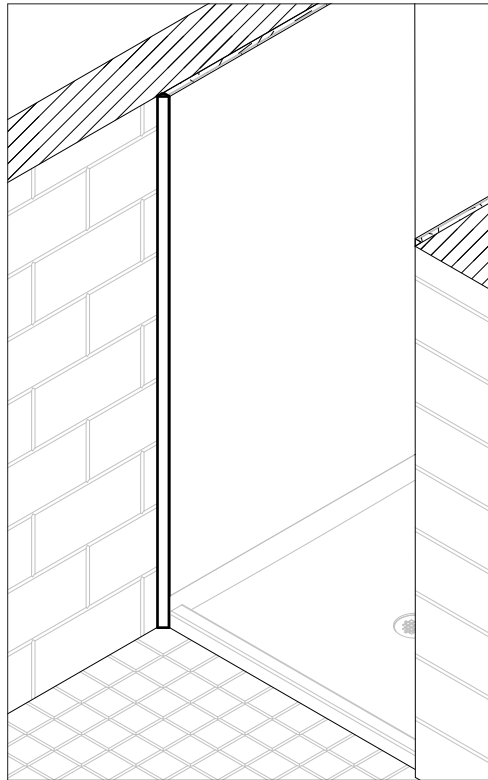
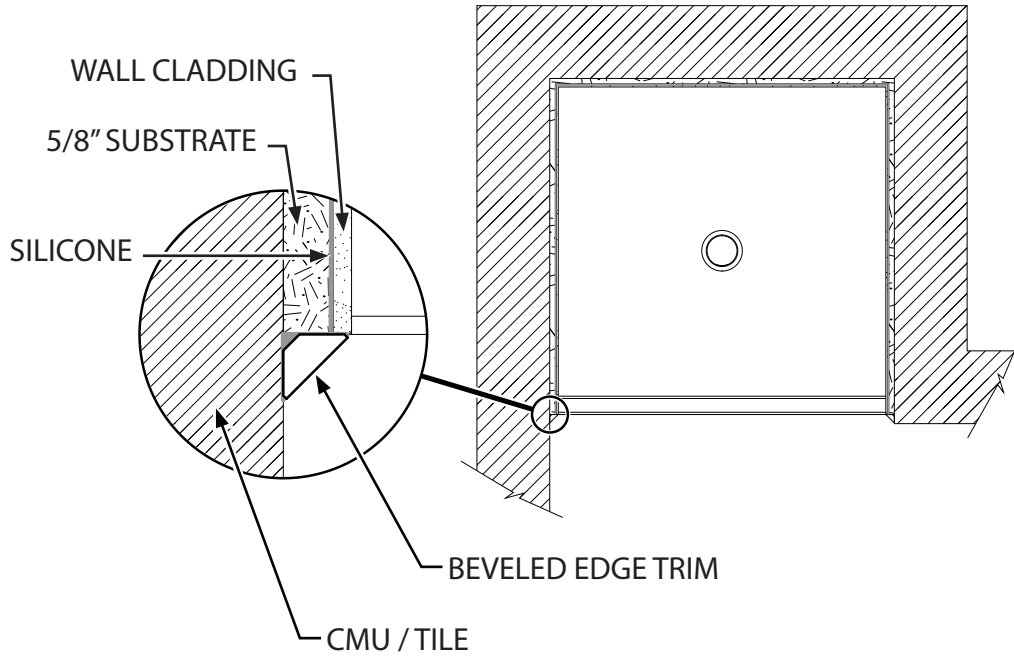
DOUBLE WATER BARRIER

BioPrism® Solid Surface

Installation Supplement for Wall Panels Over Tile or CMU

Beveled Edge Trim:

Beveled Edge Trim (ENCMU096) is recommended to be used to cover the transition between the CMU/TILE and the 1/4" BioPrism® wall cladding, when installed with a 5/8" substrate.



ENDURANT® Washroom Systems

inpro.com • 800.222.5556 • 262.679.9010

World Headquarters S80 W18766 Apollo Drive, Muskego, WI 53150 USA

Installation Hotline: 866.394.6776

inpro®