

Project Profile

St. Vincent de Paul Family Resource Center.

Phoenix, AZ



[REQUEST A QUOTE](#)

[REQUEST A REP](#)

Architectural Products

inpro®

Project Profile

Architect: Vehr/Webb
Studio Phoenix

Interior Design: Studio4Design
Phoenix

Contractor: Ryan Companies
Phoenix

The Project

The new \$16M, 40,000 sq. ft. Family Resource Center expands housing capacity for the elderly, the disabled, and homeless families. The new facility also includes expanded, dedicated space for health screening, job-readiness services, a computer lab and a food pantry.

Inpro® Products Used

Door + Wall Protection

[VIEW PRODUCTS](#)

Extensive installation of interior protection products, including Ricochet® Flexible Wall Protection, Nu-Tree® Wall Guards and Palladium® Wall Panels

Architectural Signage

[VIEW PRODUCTS](#)

Boston™ Collection in Taupe Photopolymer

Washroom Systems

[VIEW PRODUCTS](#)

27 commercial showers with Solid Surface Shower Walls and Solid Surface Front Trench Drain Shower Bases

Cubical Curtain + Track

[VIEW PRODUCTS](#)

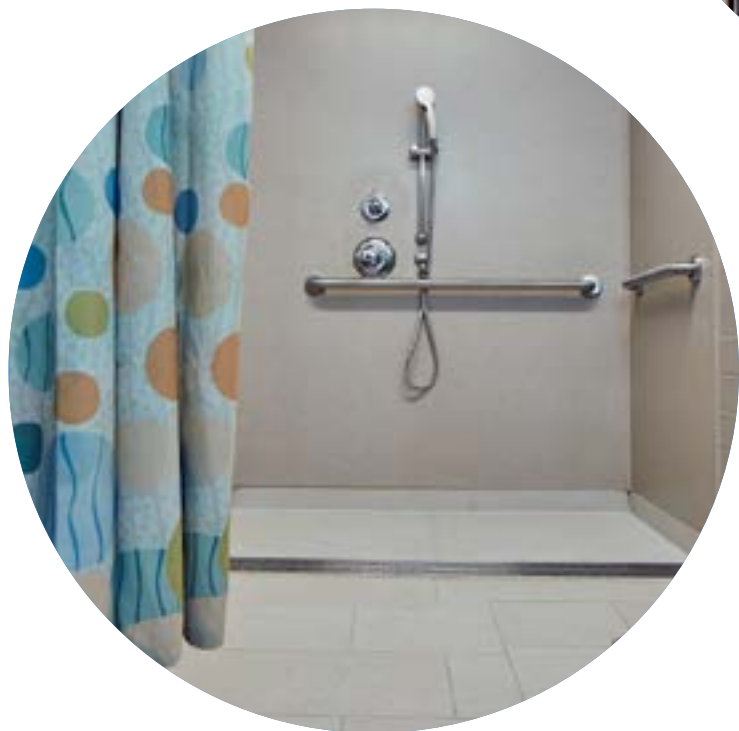
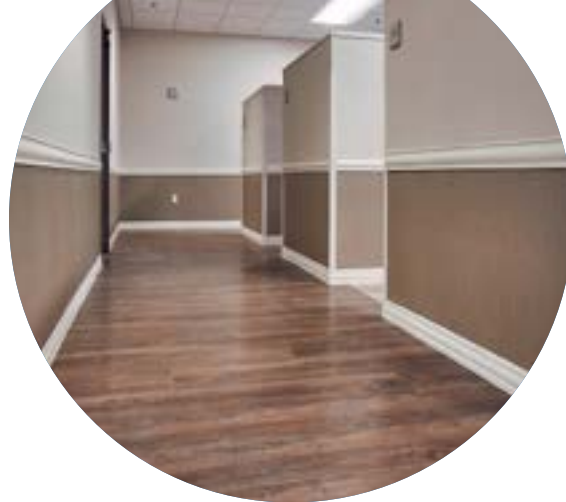
Shield by Panaz® Shower Curtains* hung from Optitrac® Cubicle Track

Commercial Window Treatments

[VIEW PRODUCTS](#)

Cordless Manual Window Shades

*Recommended to use with a liner when used as a shower curtain.





obsessed with protecting buildings®

How they look. How they function.
And how they protect the health and safety
of the people who use them every day.

That's why we make hundreds of architectural
products all under one roof and work tirelessly to
make sure you and your buildings succeed.

Yeah, we are obsessed. But we wouldn't
have it any other way.

inpro.com

800.222.5556

World Headquarters
580 W18766 Apollo Drive
Muskego, WI 53150 USA

IPC® Door + Wall Protection
Ascend® Elevator Interiors
WT Shade® Commercial Window Treatments
Clickeze® Privacy Systems
Endurant® Washroom Systems
SignScape® Architectural Signage
JointMaster® Expansion Joint Systems

©2023 Inpro Corporation

